

**Cedar Rapids**

200 Fifth Avenue SE Ste. 201
Cedar Rapids, Iowa 52401
(319) 363-6018

Des Moines

100 Court Avenue Ste. 100
Des Moines, Iowa 50309
(515) 309-0722

Iowa City

24 ½ S. Clinton Street
Iowa City, Iowa 52240
(319) 363-6018

Madison

301 N. Broom Street Ste. 100
Madison, Wisconsin 53703
(608) 819-0260

opnarchitects.com

April 3, 2019

Shannon Bisgard, Superintendent, Linn-Mar Community School District, 2999 North 10th Street, Marion, Iowa 52302

RE: Bid Recommendation for Linn-Mar Intermediate Site Grading (18245000)

Shannon: We are pleased to report the results of bidding the Linn-Mar Intermediate Schools Site Grading in Marion. On Tuesday, April 2, we received two bids for the project. The low bidder on the project was Boomerang of Anamosa, Iowa. You can review the specifics of the bid results on the attached bid tab. Bids were below the estimated cost for the project.

After review of the bids, we recommend that the Linn-Mar Community School District accept the following bid for Site Grading, as outlined below:

General Contract:
Boomerang:

Base Bid	\$ 556,000.00
TOTAL	\$ 556,000.00

In addition to the bid amounts, there are three unit prices listed on the bid tab. These unit prices deal with soils on the site, and will be defined in the contract to be used if specific situations arise where they become applicable.

Upon direction from the board, OPN will prepare a letter to proceed for Boomerang. We will also prepare contracts between the district and Boomerang.

Thank you for the opportunity to serve the Linn-Mar Community School District.

OPN ARCHITECTS, INC.

A handwritten signature in black ink, appearing to read 'Roger Worm'.

Roger Worm, AIA
Principal
Attachments: Bid Tabulations

cc: J.T. Anderson, Chief Financial/Operating Officer, Linn-Mar Community School District

PRINTED: 3/29/2019 6:55:57 PM

LINN-MAR INTERMEDIATE SCHOOL

90% REVIEW SET - ECHO HILL AND 35TH AVE

MARION, IA 52302

OPN ARCHITECTS
 200 5th Ave. SE, Suite 201
 Cedar Rapids, IA 52401
 P: 319-363-6018
 F: 319-363-7349
 www.opnarchitects.com
All reports, plans, specifications, contracts, forms, field data, notes and other documents and instruments prepared by OPN Architects, Inc. are instruments of service that remain the property of OPN Architects, Inc. OPN Architects, Inc. shall retain all common law, statutory and other reserved rights, including the copyright therein.
 © 2017 OPN Architects, Inc.

LOCATION MAP - ECHO HILL



LOCATION MAP - 35TH AVE



VOLUME 1

G001 COVER SHEET

CIVIL DRAWINGS - ECHO HILL

- C100. EXISTING TOPOGRAPHICAL SURVEY AND DEMOLITION PLAN
- C200. SITE LAYOUT PLAN
- C300. SITE UTILITY PLAN
- C400. SITE GRADING AND EROSION CONTROL PLAN
- C500. SITE GRADING PAVING PLAN
- C600. SITE SECONDARY FIRE ACCESS ROAD
- C700. SITE CONSTRUCTION NOTES AND DETAILS

CIVIL DRAWINGS - 35TH AVE

- C000. EXISTING TOPOGRAPHICAL SURVEY AND DEMOLITION PLAN
- C100. SITE LAYOUT PLAN
- C200. SITE UTILITY PLAN
- C300. SITE GRADING AND EROSION CONTROL PLAN
- C400. SITE PAVING PLAN
- C500. CONSTRUCTION NOTES AND DETAILS

LANDSCAPE DRAWINGS - ECHO HILL

- L101. OVERALL SITE PLAN
- L151. SITE PLAN ENLARGEMENTS
- L152. SITE PLAN ENLARGEMENTS
- L301. SITE DETAILS

LANDSCAPE DRAWINGS - 35TH AVE

- L101. OVERALL SITE PLAN
- L151. SITE PLAN ENLARGEMENTS
- L152. SITE PLAN ENLARGEMENTS
- L301. SITE DETAILS

STRUCTURAL DRAWINGS

- S001. STRUCTURAL NOTES & GENERAL INFORMATION
- S101. LEVEL 1 STRUCTURAL PLAN - AREA A
- S102. LEVEL 1 STRUCTURAL PLAN - AREA B
- S103. LEVEL 1 STRUCTURAL PLAN - AREA C
- S104. LEVEL 2 STRUCTURAL PLAN - AREA A
- S105. LEVEL 2 STRUCTURAL PLAN - AREA B
- S106. LEVEL 2 STRUCTURAL PLAN - AREA C
- S107. LEVEL 3 STRUCTURAL PLAN - AREA A
- S108. LEVEL 3 STRUCTURAL PLAN - AREA B
- S109. LEVEL 3 STRUCTURAL PLAN - AREA C
- S301. EXTERIOR FRAMING ELEVATIONS
- S302. EXTERIOR FRAMING ELEVATIONS
- S303. EXTERIOR FRAMING ELEVATIONS
- S311. FRAMING SECTIONS
- S501. STRUCTURAL DETAILS
- S502. STRUCTURAL DETAILS
- S503. STRUCTURAL DETAILS
- S504. STRUCTURAL DETAILS
- S600. STRUCTURAL SCHEDULES, ANCHOR ROD AND BASE PLATE DETAILS

ARCHITECTURAL DRAWINGS

- AG001. LIFE SAFETY AND CODE SUMMARY - LEVEL 1
- AG002. LIFE SAFETY AND CODE SUMMARY - LEVEL 2
- AG003. GENERAL DRAWING INFORMATION
- AG004. EXTERIOR ASSEMBLIES
- AG005. INTERIOR WALL TYPES
- AG006. INTERIOR DOOR & WINDOW ELEVATIONS
- AG007. INTERIOR PRODUCT SPECIFICATIONS
- AG008. CASEWORK SECTIONS
- A001. OVERALL LEVEL 1 FLOOR PLAN
- A002. OVERALL LEVEL 2 FLOOR PLAN
- A101. EXTERIOR PARTIAL LEVEL 1 FLOOR PLAN
- A102. EXTERIOR PARTIAL LEVEL 1 FLOOR PLAN
- A103. EXTERIOR PARTIAL LEVEL 1 FLOOR PLAN
- A104. EXTERIOR PARTIAL LEVEL 2 FLOOR PLAN
- A105. EXTERIOR PARTIAL LEVEL 2 FLOOR PLAN
- A106. EXTERIOR PARTIAL LEVEL 2 FLOOR PLAN
- A111. ROOF PLAN
- A120. AXONS
- A121. EXTERIOR ELEVATIONS
- A122. EXTERIOR ELEVATIONS
- A123. EXTERIOR ELEVATIONS
- A131. BUILDING SECTIONS
- A132. EXTERIOR WALL SECTIONS
- A133. EXTERIOR WALL SECTIONS
- A134. EXTERIOR WALL SECTIONS
- A135. EXTERIOR WALL SECTIONS
- A141. EXTERIOR SECTION DETAILS
- A142. EXTERIOR SECTION DETAILS
- A143. EXTERIOR SECTION DETAILS
- A151. EXTERIOR PLAN DETAILS
- A152. EXTERIOR PLAN DETAILS
- A153. EXTERIOR PLAN DETAILS
- A160. GLAZING TYPES - 35TH AVE
- A161. GLAZING TYPES AND EXTERIOR DOOR SCHEDULE - 35TH AVE
- A162. GLAZING TYPES - ECHO HILL
- A163. GLAZING TYPES AND EXTERIOR DOOR SCHEDULE - ECHO HILL
- A171. PRECAST PANEL ELEVATIONS
- A172. PRECAST PANEL ELEVATIONS AND DETAILS
- A181. EXTERIOR CANOPY
- A201. LEVEL 1 FLOOR PLAN - AREA A
- A202. LEVEL 2 FLOOR PLAN - AREA A
- A203. ENLARGED FLOOR PLAN - GYM COURT LINES
- A221. LEVEL 1 REFLECTED CEILING PLAN - AREA A
- A222. LEVEL 2 REFLECTED CEILING PLAN - AREA A
- A231. LEVEL 1 FINISH FLOOR PLAN - AREA A
- A232. LEVEL 2 FINISH FLOOR PLAN - AREA A
- A233. INTERIOR ELEVATIONS - AREA A
- A234. INTERIOR ELEVATIONS - AREA A
- A235. INTERIOR ELEVATIONS - AREA A
- A250. STAIR PLANS, SECTIONS, & DETAILS - AREA A
- A301. LEVEL 1 FLOOR PLAN - AREA B
- A302. ENLARGED PLAN - FOODSERVICE

ARCHITECTURAL DRAWINGS

- A321. LEVEL 1 REFLECTED CEILING PLAN - AREA B
- A331. LEVEL 1 FINISH FLOOR PLAN - AREA B
- A332. INTERIOR ELEVATIONS - AREA B
- A342. SECTION & PLAN DETAILS - AREA B
- A401. LEVEL 1 FLOOR PLAN - AREA C
- A402. LEVEL 2 FLOOR PLAN - AREA C
- A421. LEVEL 1 REFLECTED CEILING PLAN - AREA C
- A422. LEVEL 2 REFLECTED CEILING PLAN - AREA C
- A431. LEVEL 1 FINISH FLOOR PLAN - AREA C
- A432. LEVEL 2 FINISH FLOOR PLAN - AREA C
- A433. INTERIOR ELEVATIONS - AREA C
- A434. INTERIOR ELEVATIONS - AREA C
- A435. INTERIOR ELEVATIONS - AREA C
- A440. WALL SECTIONS, SECTION DETAILS, AND PLAN DETAILS - AREA C
- A441. ELEVATOR SECTION & DETAILS - AREA C
- A450. STAIR PLANS, SECTIONS, & DETAILS - AREA C
- A451. STAIR PLANS, SECTIONS, & DETAILS - AREA C
- A501. LEVEL 1 FLOOR PLAN - AREA D
- A502. LEVEL 2 FLOOR PLAN - AREA D
- A521. LEVEL 1 REFLECTED CEILING PLAN - AREA D
- A522. LEVEL 2 REFLECTED CEILING PLAN - AREA D
- A531. LEVEL 1 FINISH FLOOR PLAN - AREA D
- A532. LEVEL 2 FINISH FLOOR PLAN - AREA D
- A533. INTERIOR ELEVATIONS - AREA D
- A534. INTERIOR ELEVATIONS - AREA D
- A535. ENLARGED CASEWORK PLANS & DETAILS - AREA D
- A540. WALL SECTIONS - AREA D
- A541. SECTION DETAILS - AREA D
- A542. PLAN DETAILS - AREA D
- A601. LEVEL 1 FLOOR PLAN - AREA E
- A602. LEVEL 2 FLOOR PLAN - AREA E
- A621. LEVEL 1 REFLECTED CEILING PLAN - AREA E
- A622. LEVEL 2 REFLECTED CEILING PLAN - AREA E
- A631. LEVEL 1 FINISH FLOOR PLAN - AREA E
- A632. LEVEL 2 FINISH FLOOR PLAN - AREA E
- A633. INTERIOR ELEVATIONS - AREA E
- A640. WALL SECTIONS, SECTION DETAILS, AND PLAN DETAILS
- A650. STAIR PLANS, SECTIONS, & DETAILS
- A701. LEVEL 1 FLOOR PLAN - AREA F
- A702. LEVEL 2 FLOOR PLAN - AREA F
- A721. LEVEL 1 REFLECTED CEILING PLAN - AREA F
- A722. LEVEL 2 REFLECTED CEILING PLAN - AREA F
- A731. LEVEL 1 FINISH FLOOR PLAN - AREA F

ARCHITECTURAL DRAWINGS

- FX001. LEVEL 1 FIRE SUPPRESSION ZONING PLAN
- FX002. LEVEL 2 FIRE SUPPRESSION ZONING PLAN
- FX101. LEVEL 1 FIRE SUPPRESSION PLAN - AREA A
- FX102. LEVEL 1 FIRE SUPPRESSION PLAN - AREA B
- FX103. LEVEL 1 FIRE SUPPRESSION PLAN - AREA C
- FX104. LEVEL 2 FIRE SUPPRESSION PLAN - AREA A
- FX105. LEVEL 2 FIRE SUPPRESSION PLAN - AREA B
- FX106. LEVEL 2 FIRE SUPPRESSION PLAN - AREA C
- FX500. FIRE SUPPRESSION SCHEDULES AND DETAILS

PLUMBING DRAWINGS

- P001. UNDERSLAB PLUMBING PLAN - AREA A - ECHO
- P002. UNDERSLAB PLUMBING PLAN - AREA B - ECHO
- P003. UNDERSLAB PLUMBING PLAN - AREA C - ECHO
- P004. UNDERSLAB PLUMBING PLAN - AREA A - 35TH AVE
- P005. UNDERSLAB PLUMBING PLAN - AREA B - 35TH AVE
- P006. UNDERSLAB PLUMBING PLAN - AREA C - 35TH AVE
- P101. OVERALL LEVEL 1 PLUMBING PLAN - AREA A
- P102. LEVEL 1 PLUMBING PLAN - AREA B
- P103. LEVEL 1 PLUMBING PLAN - AREA A
- P104. LEVEL 2 PLUMBING PLAN - AREA A
- P105. LEVEL 2 PLUMBING PLAN - AREA B
- P106. LEVEL 2 PLUMBING PLAN - AREA C
- P107. OVERALL ROOF PLUMBING PLAN
- P400. ENLARGED PLUMBING PLANS
- P401. ENLARGED PLUMBING PLANS
- P402. ENLARGED PLUMBING KITCHEN PLANS
- P410. PLUMBING SECTIONS
- P420. PLUMBING SUPPLY ISOMETRICS
- P421. PLUMBING SUPPLY ISOMETRICS
- P422. PLUMBING WASTE AND VENT ISOMETRICS
- P423. PLUMBING WASTE AND VENT ISOMETRICS
- P500. PLUMBING DETAILS
- P501. PLUMBING SCHEDULES

HVAC DRAWINGS

- H101. LEVEL 1 HVAC PIPING AND DIFFUSER PLAN - AREA A
- H102. LEVEL 1 HVAC PIPING AND DIFFUSER PLAN - AREA B
- H103. LEVEL 1 HVAC PIPING AND DIFFUSER PLAN - AREA C
- H104. LEVEL 2 HVAC PIPING AND DIFFUSER PLAN - AREA A
- H105. LEVEL 2 HVAC PIPING AND DIFFUSER PLAN - AREA B
- H106. LEVEL 2 HVAC PIPING AND DIFFUSER PLAN - AREA C
- H201. LEVEL 1 HVAC DUCTWORK PLAN - AREA A
- H202. LEVEL 1 HVAC DUCTWORK PLAN - AREA B
- H203. LEVEL 1 HVAC DUCTWORK PLAN - AREA C
- H204. LEVEL 2 HVAC DUCTWORK PLAN - AREA A
- H205. LEVEL 2 HVAC DUCTWORK PLAN - AREA B
- H206. LEVEL 2 HVAC DUCTWORK PLAN - AREA C
- H300. HVAC GROUND HEAT EXCHANGER PLAN - ECHO
- H301. HVAC GROUND HEAT EXCHANGER PLAN - 35TH
- H302. HVAC GROUND HEAT EXCHANGER DETAILS
- H400. HVAC ENLARGED PLANS
- H500. HVAC CONTROLS
- H501. HVAC CONTROLS
- H502. HVAC CONTROLS
- H510. HVAC PIPING SCHEMATICS
- H520. HVAC DETAILS
- H521. HVAC DETAILS
- H530. HVAC SCHEDULES
- H540. HVAC SCHEDULES, NOTES AND SYMBOLS

ELECTRICAL DRAWINGS

- E101. LEVEL 1 ELECTRICAL LIGHTING PLAN - AREA A
- E102. LEVEL 1 ELECTRICAL LIGHTING PLAN - AREA B
- E103. LEVEL 1 ELECTRICAL LIGHTING PLAN - AREA C
- E104. LEVEL 2 ELECTRICAL LIGHTING PLAN - AREA A
- E105. LEVEL 2 ELECTRICAL LIGHTING PLAN - AREA B
- E106. LEVEL 2 ELECTRICAL LIGHTING PLAN - AREA C
- E201. LEVEL 1 ELECTRICAL POWER PLAN - AREA A
- E202. LEVEL 1 ELECTRICAL POWER PLAN - AREA B
- E203. LEVEL 1 ELECTRICAL POWER PLAN - AREA C
- E204. LEVEL 2 ELECTRICAL POWER PLAN - AREA A
- E205. LEVEL 2 ELECTRICAL POWER PLAN - AREA B
- E206. LEVEL 2 ELECTRICAL POWER PLAN - AREA C
- E300. ELECTRICAL SITE PLAN - ECHO
- E301. ELECTRICAL SITE PLAN - 35TH
- E400. ELECTRICAL LEVEL 1 OVERALL PATHWAYS PLAN
- E401. ELECTRICAL LEVEL 2 OVERALL PATHWAYS PLAN
- E402. ELECTRICAL ENLARGED KITCHEN PLAN
- E403. ENLARGED TELECOM ROOMS
- E500. ELECTRICAL SCHEMATIC RISER INFORMATION
- E510. ELECTRICAL POWER SCHEDULES
- E511. ELECTRICAL POWER SCHEDULES
- E512. ELECTRICAL POWER SCHEDULES
- E513. ELECTRICAL POWER SCHEDULES
- E514. ELECTRICAL POWER SCHEDULES
- E515. ELECTRICAL POWER SCHEDULES
- E520. ELECTRICAL LIGHTING SCHEDULES AND CONTROLS
- E521. ELECTRICAL LIGHTING SCHEDULES AND CONTROLS
- E522. ELECTRICAL LIGHTING SCHEDULES AND CONTROLS
- E530. ELECTRICAL DETAILS
- E540. ELECTRICAL NOTES AND SYMBOLS

FIRE ALARM DRAWINGS

- FA101. LEVEL 1 FIRE ALARM PLAN - AREA A
- FA102. LEVEL 1 FIRE ALARM PLAN - AREA B
- FA103. LEVEL 1 FIRE ALARM PLAN - AREA C
- FA104. LEVEL 2 FIRE ALARM PLAN - AREA A
- FA105. LEVEL 2 FIRE ALARM PLAN - AREA B
- FA106. LEVEL 2 FIRE ALARM PLAN - AREA C
- FA500. FIRE ALARM SCHEDULES AND DETAILS

TELECOMMUNICATIONS DRAWINGS

- T101. LEVEL 1 TELECOM PLAN - AREA A
- T102. LEVEL 1 TELECOM PLAN - AREA B
- T103. LEVEL 1 TELECOM PLAN - AREA C
- T104. LEVEL 2 TELECOM PLAN - AREA A
- T105. LEVEL 2 TELECOM PLAN - AREA B
- T106. LEVEL 2 TELECOM PLAN - AREA C
- T400. ENLARGED TELECOM ROOM 362 PLANS
- T401. ENLARGED TELECOM ROOM 1211 PLANS
- T402. ENLARGED TELECOM ROOM 2203 PLANS
- T403. LEVEL 1 TELECOM OVERALL PLAN
- T404. LEVEL 2 TELECOM OVERALL PLAN
- T500. TELECOM SCHEMATICS
- T501. TELECOM SCHEMATICS
- T502. TELECOM SCHEMATICS
- T510. TELECOM SCHEDULES AND DETAILS

AUDIO VISUAL DRAWINGS

- TA101. LEVEL 1 AUDIO VISUAL PLAN - AREA A
- TA102. LEVEL 1 AUDIO VISUAL PLAN - AREA B
- TA103. LEVEL 1 AUDIO VISUAL PLAN - AREA C
- TA104. LEVEL 2 AUDIO VISUAL PLAN - AREA A
- TA105. LEVEL 2 AUDIO VISUAL PLAN - AREA B
- TA106. LEVEL 2 AUDIO VISUAL PLAN - AREA C
- TA500. AUDIO VISUAL SCHEMATICS
- TA510. AUDIO VISUAL SCHEDULES, NOTES, AND SYMBOLS

FOOD SERVICE DRAWINGS

- FS100. FOODSERVICE EQUIPMENT PLAN & SCHEDULE
- FS101. FOODSERVICE SPECIAL CONDITIONS PLAN
- FS102. FOODSERVICE ELEVATIONS
- FS103. FOODSERVICE ELEVATIONS
- FS200. FOODSERVICE PLUMBING ROUGH IN PLAN
- FS300. FOODSERVICE ELECTRICAL ROUGH IN PLAN
- FS400. FOODSERVICE MECHANICAL ROUGH IN PLAN

I hereby certify this engineering document was prepared by me or under my direct personal supervision and that I am a duly licensed professional engineer under the laws of the state of Iowa.

Signature: _____
Name: BRENT JACKMAN
 Iowa Registration No: 18193 Expiration Date: 12/31/2019
 Sheets covered by this seal: Listed As "Civil"

I hereby certify this engineering document was prepared by me or under my direct personal supervision and that I am a duly licensed professional engineer under the laws of the state of Iowa.

Signature: _____
Name: DAVID RASMUSSEN
 Iowa Registration No: Expiration Date: 12/31/2020
 Sheets covered by this seal: Listed As "Structural"

I hereby certify these plans and specifications were prepared by me or under my direct personal supervision and that I am a duly licensed professional architect under the laws of the state of Iowa.

Signature: _____
Name: ROGER WORM
 Iowa Registration No: 3658 Expiration Date: 09/30/2019
 Sheets covered by this seal: Listed As "Architectural, Landscape, Food Service"

I hereby certify this engineering document was prepared by me or under my direct personal supervision and that I am a duly licensed professional engineer under the laws of the state of Iowa.

Signature: _____
Name: KELLY HARRER
 Iowa Registration No: 17407 Expiration Date: 12/31/2020
 Sheets covered by this seal: Listed As "Mechanical, Plumbing, Fire Suppression, Electrical, & Fire Alarm"

Exhibit 703.1

PRELIMINARY. NOT FOR CONSTRUCTION.

Owner:
 LINN-MAR COMMUNITY SCHOOL DISTRICT
 2999 North Tenth Street
 Marion, IA 52302

Project:
 LINN-MAR INTERMEDIATE SCHOOL
 Echo Hill and 35th Ave
 Marion, Iowa 52302

Civil Engineer:
 Hall & Hall Engineers, Inc.
 1860 Boyson Rd.
 Hiawatha, IA 52233
 P: 319-362-9546

Structural Engineer:
 M2B Structural Engineers
 422 2nd Ave SE
 Cedar Rapids, IA 52401
 P: 319-364-0666

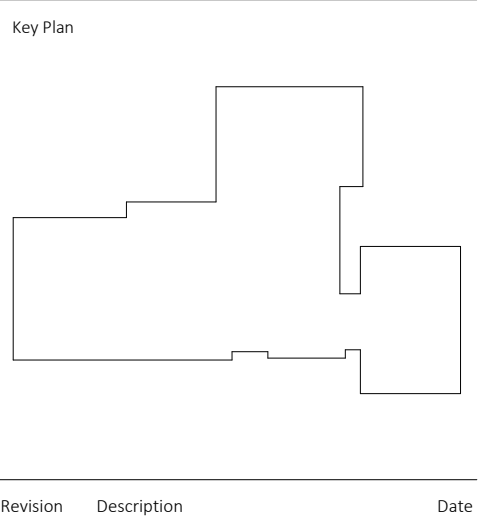
Mechanical Engineer:
 Design Engineers
 8801 Prairie View Ln. SW, Suite 200
 Cedar Rapids, IA 52404
 P: 319-841-1944

Electrical Engineer:
 Design Engineers
 8801 Prairie View Ln. SW, Suite 200
 Cedar Rapids, IA 52404
 P: 319-841-1944

Telecommunications Engineer:
 Design Engineers
 8801 Prairie View Ln. SW, Suite 200
 Cedar Rapids, IA 52404
 P: 319-841-1944

Fire Suppression Engineer:
 Design Engineers
 8801 Prairie View Ln. SW, Suite 200
 Cedar Rapids, IA 52404
 P: 319-841-1944

Food Service Consultant:
 Advanced Foodservice Consulting
 6201 South Gateway Dr.
 Marion, IA 52402
 P: 319-447-3515

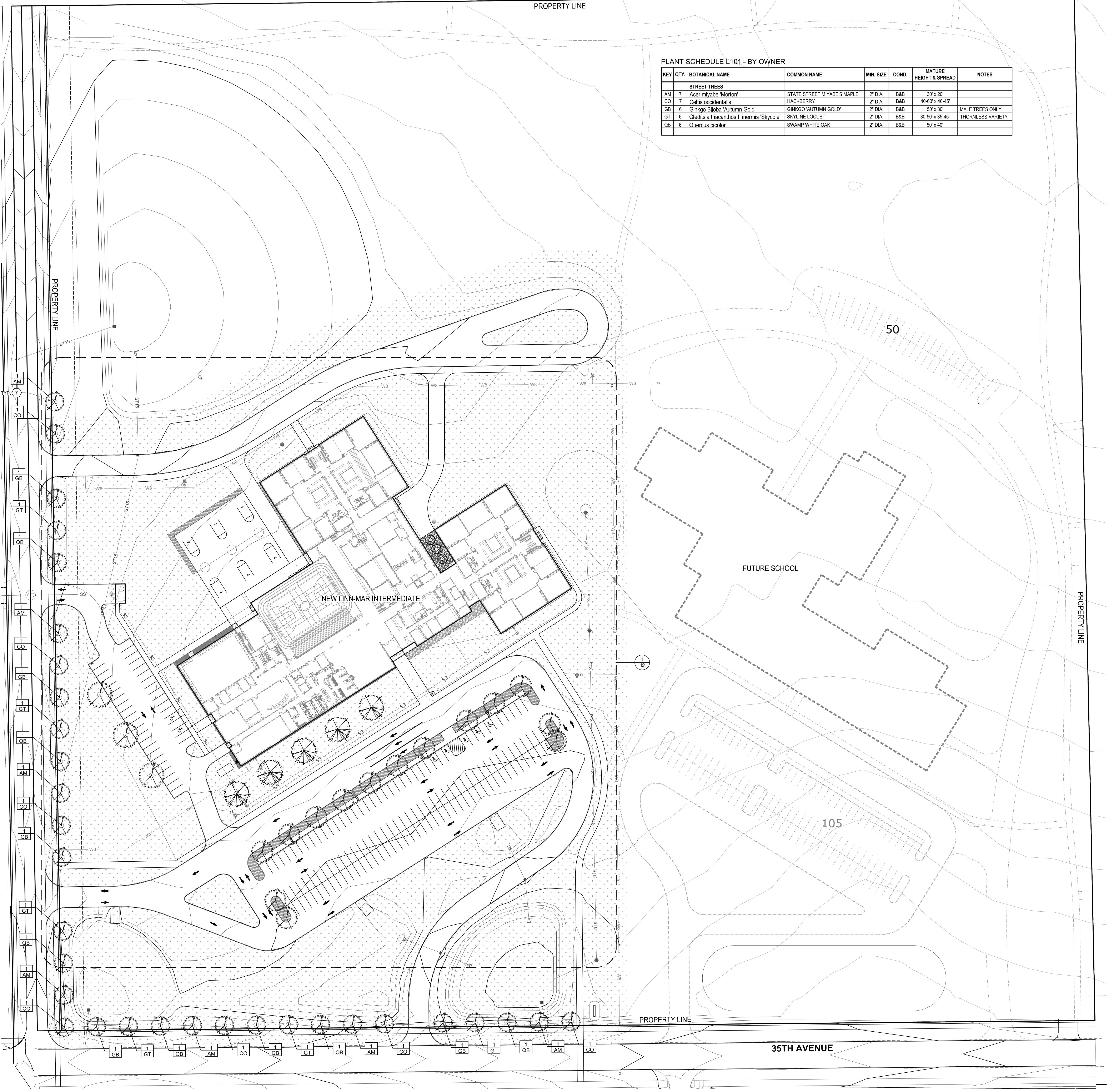


Revision	Description	Date

OPN Project No:
18245000
 Sheet Issue Date:
BID SET 04/11/2019
 Sheet Name:
COVER SHEET
 Sheet Number:
G001

PRINTED:

U
T
S
R
Q
P
N
M
L
K
J
H
G
F
E
D
C
B
A



PLANT SCHEDULE L101 - BY OWNER

KEY	QTY.	BOTANICAL NAME	COMMON NAME	MIN. SIZE	COND.	MATURE HEIGHT & SPREAD	NOTES
AM	7	Acer miyabe 'Morton'	STATE STREET MIYABE'S MAPLE	2" DIA.	B&B	30' x 20'	
CO	7	Celtis occidentalis	HACKBERRY	2" DIA.	B&B	40-60' x 40-45'	
GB	6	Ginkgo Biloba 'Autumn Gold'	GINKGO 'AUTUMN GOLD'	2" DIA.	B&B	50' x 30'	MALE TREES ONLY
GT	6	Gleditsia triacanthos f. inermis 'Skycole'	SKYLINE LOCUST	2" DIA.	B&B	30-50' x 35-45'	THORNLESS VARIETY
QB	6	Quercus bicolor	SWAMP WHITE OAK	2" DIA.	B&B	50' x 40'	

- GENERAL NOTES:**
- FIELD VERIFY ALL EXISTING SITE CONDITIONS, UNDERGROUND UTILITIES, ABOVE GRADE UTILITIES, AND UTILITY STRUCTURES. EXTENT OF PAVING AND CURBS, AND ALL EXISTING VEGETATION PRIOR TO DEMOLITION OR NEW CONSTRUCTION. CONTACT IOWA ONE-CALL AND OWNER FOR UTILITY LOCATES PRIOR TO ANY WORK ON SITE. NOTIFY ARCHITECT OR ANY DISCREPANCIES BEFORE CONTINUING DEMOLITION OR NEW CONSTRUCTION.
 - REFERENCE CIVIL SHEETS FOR DEMOLITION, PAVING, SITE STRUCTURES, UTILITIES, AND GRADING.
 - REFERENCE ELECTRICAL SHEETS FOR SITE LIGHTING FIXTURES AND POWER.
 - CONTRACTOR MUST PROVIDE EROSION / SEDIMENTATION CONTROLS AS REQUIRED TO CONTAIN SEDIMENT WITHIN CONSTRUCTION AREA. REFERENCE CIVIL SHEETS FOR ADDITIONAL INFORMATION.

- LANDSCAPE NOTES:**
- OWNER SHALL PROVIDE AND INSTALL TREES, SHRUBS, AND PERENNIAL PLANTS OUTSIDE OF THIS CONTRACT. CONTRACTOR SHALL PREPARE PLANTING AREAS AS DETAILED IN PREPARATION FOR OWNER'S SCOPE OF WORK.
 - CONTRACT INCLUDES INSTALLATION OF LAWN SEED AND SOD AS SPECIFIED.

- KEYED NOTES:**
- NEW PCC WALK PAVEMENT, REFERENCE CIVIL LAYOUT AND DETAILS
 - NEW VEHICULAR PAVEMENT, REFERENCE CIVIL LAYOUT AND DETAILS
 - STRUCTURAL STOOP, REFERENCE CIVIL LAYOUT AND STRUCTURAL DETAILS
 - NEW LIGHTPOLE, REFERENCE ELECTRICAL PLANS AND DETAILS
 - PIPE BOLLARD W/ VINYL SLEEVE, SEE DETAIL 7L301
 - EXISTING TREE TO REMAIN, PROTECT
 - NEW TREE PLANTING BY OWNER, SEE DETAIL 1L301
 - NEW PLANTING AREA, SEE DETAIL 3L301
 - STONE MULCH, 3" DEPTH WITH WATER PERMEABLE WEED-BARRIER FABRIC, HOLD FABRIC BACK FROM TREE PLANTINGS
 - STONE MULCH MAINTENANCE STRIP 3" DEPTH x 18" WIDTH, SEE DETAIL 3L301
 - STONE MULCH MAINTENANCE STRIP 3" DEPTH, REF. PLAN FOR WIDTH, SEE DETAIL 5L301
 - NEW LAWN AREA, SEE DETAIL 4L301
 - NEW BASKETBALL GOAL



200 5th Ave. SE, Suite 201
Cedar Rapids, IA 52401
P: 319-363-6018
F: 319-363-7349
www.opnarchitects.com

Owner:
LINN-MAR COMMUNITY SCHOOL DISTRICT
2999 North Tenth Street
Marion, IA 52302

Project:
LINN-MAR INTERMEDIATE SCHOOL
35th Ave
Marion, Iowa 52302

Civil Engineer:
Hall & Hall Engineers, Inc.
1860 Boyson Rd.
Hiawatha, IA 52233
P: 319-362-9548

Structural Engineer:
M2B Structural Engineers
422 2nd Ave SE
Cedar Rapids, IA 52401
P: 319-364-0666

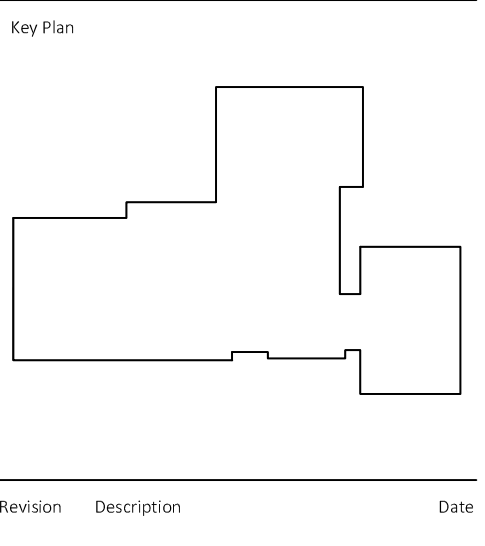
Mechanical Engineer:
Design Engineers
8801 Prairie View Ln. SW, Suite 200
Cedar Rapids, IA 52404
P: 319-841-1944

Electrical Engineer:
Design Engineers
8801 Prairie View Ln. SW, Suite 200
Cedar Rapids, IA 52404
P: 319-841-1944

Telecommunications Engineer:
Design Engineers
8801 Prairie View Ln. SW, Suite 200
Cedar Rapids, IA 52404
P: 319-841-1944

Fire Suppression Engineer:
Design Engineers
8801 Prairie View Ln. SW, Suite 200
Cedar Rapids, IA 52404
P: 319-841-1944

Food Service Consultant:
Advanced Foodservice Consulting
6201 South Gateway Dr.
Marion, IA 52402
P: 319-447-3515



Revision Description Date

1 35TH AVE SITE PLAN - NEW INTERMEDIATE SCHOOL
1" = 50'-0"

PRELIMINARY. NOT FOR CONSTRUCTION.

OPN Project No.
18245000
Sheet Issue Date
90% REVIEW SET 03/14/2019
Sheet Name
OVERALL SITE PLAN
Sheet Number

L101

GENERAL NOTES:

- FIELD VERIFY ALL EXISTING SITE CONDITIONS, UNDERGROUND UTILITIES, ABOVE GRADE UTILITIES, AND UTILITY STRUCTURES. EXTENT OF PAVING AND CURBS, AND ALL EXISTING VEGETATION PRIOR TO DEMOLITION OR NEW CONSTRUCTION. CONTACT IOWA ONE-CALL AND OWNER FOR UTILITY LOCATES PRIOR TO ANY WORK ON SITE. NOTIFY ARCHITECT OR ANY DISCREPANCIES BEFORE CONTINUING DEMOLITION OR NEW CONSTRUCTION.
- REFERENCE CIVIL SHEETS FOR DEMOLITION, PAVING, SITE STRUCTURES, UTILITIES, AND GRADING.
- REFERENCE ELECTRICAL SHEETS FOR SITE LIGHTING FIXTURES AND POWER.
- CONTRACTOR MUST PROVIDE EROSION / SEDIMENTATION CONTROLS AS REQUIRED TO CONTAIN SEDIMENT WITHIN CONSTRUCTION AREA. REFERENCE CIVIL SHEETS FOR ADDITIONAL INFORMATION.

LANDSCAPE NOTES:

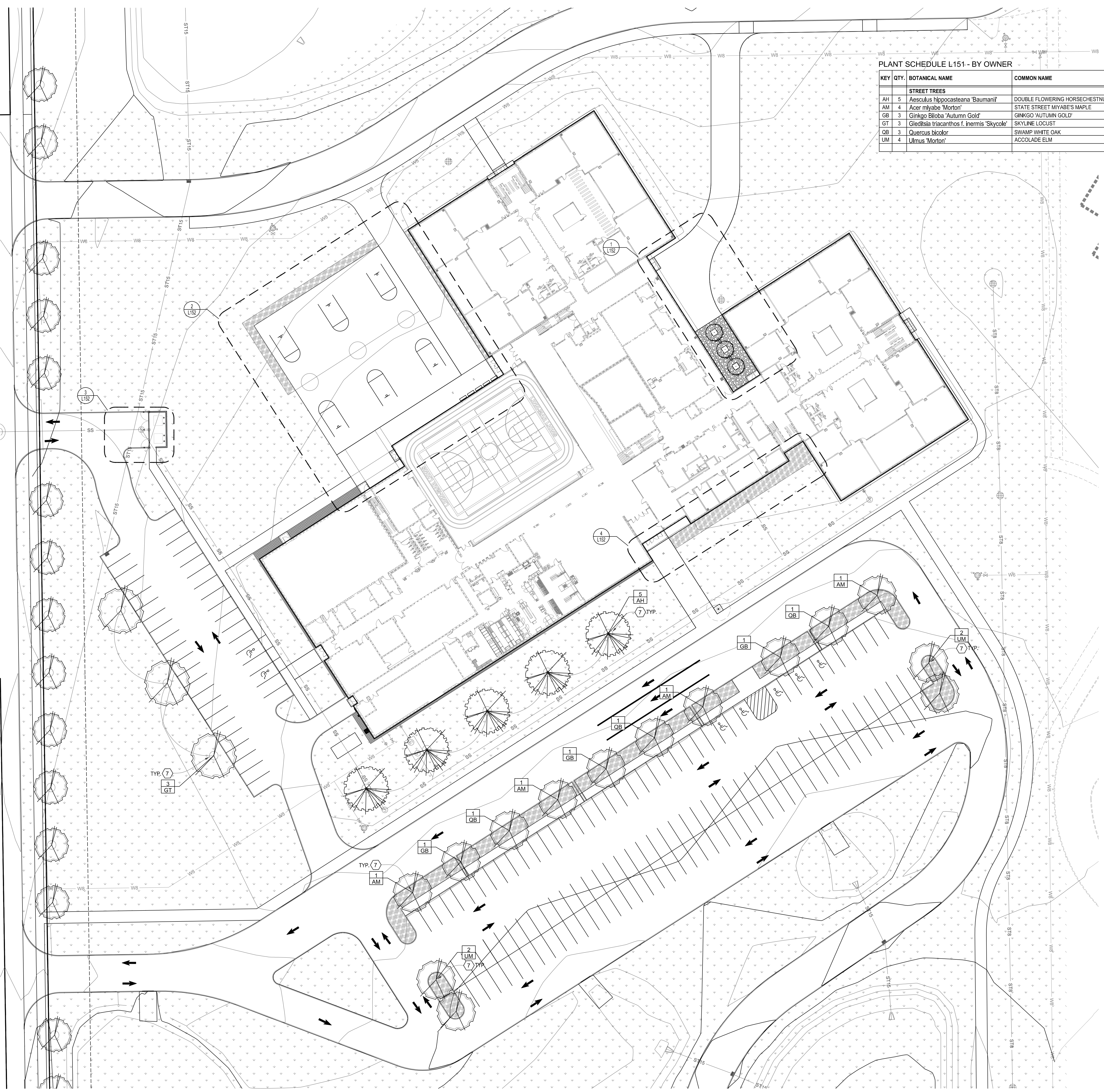
- OWNER SHALL PROVIDE AND INSTALL TREES, SHRUBS, AND PERENNIAL PLANTS OUTSIDE OF THIS CONTRACT. CONTRACTOR SHALL PREPARE PLANTING AREAS AS DETAILED IN PREPARATION FOR OWNER'S SCOPE OF WORK.
- CONTRACT INCLUDES INSTALLATION OF LAWN SEED AND SOD AS SPECIFIED.

KEYED NOTES:

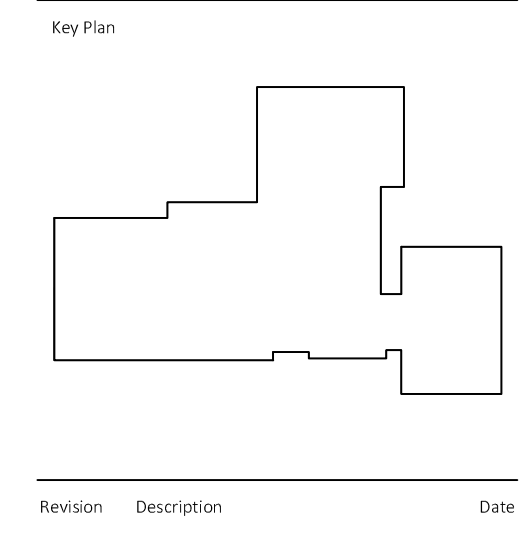
- NEW PCC WALK PAVEMENT, REFERENCE CIVIL LAYOUT AND DETAILS
- NEW VEHICULAR PAVEMENT, REFERENCE CIVIL LAYOUT AND DETAILS
- STRUCTURAL STOOP, REFERENCE CIVIL LAYOUT AND STRUCTURAL DETAILS
- NEW LIGHTPOLE, REFERENCE ELECTRICAL PLANS AND DETAILS
- PIPE BOLLARD W/ VINYL SLEEVE, SEE DETAIL 7L301
- EXISTING TREE TO REMAIN, PROTECT
- NEW TREE PLANTING BY OWNER, SEE DETAIL 1L301
- NEW PLANTING AREA, SEE DETAIL 3L301
- STONE MULCH, 3" DEPTH WITH WATER PERMEABLE WEED-BARRIER FABRIC, HOLD FABRIC BACK FROM TREE PLANTINGS
- STONE MULCH MAINTENANCE STRIP 3" DEPTH x 18" WIDTH, SEE DETAIL 3L301
- STONE MULCH MAINTENANCE STRIP 3" DEPTH, REF. PLAN FOR WIDTH, SEE DETAIL 5L301
- NEW LAWN AREA, SEE DETAIL 4L301
- NEW BASKETBALL GOAL

PLANT SCHEDULE L151- BY OWNER

KEY	QTY	BOTANICAL NAME	COMMON NAME	MIN. SIZE	COND.	MATURE HEIGHT & SPREAD	NOTES
STREET TREES							
AH	5	<i>Aesculus hippocastanea 'Baumani'</i>	DOUBLE FLOWERING HORSECHESTNUT	2" DIA.	B&B	60' x 40'	FRUITLESS VARIETY
AM	4	<i>Acer miyabe 'Morton'</i>	STATE STREET MIYABE'S MAPLE	2" DIA.	B&B	30' x 20'	
GB	3	<i>Ginkgo biloba 'Autumn Gold'</i>	GINKGO 'AUTUMN GOLD'	2" DIA.	B&B	50' x 30'	MALE TREES ONLY
GT	3	<i>Gleditsia triacanthos 'Inermis 'Skycole'</i>	SKYLINE LOCUST	2" DIA.	B&B	30-50' x 35-45'	THORNLESS VARIETY
QB	3	<i>Quercus bicolor</i>	SWAMP WHITE OAK	2" DIA.	B&B	50' x 40'	
UM	4	<i>Ulmus 'Morton'</i>	ACCOLADE ELM	2" DIA.	B&B	60' x 40'	

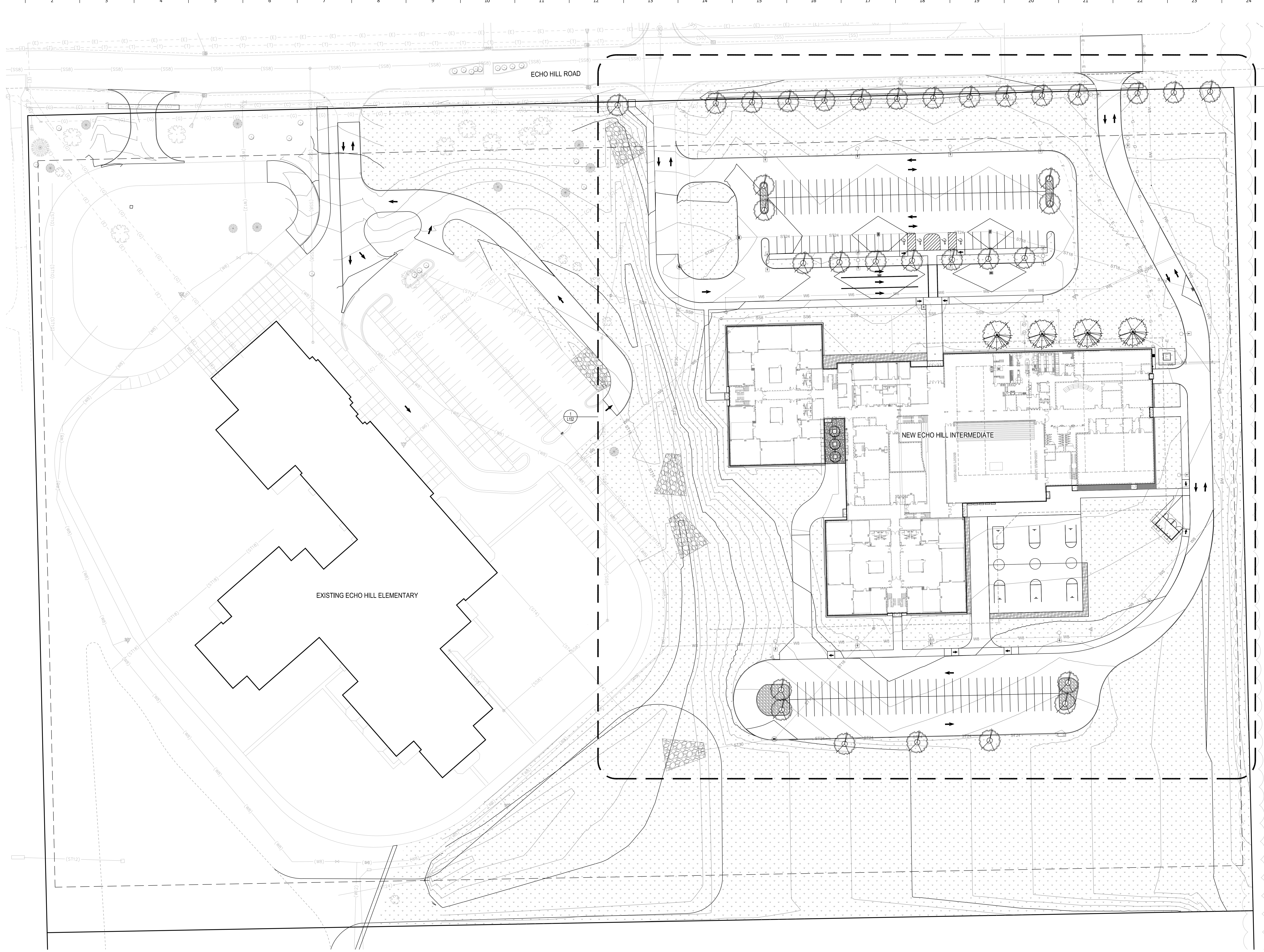


1 35TH AVE SITE PLAN ENLARGEMENT
1" = 30'-0"



Key Plan

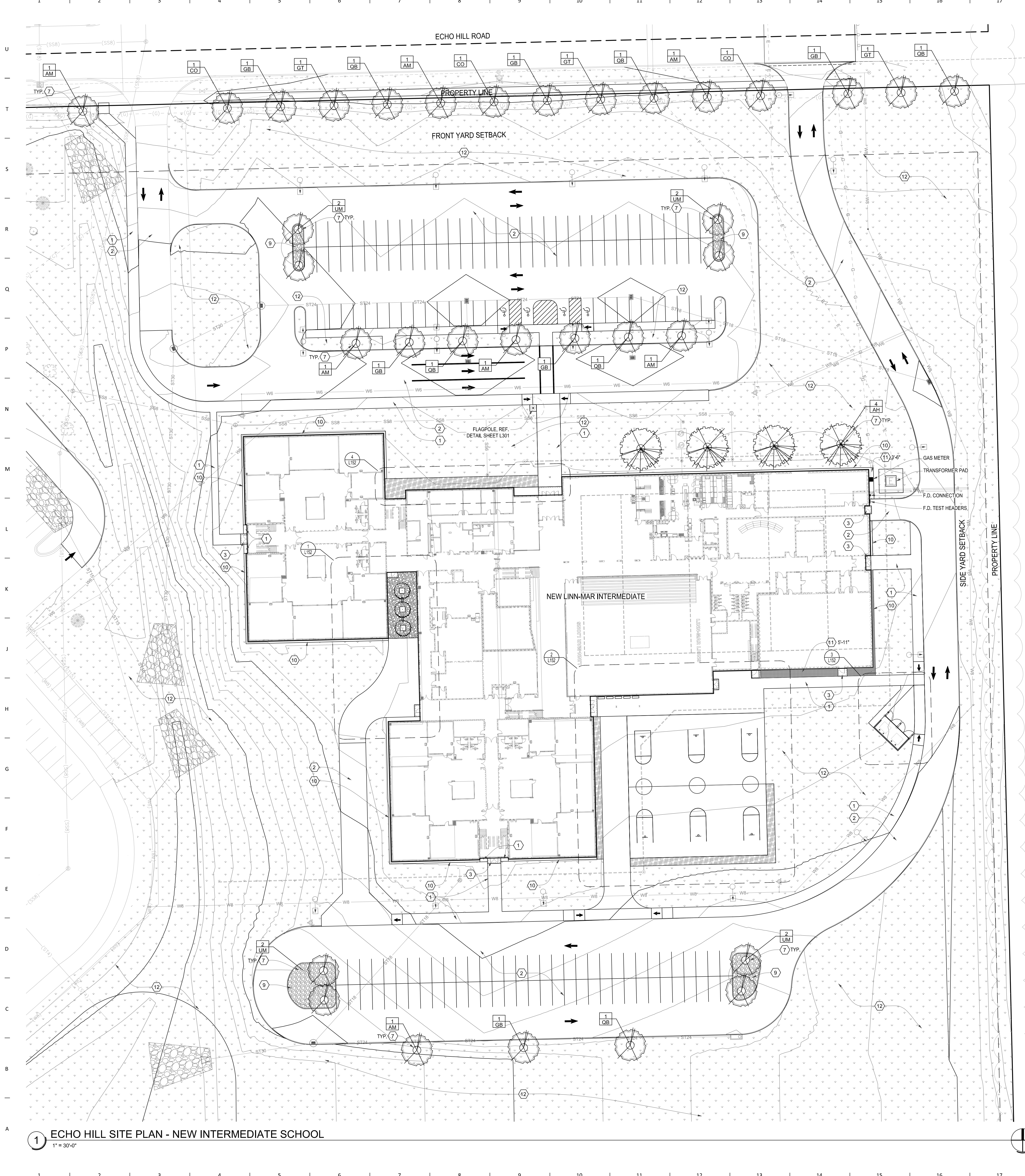
Revision	Description	Date



1 ECHO HILL SITE PLAN - OVERALL
1" = 40'-0"

Key Plan:

Revision	Description	Date



- GENERAL NOTES:**
- FIELD VERIFY ALL EXISTING SITE CONDITIONS, UNDERGROUND UTILITIES, ABOVE GRADE UTILITIES, AND UTILITY STRUCTURES. EXTENT OF PAVING AND CURBS, AND ALL EXISTING VEGETATION PRIOR TO DEMOLITION OR NEW CONSTRUCTION. CONTACT IOWA ONE-CALL AND OWNER FOR UTILITY LOCATES PRIOR TO ANY WORK ON SITE. NOTIFY ARCHITECT OF ANY DISCREPANCIES BEFORE CONTINUING DEMOLITION OR NEW CONSTRUCTION.
 - REFERENCE CIVIL SHEETS FOR DEMOLITION, PAVING, SITE STRUCTURES, UTILITIES, AND GRADINGS.
 - REFERENCE ELECTRICAL SHEETS FOR SITE LIGHTING FIXTURES AND POWER.
 - CONTRACTOR MUST PROVIDE EROSION / SEDIMENTATION CONTROLS AS REQUIRED TO CONTAIN SEDIMENT WITHIN CONSTRUCTION AREA. REFERENCE CIVIL SHEETS FOR ADDITIONAL INFORMATION.

- LANDSCAPE NOTES:**
- OWNER SHALL PROVIDE AND INSTALL TREES, SHRUBS, AND PERENNIAL PLANTS OUTSIDE OF THIS CONTRACT. CONTRACTOR SHALL PREPARE PLANTING AREAS AS DETAILED IN PREPARATION FOR OWNER'S SCOPE OF WORK.
 - CONTRACT INCLUDES INSTALLATION OF LAWN SEED AND SOD AS SPECIFIED.

- KEYED NOTES:**
- NEW PCC WALK PAVEMENT. REFERENCE CIVIL LAYOUT AND DETAILS
 - NEW VEHICULAR PAVEMENT. REFERENCE CIVIL LAYOUT AND DETAILS
 - STRUCTURAL STOOP. REFERENCE CIVIL LAYOUT AND STRUCTURAL DETAILS
 - NEW LIGHT POLE. REFERENCE ELECTRICAL PLANS AND DETAILS
 - PIPE BOLLARD W/ VINYL SLEEVE. SEE DETAIL 7L301
 - EXISTING TREE TO REMAIN. PROTECT
 - NEW TREE PLANTING BY OWNER. SEE DETAIL 1L301
 - NEW PLANTING AREA. SEE DETAIL 3L301
 - STONE MULCH, 3" DEPTH WITH WATER PERMEABLE WEED-BARRIER FABRIC. HOLD FABRIC BACK FROM TREE PLANTINGS
 - STONE MULCH MAINTENANCE STRIP 3" DEPTH x 18" WIDTH. SEE DETAIL 3L301
 - STONE MULCH MAINTENANCE STRIP 3" DEPTH. REF. PLAN FOR WIDTH. SEE DETAIL 5L301
 - NEW LAWN AREA. SEE DETAIL 4L301
 - NEW BASKETBALL GOAL

200 5th Ave. SE, Suite 201
Cedar Rapids, IA 52401
P: 319-363-6018
F: 319-363-7349
www.opnarchitects.com

Owner:
LINN-MAR COMMUNITY SCHOOL DISTRICT
2999 North Tenth Street
Marion, IA 52302

Project:
LINN-MAR INTERMEDIATE SCHOOL
Echo Hill
Marion, Iowa 52302

Civil Engineer:
Hall & Hall Engineers, Inc.
1860 Boyson Rd.
Hiwatha, IA 52233
P: 319-362-9548

Structural Engineer:
MBB Structural Engineers
422 2nd Ave SE
Cedar Rapids, IA 52401
P: 319-364-0666

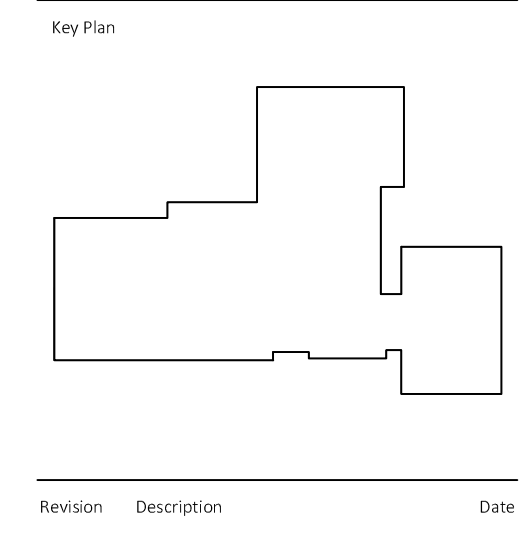
Mechanical Engineer:
Design Engineers
8801 Prairie View Ln. SW, Suite 200
Cedar Rapids, IA 52404
P: 319-841-1944

Electrical Engineer:
Design Engineers
8801 Prairie View Ln. SW, Suite 200
Cedar Rapids, IA 52404
P: 319-841-1944

Telecommunications Engineer:
Design Engineers
8801 Prairie View Ln. SW, Suite 200
Cedar Rapids, IA 52404
P: 319-841-1944

Fire Suppression Engineer:
Design Engineers
8801 Prairie View Ln. SW, Suite 200
Cedar Rapids, IA 52404
P: 319-841-1944

Food Service Consultant:
Advanced Foodservice Consulting
6201 South Gateway Dr.
Marion, IA 52402
P: 319-447-3515



PLANT SCHEDULE - BY OWNER

KEY	QTY.	BOTANICAL NAME	COMMON NAME	MIN. SIZE	COND.	MATURE HEIGHT & SPREAD	NOTES
CANOPY TREES							
AH	4	Aesculus hippocastanea 'Baumani'	DOUBLE FLOWERING HORSECHESTNUT	2" DIA.	B&B	60' x 40'	FRUITLESS VARIETY
AM	7	Acer myriade 'Morton'	STATE STREET MYRABE'S MAPLE	2" DIA.	B&B	30' x 20'	
CO	3	Celtis occidentalis	HACKBERRY	2" DIA.	B&B	40-60' x 40-45'	
GB	6	Ginkgo Biloba 'Autumn Gold'	GINKGO 'AUTUMN GOLD'	2" DIA.	B&B	50' x 30'	MALE TREES ONLY
GT	4	Gleditsia triacanthos f. inermis 'Skycole'	SKYLINE LOCLUST	2" DIA.	B&B	30-50' x 35-45'	THORNLESS VARIETY
OB	7	Quercus bicolor	SWAMP WHITE OAK	2" DIA.	B&B	60' x 40'	
LUM	8	Ulmus 'Morton'	ACCOLADE ELM	2" DIA.	B&B	60' x 40'	
ORNAMENTAL TREES							
CA	3	Cornus alternifolia	PAGODA DOGWOOD	1.5" DIA.	B&B	20' x 20'	SINGLE-STEM TREE FORM

1 ECHO HILL SITE PLAN - NEW INTERMEDIATE SCHOOL
1" = 30'-0"

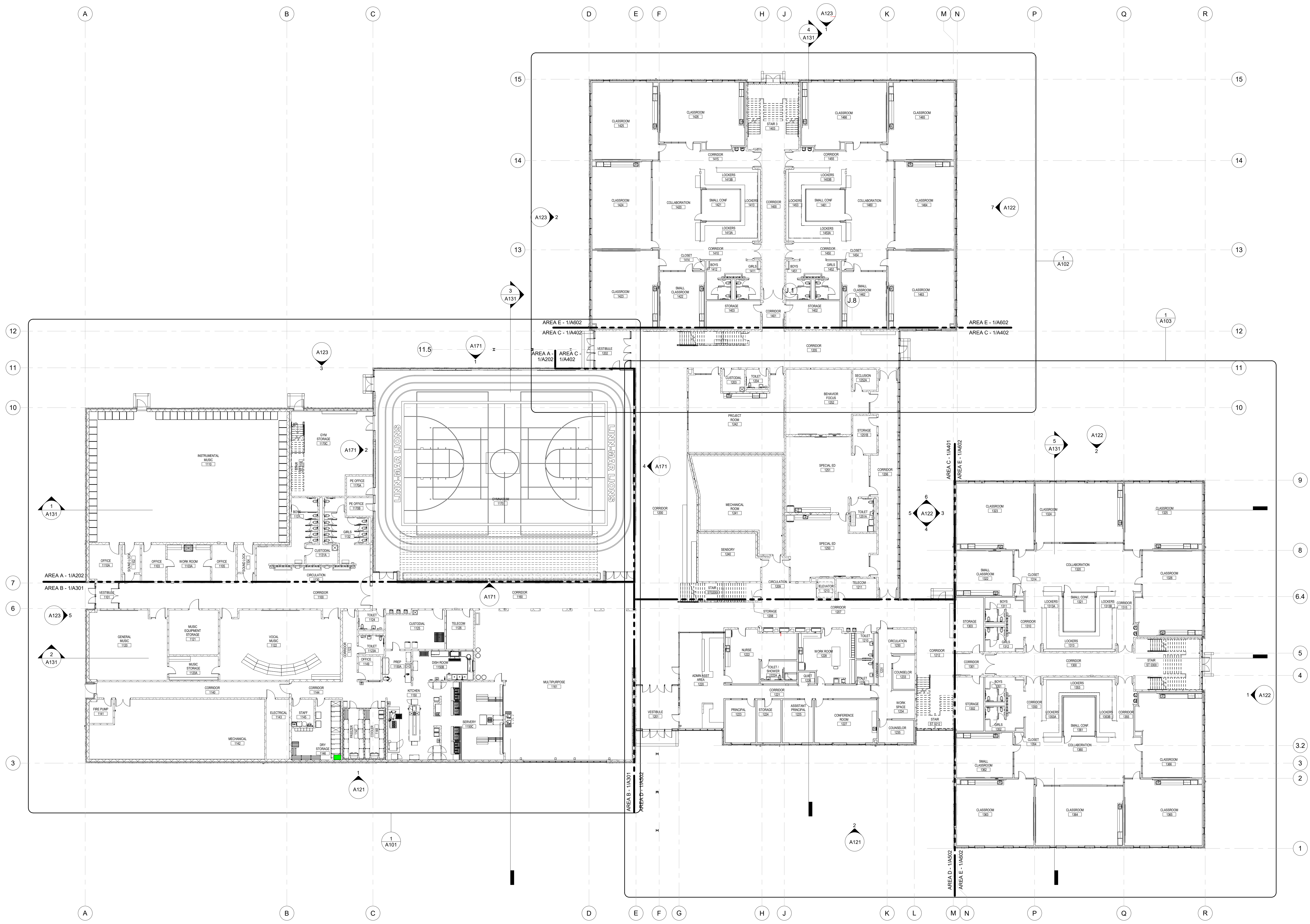
PRELIMINARY. NOT FOR CONSTRUCTION.

OPN Project No.
18245000
Sheet Issue Date
90% REVIEW SET 03/14/2019
Sheet Name
SITE PLAN ENLARGEMENTS
Sheet Number



Revision	Description	Date

PRINTED: 3/29/2019 6:38:59 PM



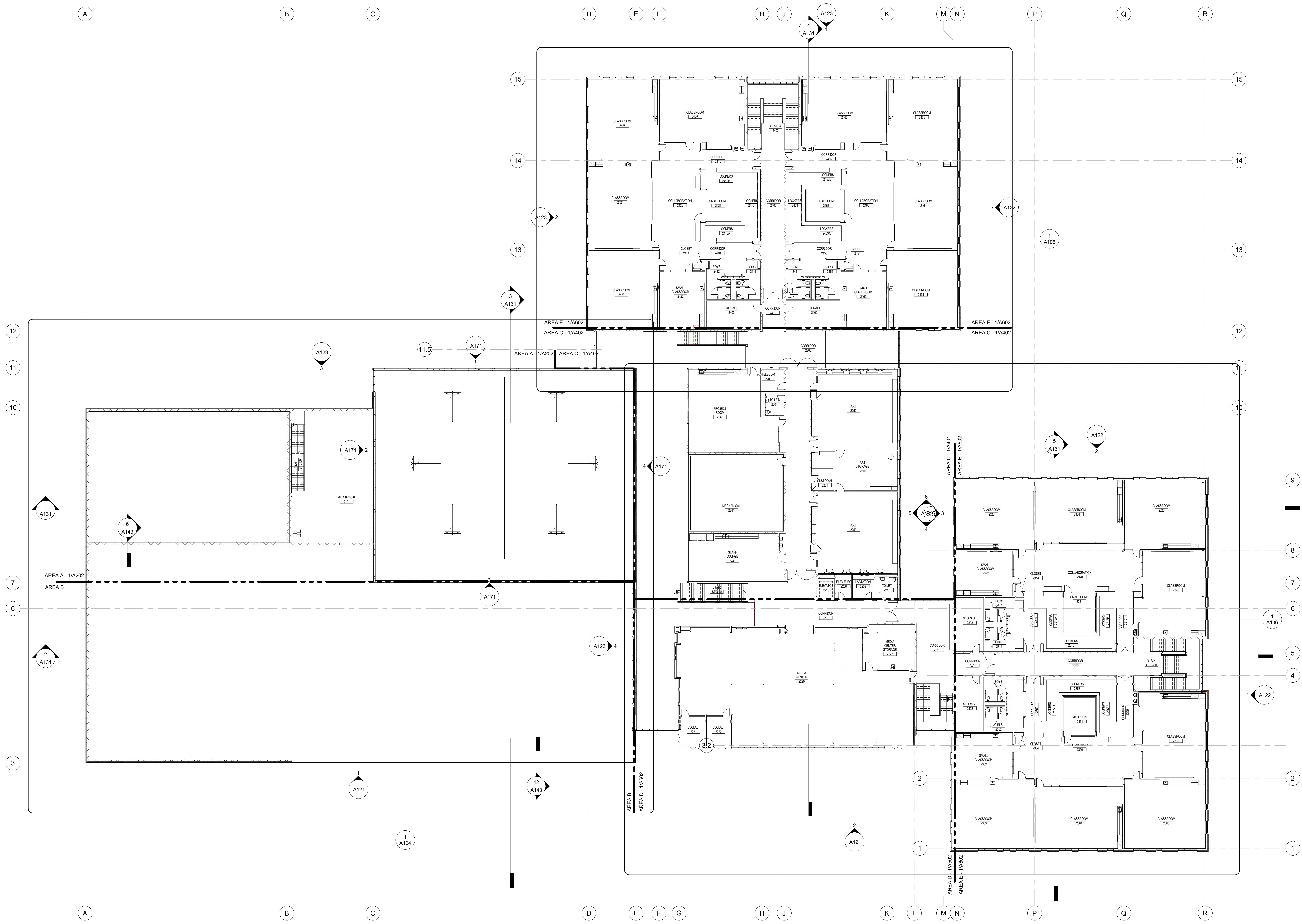
1 LEVEL 1 FLOOR PLAN
1/16" = 1'-0"

PRELIMINARY. NOT FOR CONSTRUCTION.



Revision	Description	Date

PRINTED: 3/29/2019 6:39:09 PM

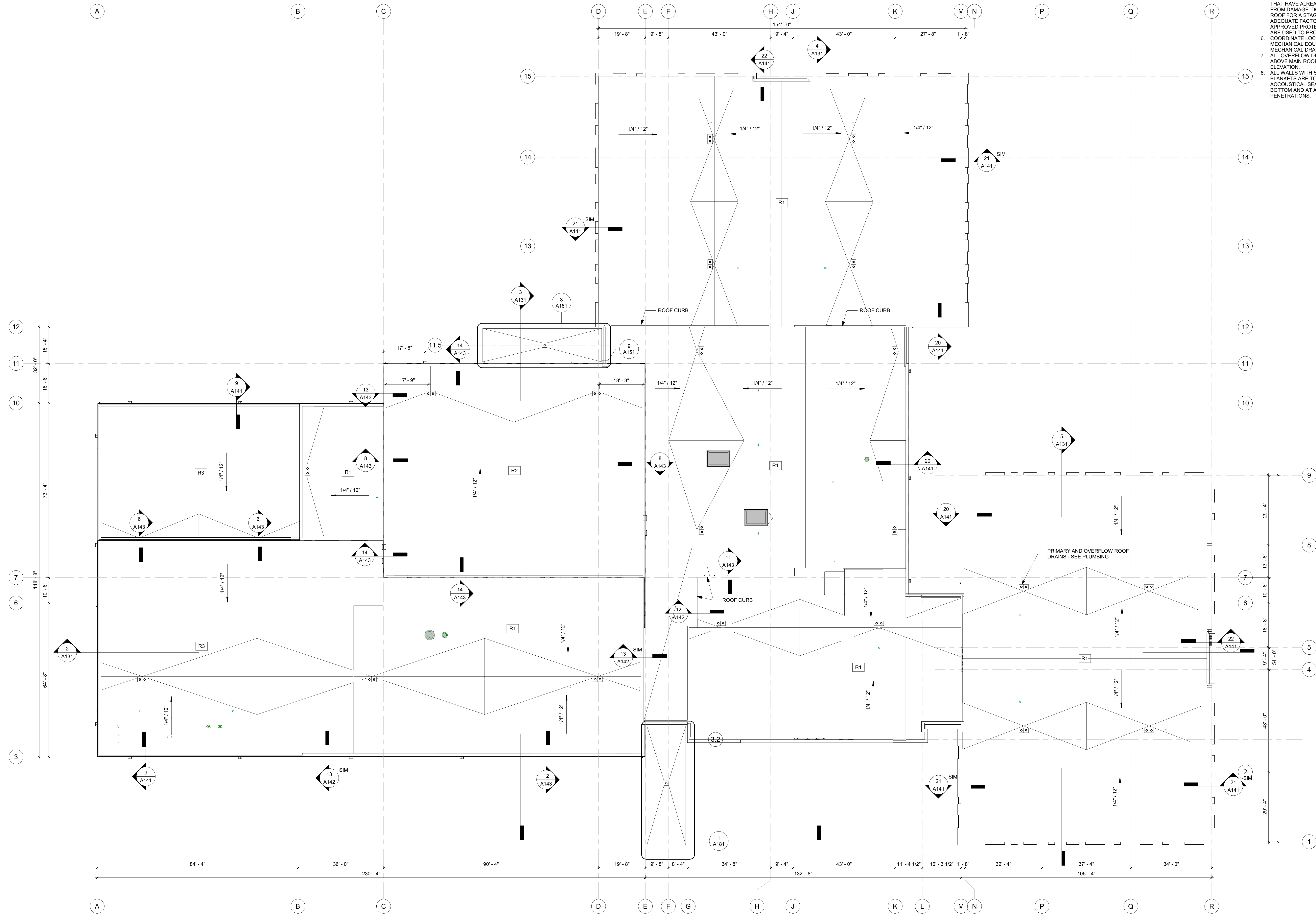


1 LEVEL 2 FLOOR PLAN
1/16" = 1'-0"

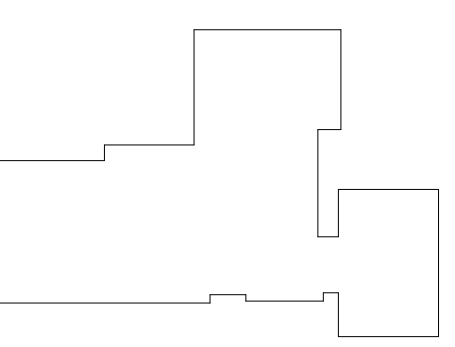
PRELIMINARY. NOT FOR CONSTRUCTION.

GENERAL NOTES

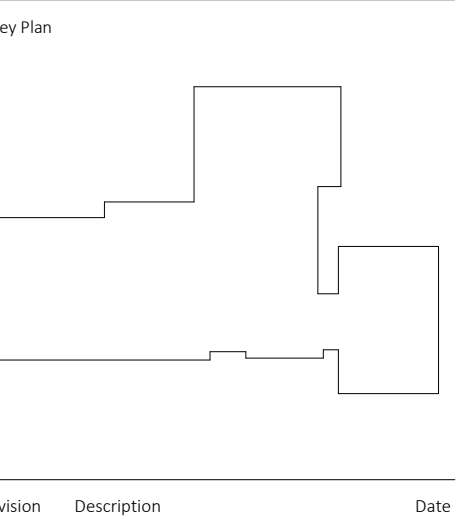
1. NOT ALL ROOF PENETRATIONS ARE SHOWN. VERIFY LOCATIONS OF ALL ROOF PENETRATIONS. PROVIDE BOOTS, FLASHING AND OTHER ACCESSORIES REQUIRED TO PROVIDE A COMPLETE, WATERIGHT, WARRANTED SYSTEM REFER TO INDIVIDUAL DISCIPLINES.
2. COORDINATE SLOPED STRUCTURE AND TAPERED INSULATION WITH STRUCTURAL DRAWINGS.
3. SLOPE ALL TAPERED INSULATION AT 1/4" : 1'-0" PERPENDICULAR TO VALLEY LINES UNLESS NOTED OTHERWISE.
4. SLOPE ALL CRICKETS AT 1/2" : 1'-0" PERPENDICULAR TO VALLEY LINES UNLESS NOTED OTHERWISE.
5. PROTECT SECTIONS OF THE ROOF THAT HAVE ALREADY BEEN INSTALLED FROM DAMAGE. DO NOT USE THE ROOF FOR A STAGING AREA UNLESS ADEQUATE FACTORY, MUTUALLY APPROVED PROTECTION MEASURES ARE USED TO PROTECT THE ROOF.
6. COORDINATE LOCATION OF MECHANICAL EQUIPMENT WITH MECHANICAL DRAWINGS.
7. ALL OVERFLOW DRAINS TO BE 2" ABOVE MAIN ROOF DRAIN INTAKE ELEVATION.
8. ALL WALLS WITH SOUND ATTENUATION BLANKETS ARE TO HAVE ACCOUSTICAL SEALANT AT TOP AND BOTTOM AND AT ALL WALL PENETRATIONS.



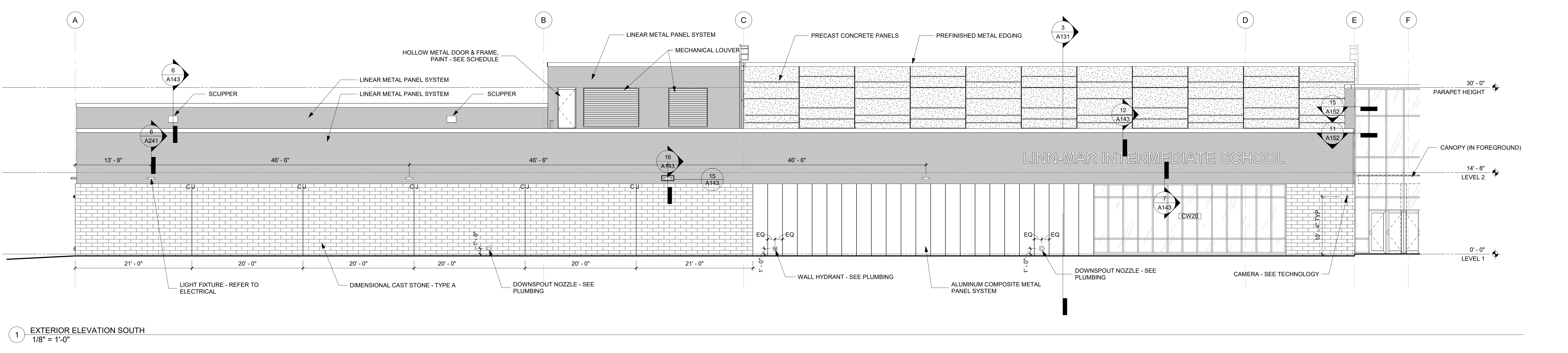
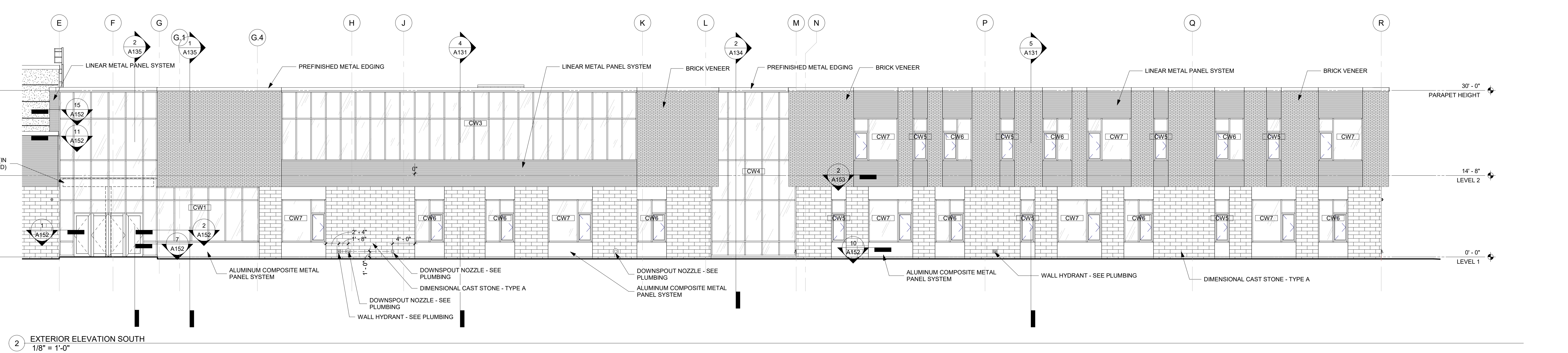
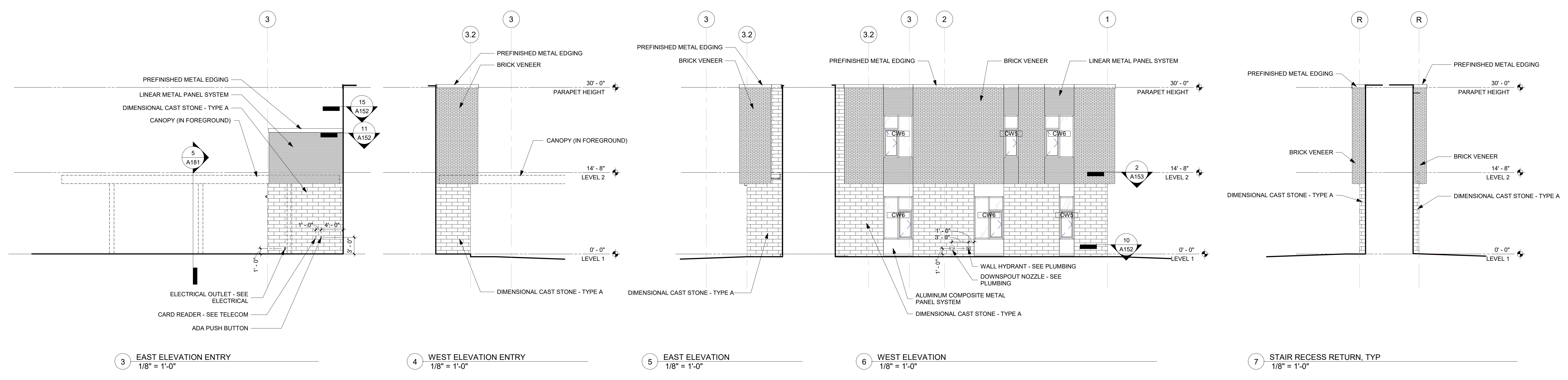
Key Plan



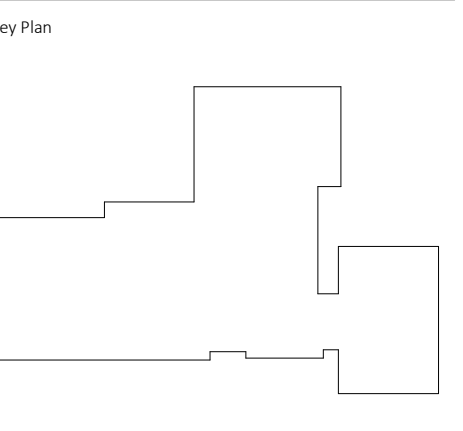
Revision	Description	Date



Revision	Description	Date

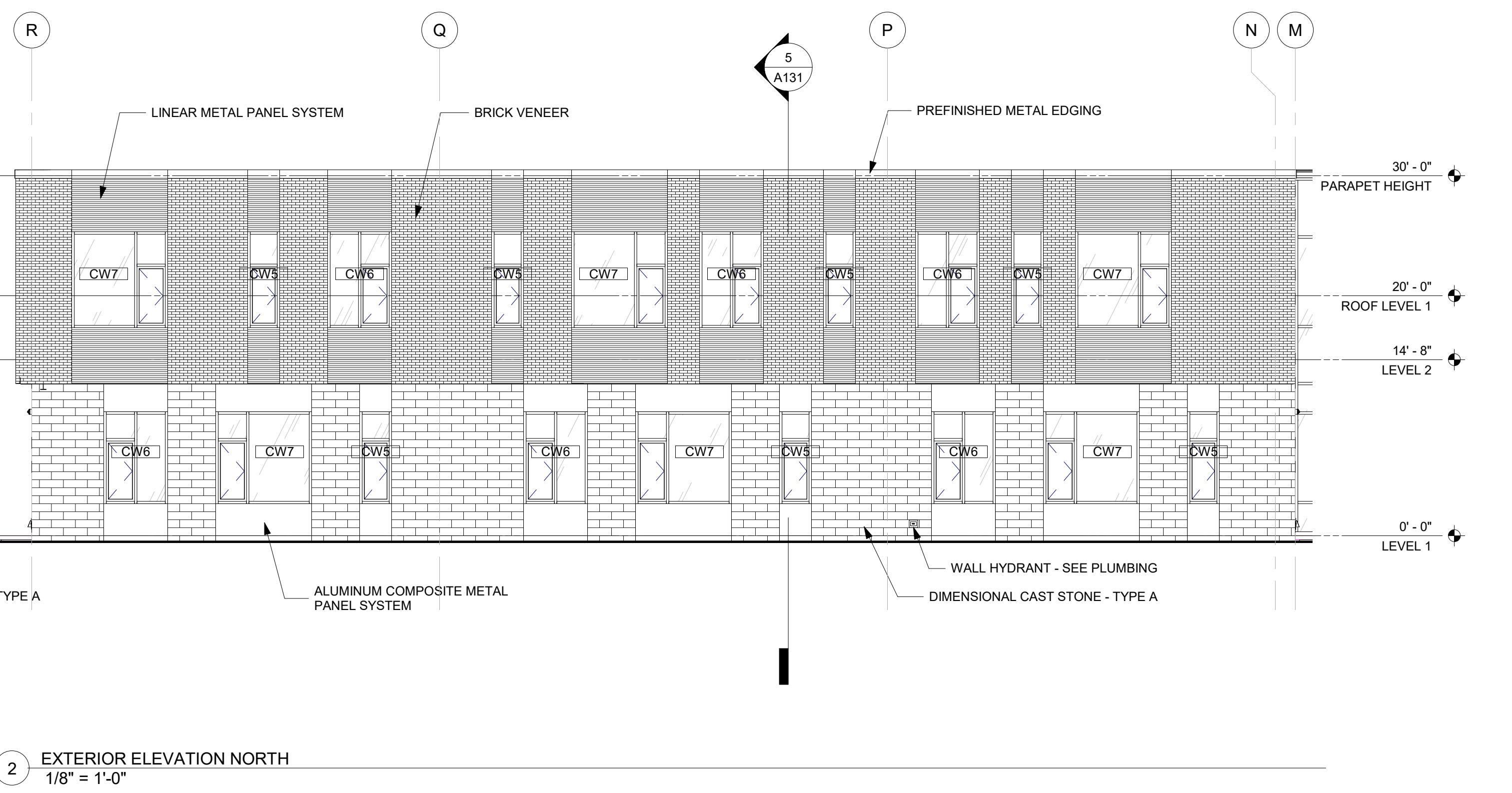
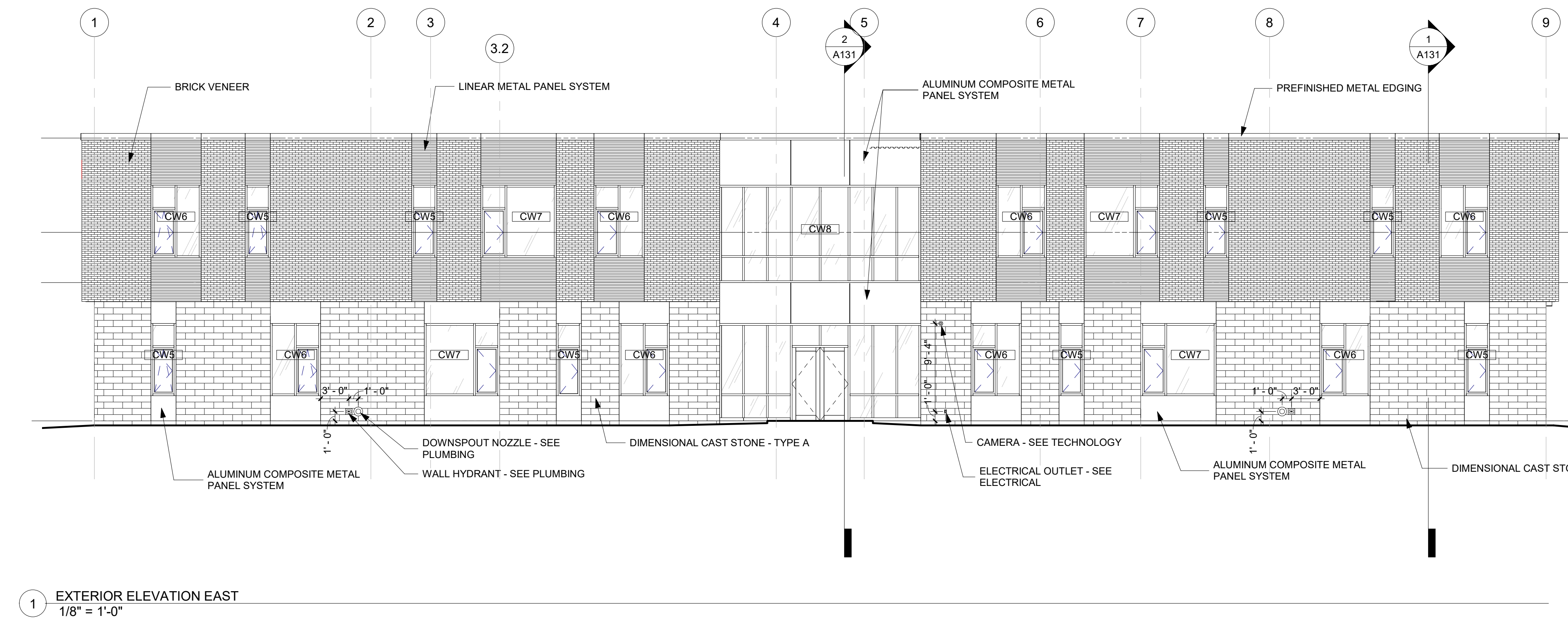
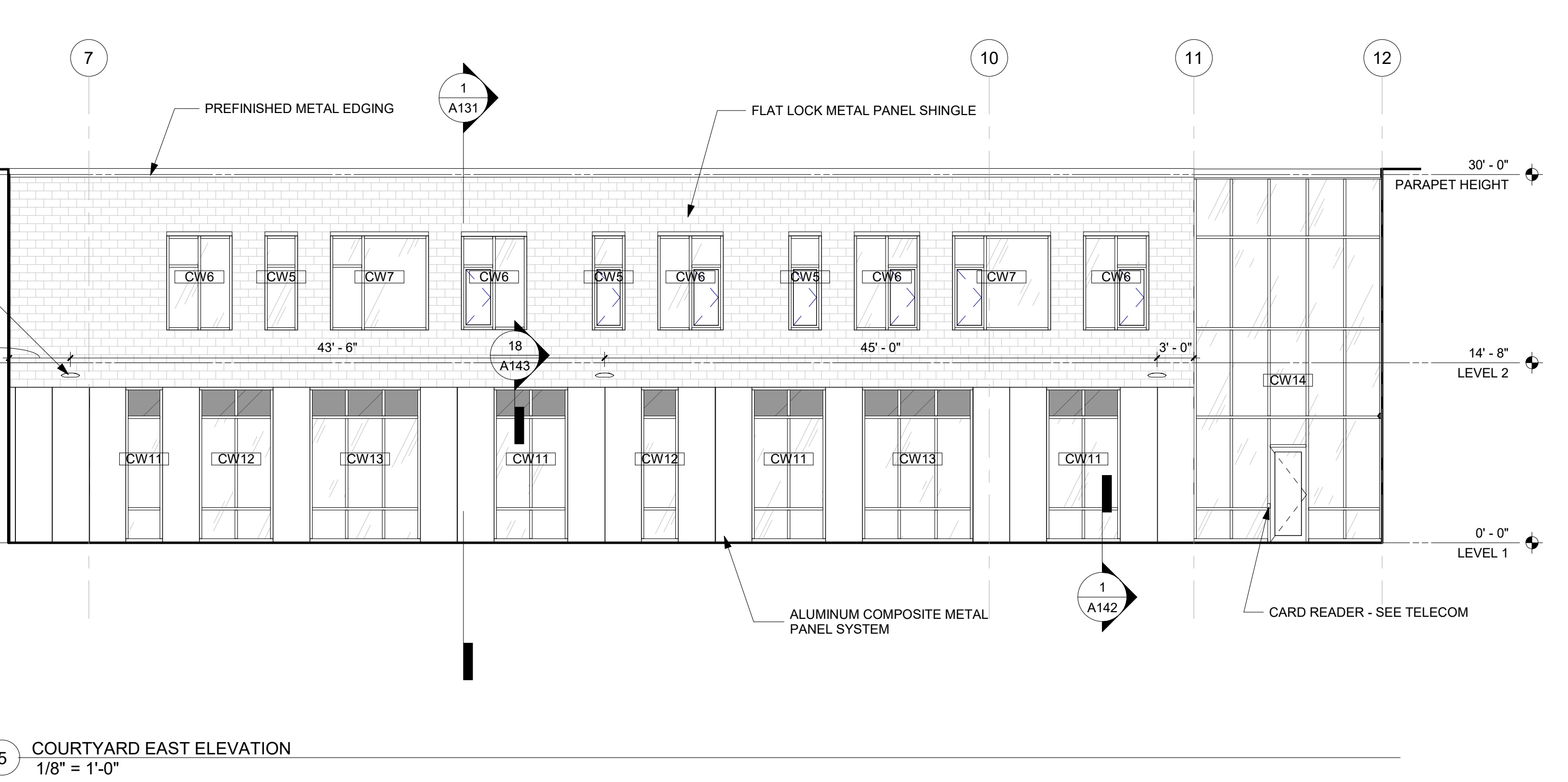
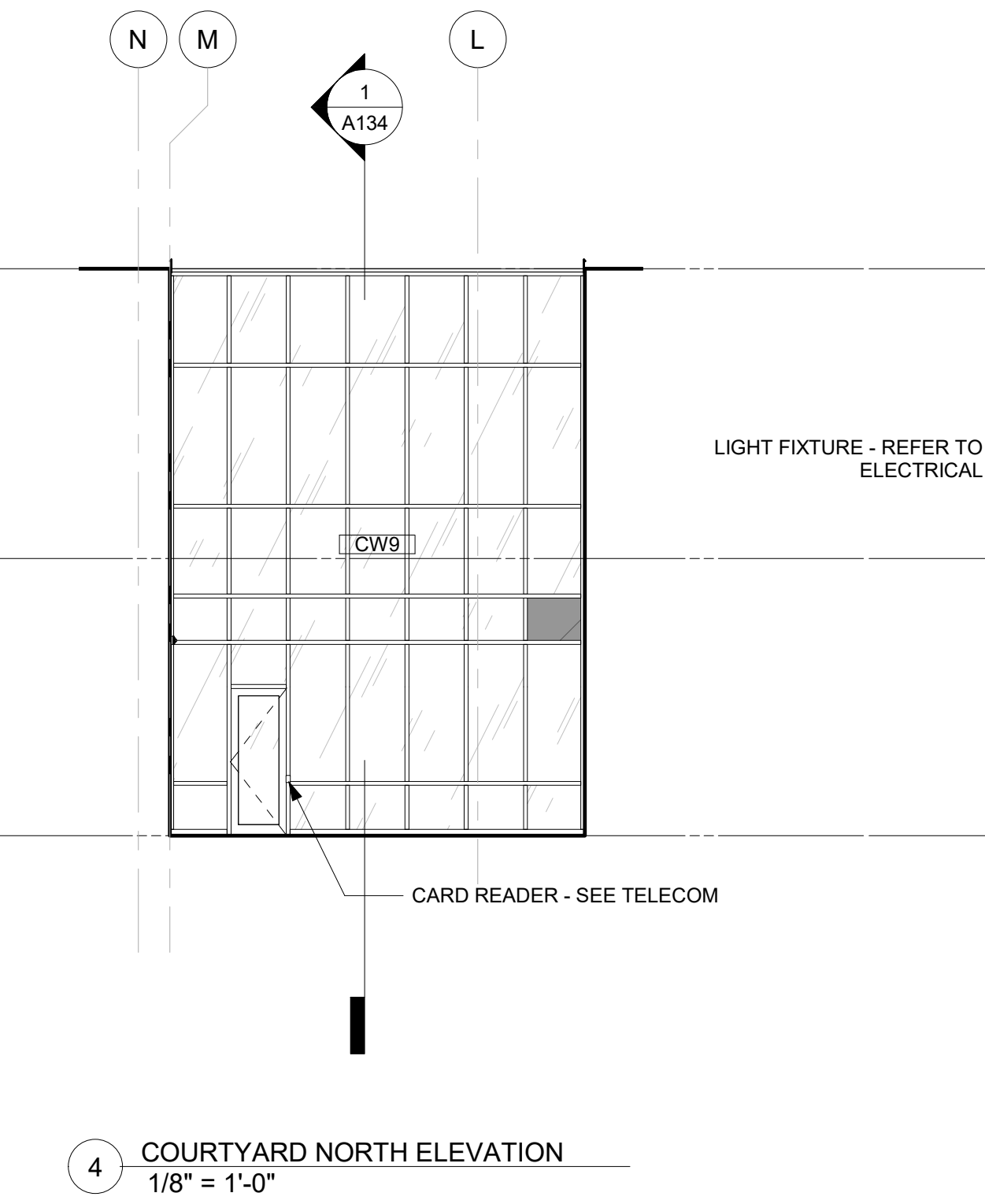
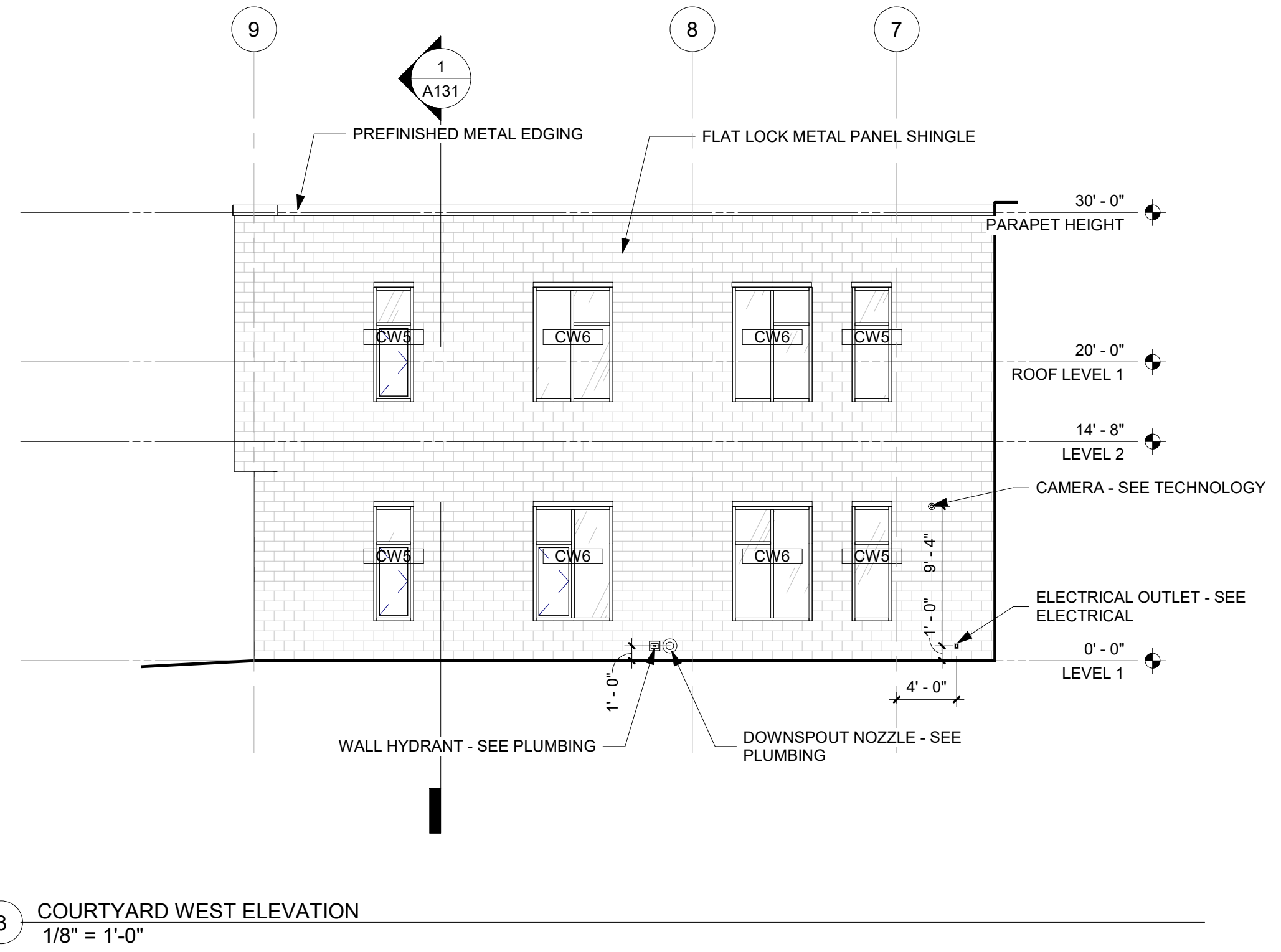
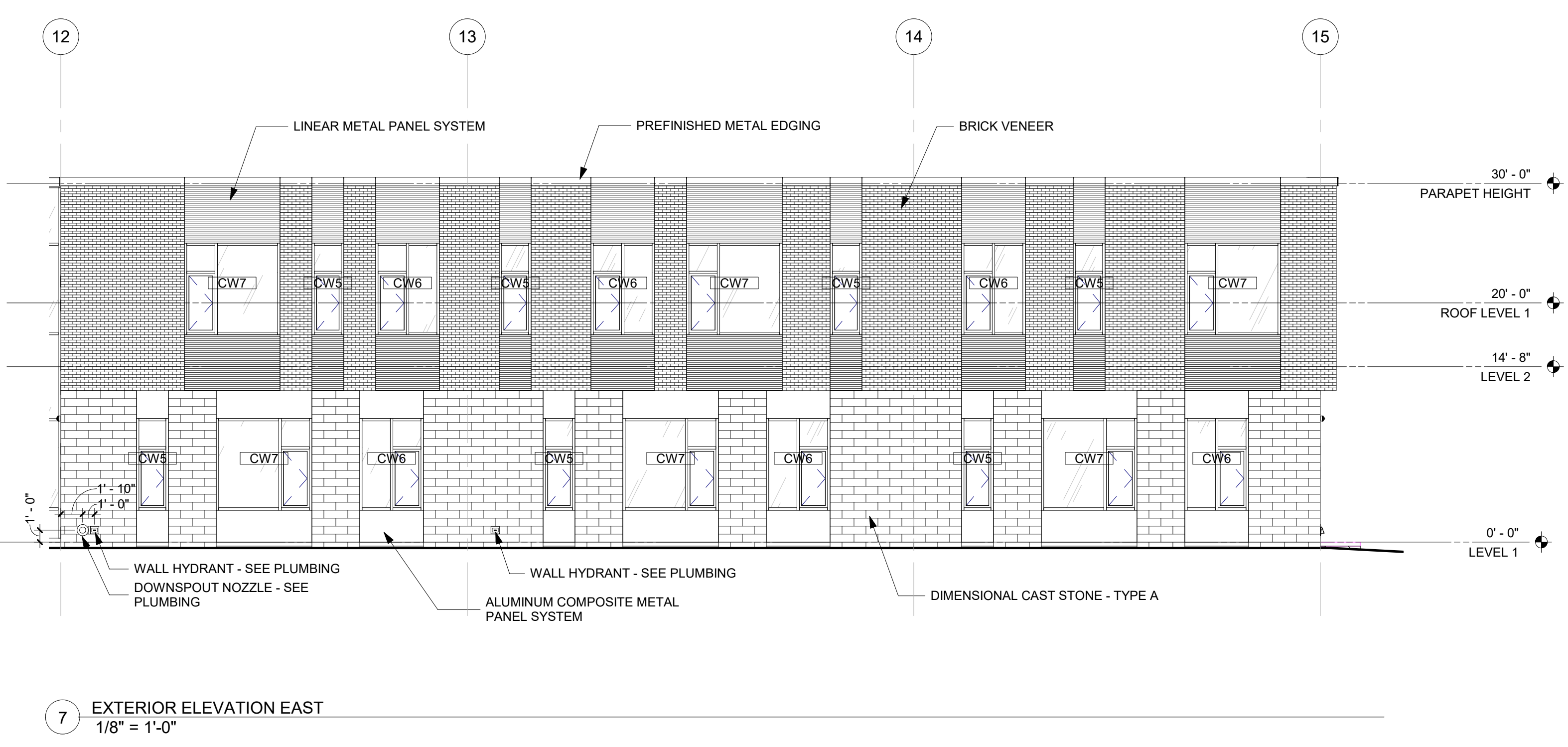
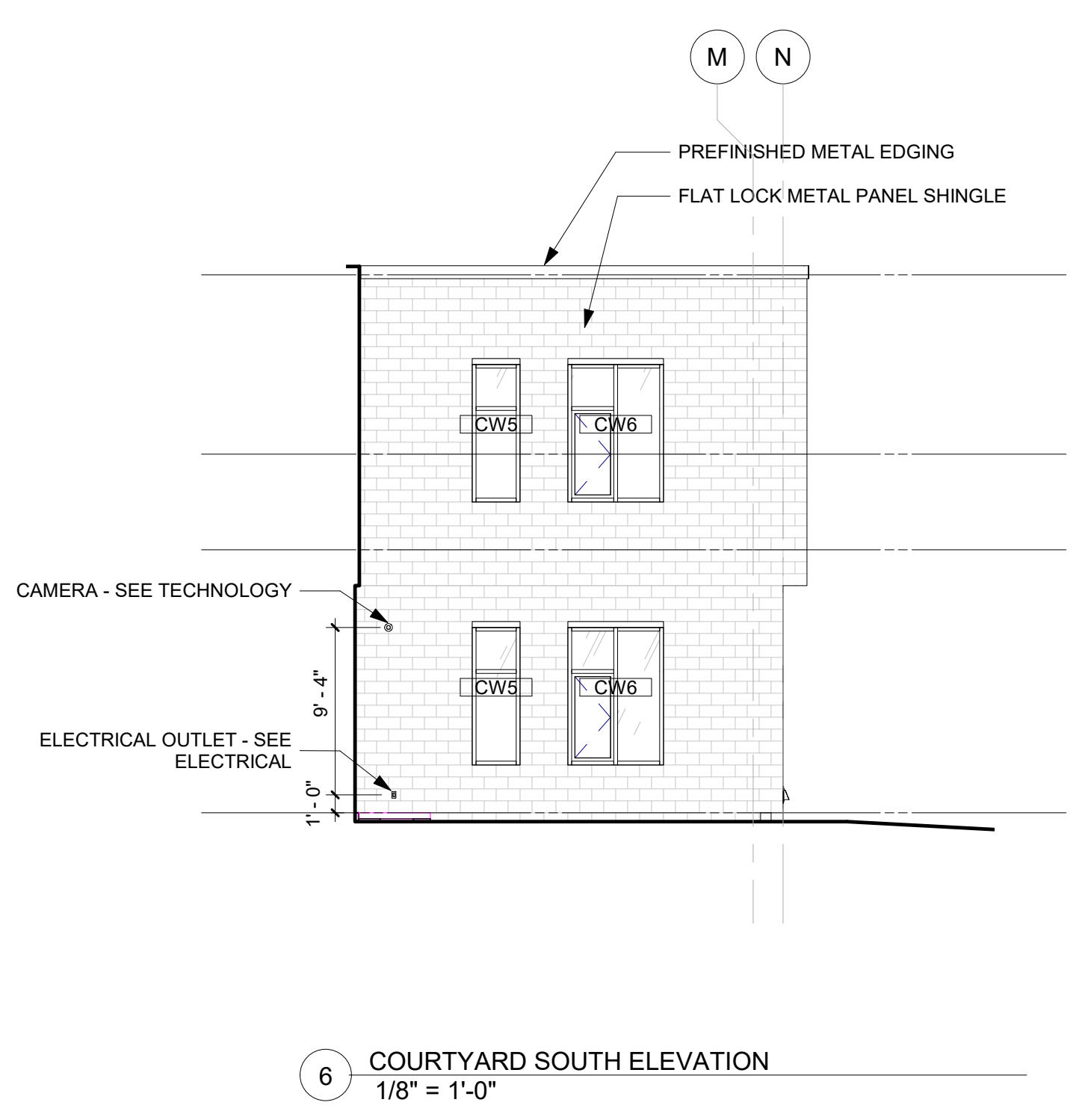


PRELIMINARY. NOT FOR CONSTRUCTION.

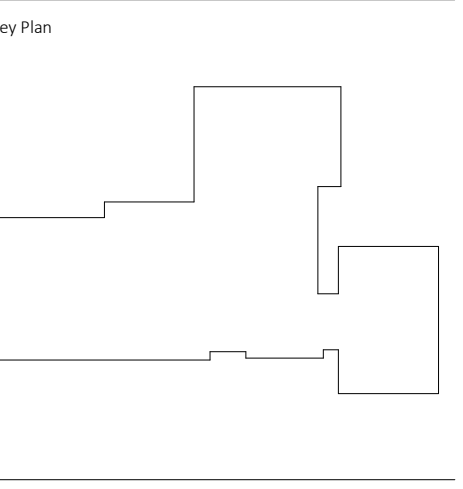


Revision	Description	Date

PRINTED: 3/29/2019 6:41:20 PM



PRELIMINARY. NOT FOR CONSTRUCTION.



Revision	Description	Date

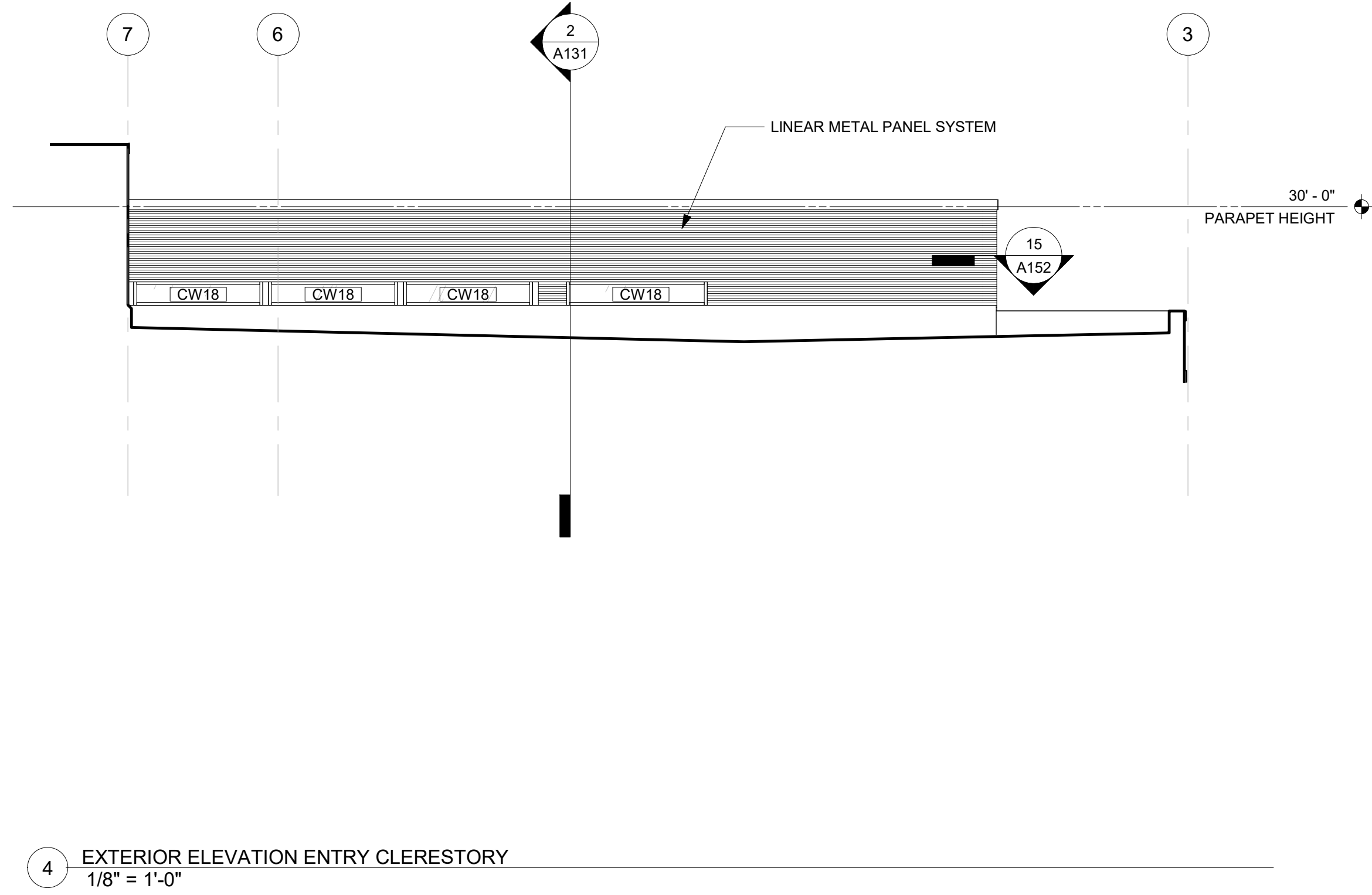
OPN Project No:
18245000

Sheet Issue Date:
BID SET 04/11/2019

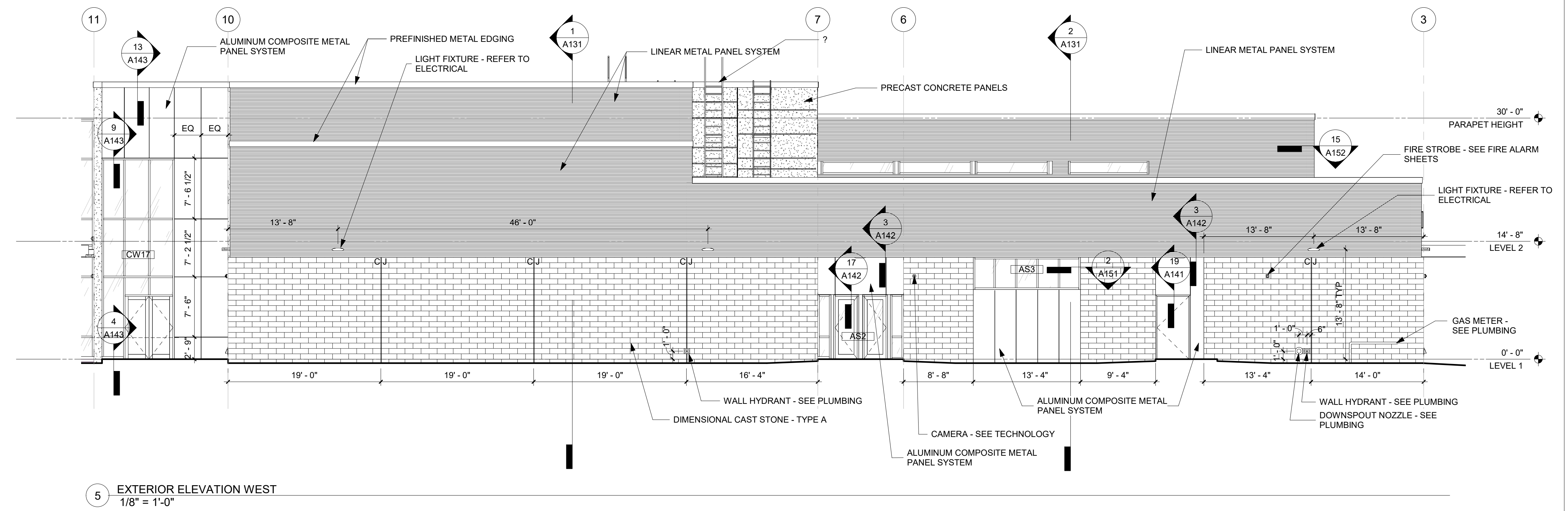
Sheet Name:
EXTERIOR ELEVATIONS

Sheet Number:
A123

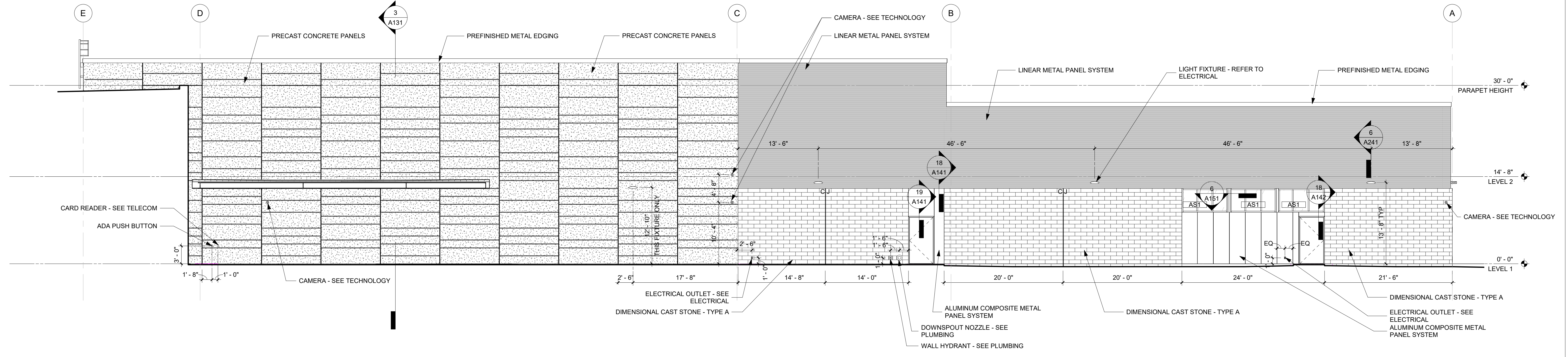
PRELIMINARY. NOT FOR CONSTRUCTION.



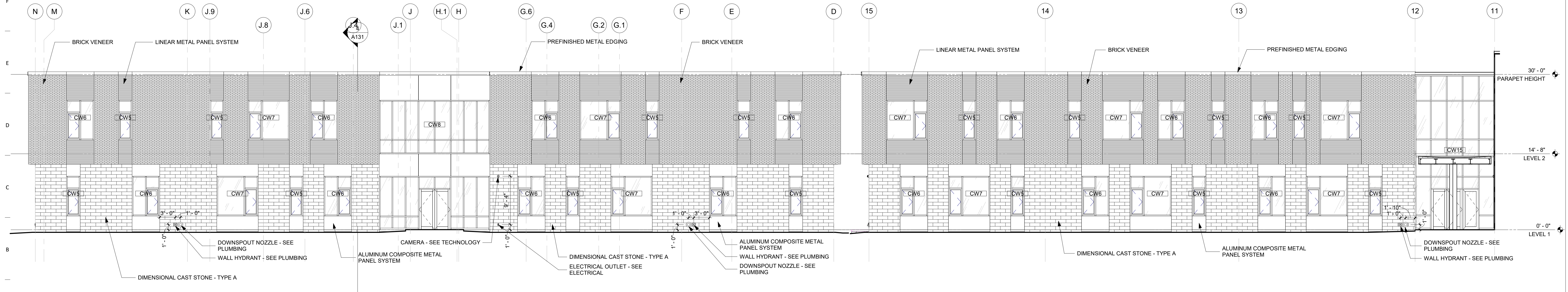
4 EXTERIOR ELEVATION ENTRY CLERESTORY
1/8" = 1'-0"



5 EXTERIOR ELEVATION WEST
1/8" = 1'-0"



3 EXTERIOR ELEVATION NORTH
1/8" = 1'-0"



1 EXTERIOR ELEVATION NORTH
1/8" = 1'-0"

2 EXTERIOR ELEVATION WEST
1/8" = 1'-0"

PRINTED: 3/29/2019 6:41:30 PM