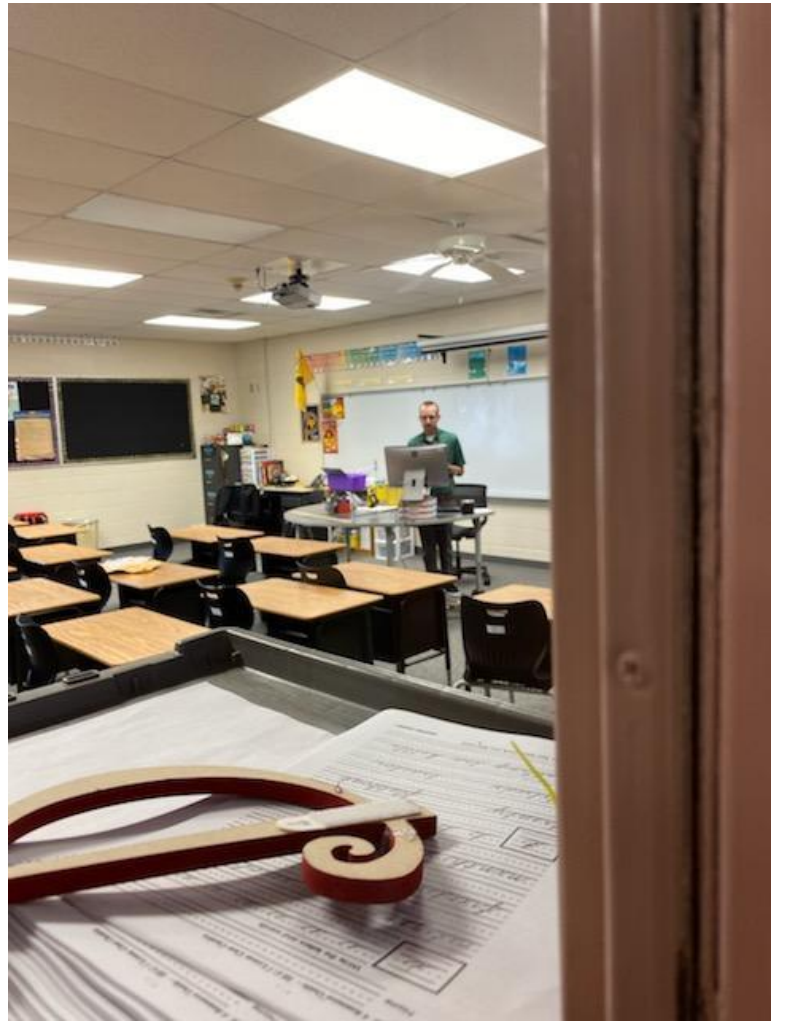
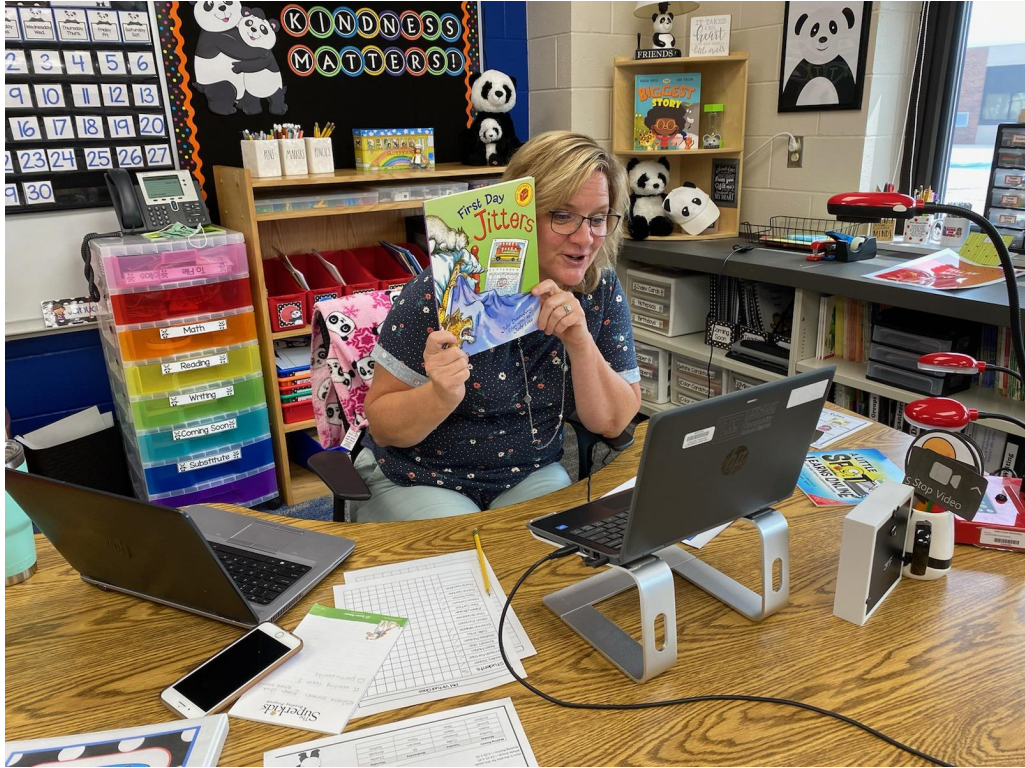


# Teaching and Learning

Board Presentation  
September 14, 2020

# Online





# Online Option

- Organization
- Schedule
- Academic Focus
- Support for Teachers

# Professional Learning

GWAEA Digital Learning Team - LM Technology Integration Coaches

- [Continuous Learning Field Guide](#)
  - September 8-9
  - Divided by grade bands
  - Open meeting link for both afternoons

# Elementary



# Elementary Academic Priorities

- Grade level content is academic priority
  - Utilize screening/diagnostic data
  - Identification of critical standards missed 2019-2020 (May 2020)
  - Incorporate those standards into grade level learning for 2020-2021.



# Elementary Professional Learning



- Grade Level Presentations
  - Updates on curriculum and instruction at the elementary level
  - [All Things Elementary - Resource](#)
- Student Success
  - Data warehouse from Department of Education
  - Allows us to see academic, attendance, and behavior data
- Schoology
- Social Emotional Learning



# Elementary Environments

- Soft Start
  - 50% of the students today - 8-10 per classroom
- Guidance for art, music, and physical education teachers
  - Tables are wiped after student use
  - Sanitization of materials
- Student supports to maintain safety
  - Number dots on carpet to support social distancing when lining up
  - Arrows and dots in hallways
  - Lanyards for face masks to keep them from getting lost or mixed up
  - Desks facing one direction
  - Handwashing protocols





# Intermediate and Middle School



## Intermediate Academic Priorities

- Grade level content is academic priority
  - Utilize screening/diagnostic data
  - Identification of critical standards missed 2019-2020 (May 2020)
  - Incorporate those standards into grade level learning for 2020-2021



# Intermediate Professional Learning

---

- Content/Team Collaboration
  - Review of unit 1 instruction, standards, assessment
  - Sharing and collaboration of new content areas
- Student Success
  - Data warehouse from Department of Education
  - Allows us to see academic, attendance, and behavior data
- Lexia
  - Core 5 and Power Up
    - Online literacy instruction for students at their level
    - Instructional materials for teachers
- Schoology
  - Learning management system
- BenQ
  - Classroom interactive monitors



# Intermediate Environments

- Student Supports for Safety
  - Soft start 50% of students, first two weeks
  - Directional signs
  - Student desk spacing
  - Spacing of students in the lunchroom
  - Direct teaching of student expectations

# Intermediate Environments





# Intermediate Environments

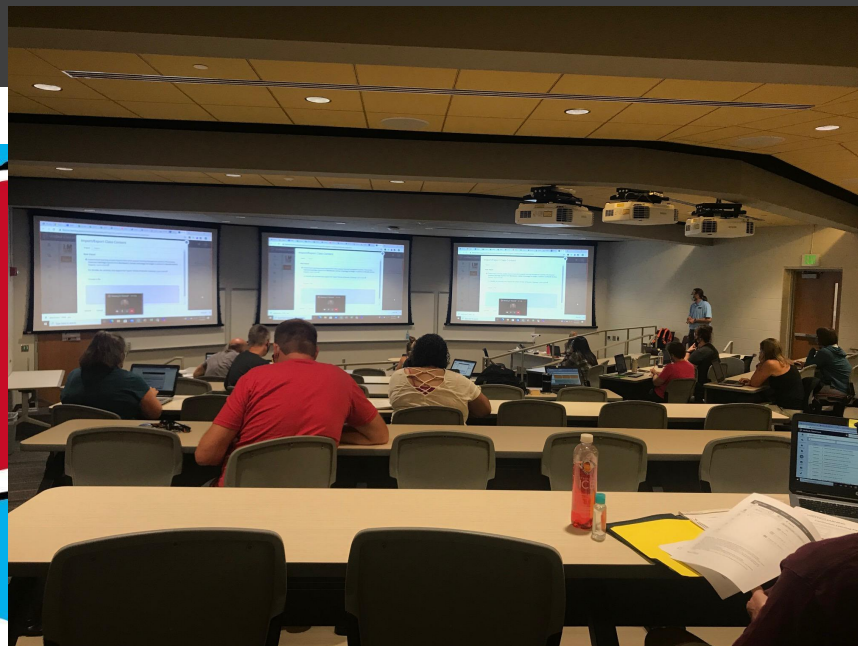
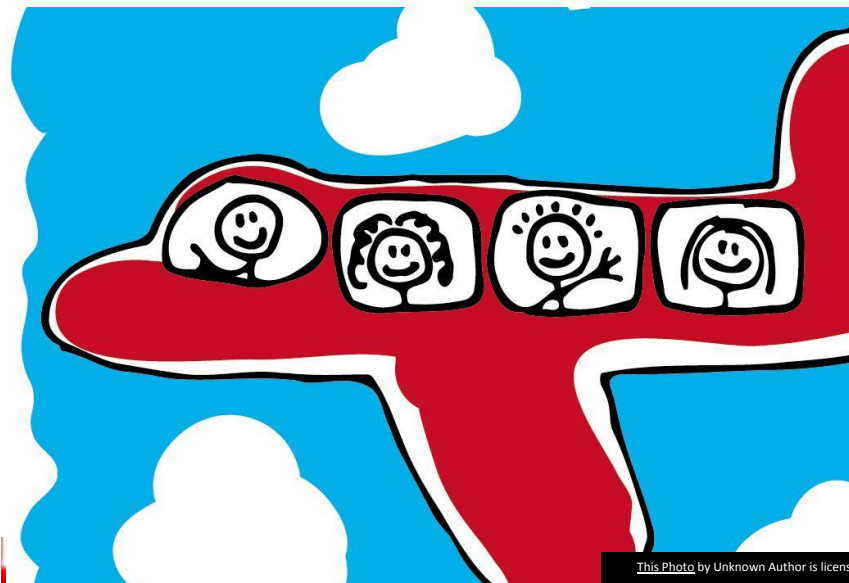


# Middle School Academic Priorities

- Grade level content is academic priority
  - Utilize screening/diagnostic data
  - Identification of critical standards missed 2019-2020 (May 2020)
  - Incorporate those standards into grade level learning for 2020-2021



# Middle School Professional Learning



This Photo by Unknown Author is licensed under [CC BY-NC-ND](https://creativecommons.org/licenses/by-nc-nd/4.0/)



# Middle School Environments

---

- Student Supports of Safety
  - First quarter
    - 50% online and 50% face to face
    - Alternate days
    - New instruction each day
  - Directional Signs
  - Student spacing in classrooms
  - Spacing of students in the lunchroom
  - Direct teaching of student expectations

High School

# High School Academic Priorities

- LMHS teachers provide 192 different courses across 17 departments for transcript credit
- Course credit is awarded as students demonstrate proficiency on course standards
- Students will work for and achieve proficiency on priority standards as before



# High School Professional Learning



[2020-2021 LMHS PD Schedule](#)

- COVID information and planning discussions
- Best practices in Online Teaching and Learning
- Schoology, Universal Design, Digital, Engagement Strategies, Management Applications
- Standards-Based Learning, Standards-Referenced Grading
- Trauma-Sensitive Classrooms, Unconscious Bias, Community Circles
- Inter-Department, Department, and Course-level work
- 30 hours of individual teacher prep time

# High School Professional Learning



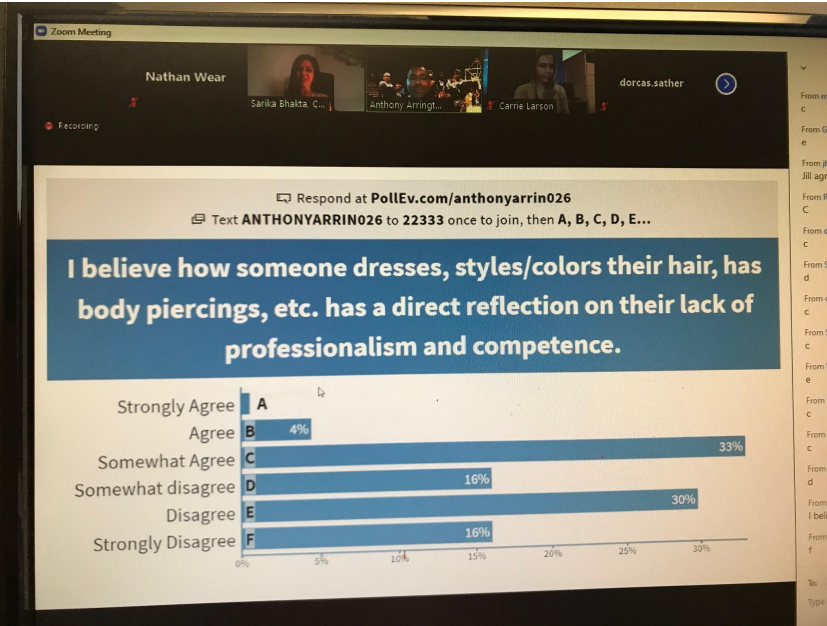
# High School Environment

- Focus on student and staff safety
  - Student density, patterns of movement, classroom procedures, structured release time
- A/B continuous learning
- Daily schedule adjusted to accommodate synchronous learning and increased personal support (RTI and social/emotional) time
- Synchronous 2-channel teaching (face-to-face and virtual) or asynchronous teaching and learning provided to students in all courses





**District**



# K-12 Professional Learning

- Trauma Sensitive Classroom
- Bias/Micro-inequities, micro-aggressions training
- Community Circles

