

RESOLUTION OF INTENT

Director _____ introduced and caused to be read the Resolution hereinafter set out and moved its adoption; seconded by Director _____; after due consideration by the Board, the President put the question upon the adoption of said Resolution and, the results of the roll call vote were:

Aye _____
DIRECTORS

Nay _____
DIRECTORS

Whereupon the President declared said Resolution duly adopted as follows:

RESOLUTION

WHEREAS the Board deems it necessary and desirable to approve an Easement for Sanitary Sewer Facilities for real estate upon which the Linn Mar Community School District Oak Ridge Middle School is located, 4901 Alburnett Road, Marion, IA 52302, Marion, Linn County, Iowa (“Property”) and legally described as:

See Attached Exhibit A

WHEREAS the Board wishes to set forth its proposal specifying its intent to approve and grant an Easement for Sanitary Sewer Facilities to the City of Marion, Linn County, Iowa;

NOW, THEREFORE, be it resolved by the Board of Directors of the Linn Mar Community School District, State of Iowa, as follows:

The Board of Directors of the Linn Mar Community School District intends to approve an Easement for Sanitary Sewer Facilities located on the Linn Mar Community School District Oak Ridge Middle School grounds, legally described above, for One Dollar (\$1.00).

BE IT FURTHER RESOLVED by the Board of Directors of the Linn Mar Community School District, State of Iowa, as follows:

The Board of Directors of the Linn Mar Community School District, State of Iowa, shall hold a public hearing to consider its resolution to approve an Easement for Sanitary Sewer Facilities for the Property on May 10, 2021. The Board Secretary is hereby directed to cause publication of the time and place of the public hearing at least once not less than ten days but not more than twenty days prior to the date of the hearing in a newspaper of general circulation in the District. After the public hearing, the Board will adopt a resolution to approve the Easement for Sanitary Sewer Facilities for the Property.

Passed and approved: _____, 2021

President, Board of Directors

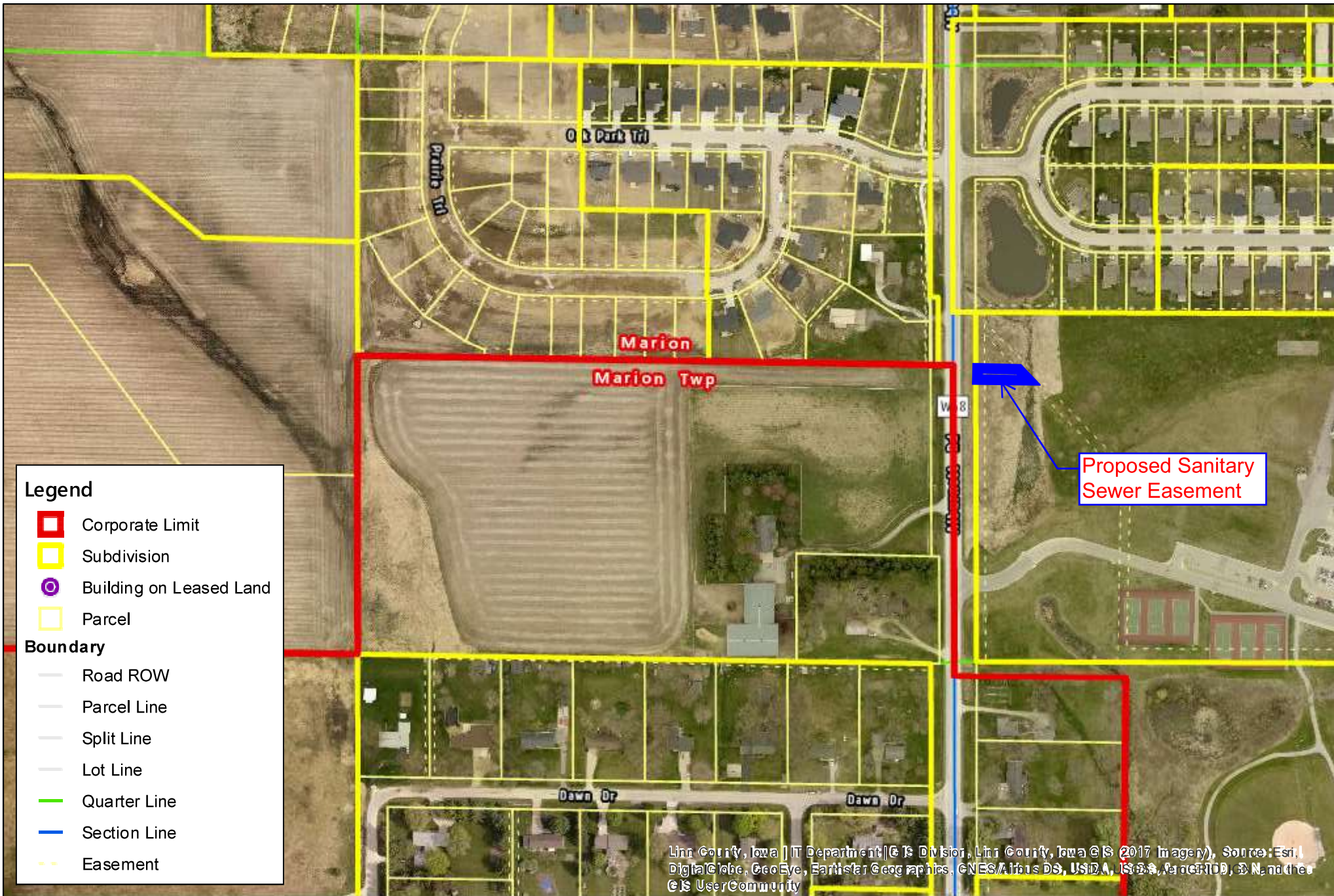
Attest:

Secretary, Board of Directors

EXHIBIT A

That part of Lot 1, Linn Mar II Addition to Marion, Linn County, Iowa described as follows:

Beginning at the Northwest corner of Lot 1, Linn Mar II Addition to Marion, Iowa; thence South $1^{\circ} 22' 03''$ East 119.97 feet along the West line of said Lot 1; thence North $89^{\circ} 38' 45''$ East 72.41 feet to the Westerly line of an existing sanitary sewer easement; thence South $45^{\circ} 12' 40''$ East 42.32 feet along said Westerly line; thence South $89^{\circ} 38' 45''$ West 101.73 feet to the West line of said Lot 1; thence North $1^{\circ} 22' 03''$ West 30.00 feet along said West line to the point of beginning, containing 0.06 acres.



Legend

- Corporate Limit
- Subdivision
- Building on Leased Land
- Parcel

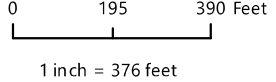
Boundary

- Road ROW
- Parcel Line
- Split Line
- Lot Line
- Quarter Line
- Section Line
- Easement

Proposed Sanitary Sewer Easement

Linn County, Iowa | IT Department | GIS Division, Linn County, Iowa GIS (2017 Imagery), Source: Esri, DigitalGlobe, GeoEye, Earthstar Geographics, CNES/Airbus DS, USDA, USGS, AeroGRID, IGN, and the GIS UserCommunity

Linn County, Iowa
 Linn County, Iowa Land Records
 Date Printed: 11/29/2018 11:28:08 AM



© Linn County, Iowa
 Linn County makes no warranties, expressed or implied, including without limitation, any warranties of merchantability or fitness for a particular purpose. In no event shall Linn County be liable for any consequential or incidental damages caused by the use of this map.
 Linn County GIS Division
 1740 26th Ave SW
 Cedar Rapids, IA 52404
 (319) 892-5250

