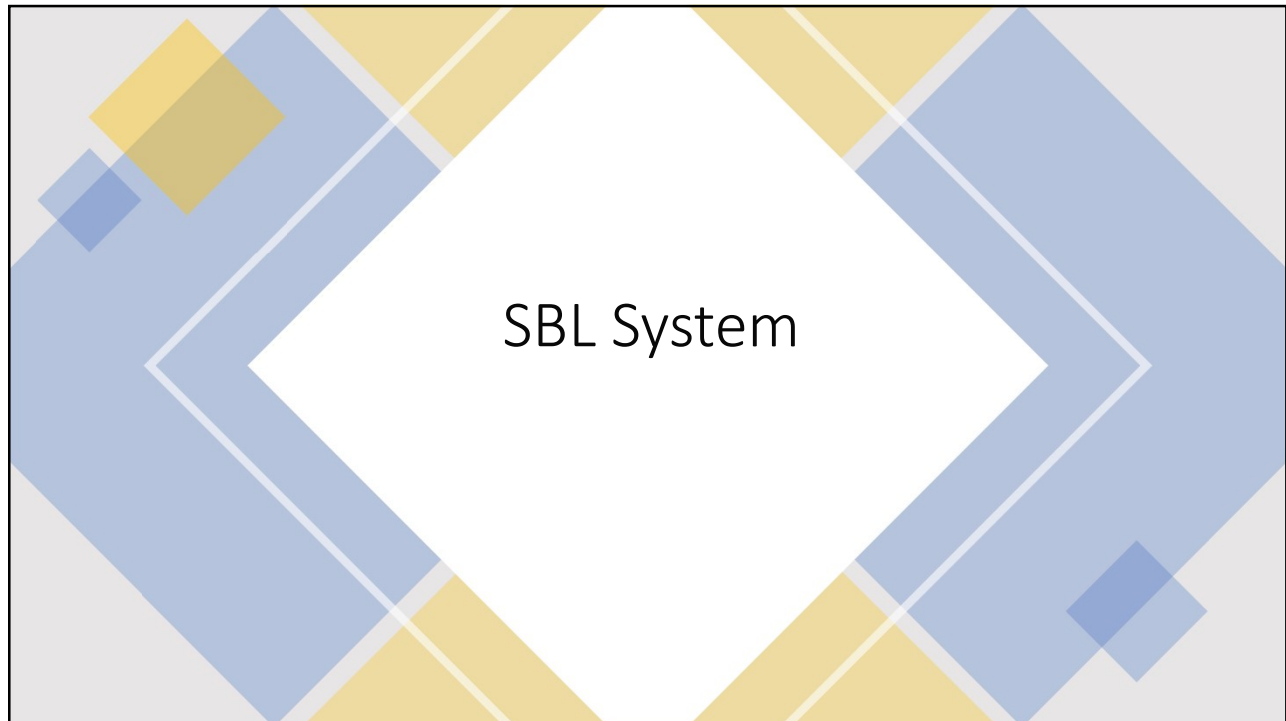




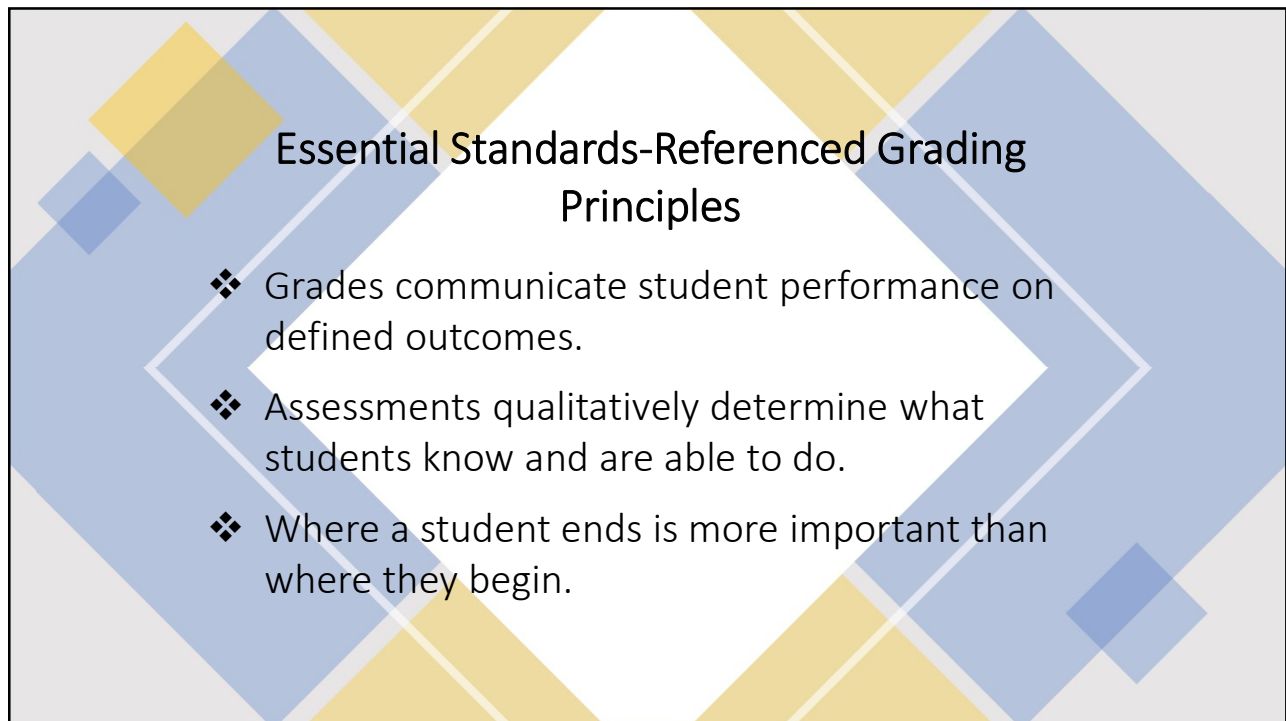
1



2



3



4

Learning

5

Curriculum

maps provide a visual layout of each subject's standards and the resources used to address those standards in the classroom

Course #	MAT285 & MAT265B	Teacher	Kuper, Rodriguez, Pomeroy, Handke
Course Name	ALGEBRA 2A & ALGEBRA 2A BLENDED	Grade	Grades 9-12
Unit or Month	Ch. 2 Linear Relations and Functions	Date	2019-2020
Content Description			
Students will represent relations and functions. Students will graph linear equations and inequalities in two variables. Students will write linear equations and inequalities in two variables.			
Unit Priority Standards			
I.	H-MT-FIF-C117-D1 (A2 CED-04) Understand that a function from one set (called the domain) to another set (called the range) assigns to each element of the domain exactly one element of the range. If f is a function and x is an element of its domain, then $f(x)$ denotes the output of f corresponding to the input x . The graph of f is the graph of the equation $y = f(x)$.		
ii.	H-MT-SID-C143-D6 Represent constraints by equations or inequalities, and by systems of equations and/or inequalities, and interpret solutions as viable or nonviable options in a modeling context.		
iii.	H-MT-SID-C144-D8 Compute (using technology) and interpret the correlation coefficient of a linear fit.		
Specific Content Objectives		Iowa Core Standards	
Represent relations and functions.		H-MT-FBF-C120-D1: Write a function that describes a relationship between two quantities.	
		H-MT-FIF-C117-D1: Understand that a function from one set (called the domain) to another set (called the range) assigns to each element of the domain exactly one element of the range. If f is a function and x is an element of its domain, then $f(x)$ denotes the output of f corresponding to the input x . The graph of f is the graph of the equation $y = f(x)$.	
		H-MT-FIF-C117-D2: Use function notation, evaluate functions for inputs in their domains, and interpret statements that use function notation in terms of a context.	
		H-MT-FIF-C118-D5: Relate the domain of a function to its graph and, where applicable, to the quantitative relationship it describes.	
		H-MT-FIF-C119-D8: Write a function defined by an expression in different but equivalent forms to reveal and explain different properties of the function.	
Find slope and rate of change.		H-MT-SID-C144-D7: Interpret the slope (rate of change) and the intercept (constant term) of a linear model in the context of the data.	
Graph equations of lines.		H-MT-ACE-D112-D2: Create equations in two or more variables to represent relationships between quantities; graph equations on coordinate axes with labels and scales.	
		****H-MT-FIF-C118-D5: Relate the domain of a function to its graph and, where applicable, to the quantitative relationship it describes.	
		****H-MT-FIF-C119-D7: Graph functions expressed symbolically and show key features of the graph, by hand in simple cases and using technology for more complicated cases.	
		****H-MT-ARE-C116-D10: Understand that the graph of an equation in two variables is the set of all its solutions plotted in the coordinate plane, often forming a curve (which could be a line).	

LMHS Curriculum Maps

6

The diagram features a large white diamond shape on a gray background with geometric patterns. Inside the diamond, the text "Critical Questions" is centered. To the right of the diamond is a vertical gray bar containing five colored icons and their corresponding labels and descriptions:

- Learning Target** (Red icon with gears): What you are expected to know or be able to do at the end of a lesson/unit
- Learning** (Orange icon with a hand pointing to a document): Content that will provide information to help you meet the learning target.
- Check for Understanding** (Green icon with a checkmark): Let's see if we met the learning target. Do you need more support to get there or are you ready to move on?
- More Detail** (Purple icon with a magnifying glass): More information or information explained in a different way to help us meet the learning target.
- Enrichment** (Blue icon with a brain): We met the learning target, now let's expand on what we learned.

7

The diagram features a large white diamond shape on a gray background with geometric patterns. Inside the diamond, the text "Assessing Student Learning" is centered. To the right of the diamond is a vertical white bar containing the Linn-Mar High School logo and a red button. To the right of the white bar is a dark gray vertical bar with the text "2020-2021".

Assessing Student Learning

LM LINN-MAR High School

2020-2021

Assessing Student Learning

8

Grades communicate learning

Score	Level	Description
4	Exemplary	Student shows in-depth inferences and application in class as taught by the teacher in addition to meeting the standard, such as explaining or demonstrating connections between ideas.
3.5		In addition to score 3.0 performance, in-depth inferences and application with partial success.
3	Proficient	Student is able to independently use, apply, and/or demonstrate the standard but may include errors that don't impact demonstration of the standard.
2.5		No major errors or omissions regarding 2.0 content and partial knowledge of the 3.0 content.
2	Approaching	Student can demonstrate foundational processes of the standard.
1.5		No major errors or omissions regarding 1.0 content and partial knowledge of the 2.0 content.
1	Beginning	Student recalls vocabulary and/or understands simpler ideas, skills, and concepts.
INC/NC	Incomplete	No evidence demonstrating knowledge of the standard.

9

Standard

A statement of what a student is expected to know and be able to do by the end of a course of study.

G-SRT.C.8.a - Apply the Pythagorean Theorem.

G-SRT.C.8.b - Apply the Pythagorean Theorem Converse.

G-SRT.C.6 - Use special right triangle theorems to solve right triangles.

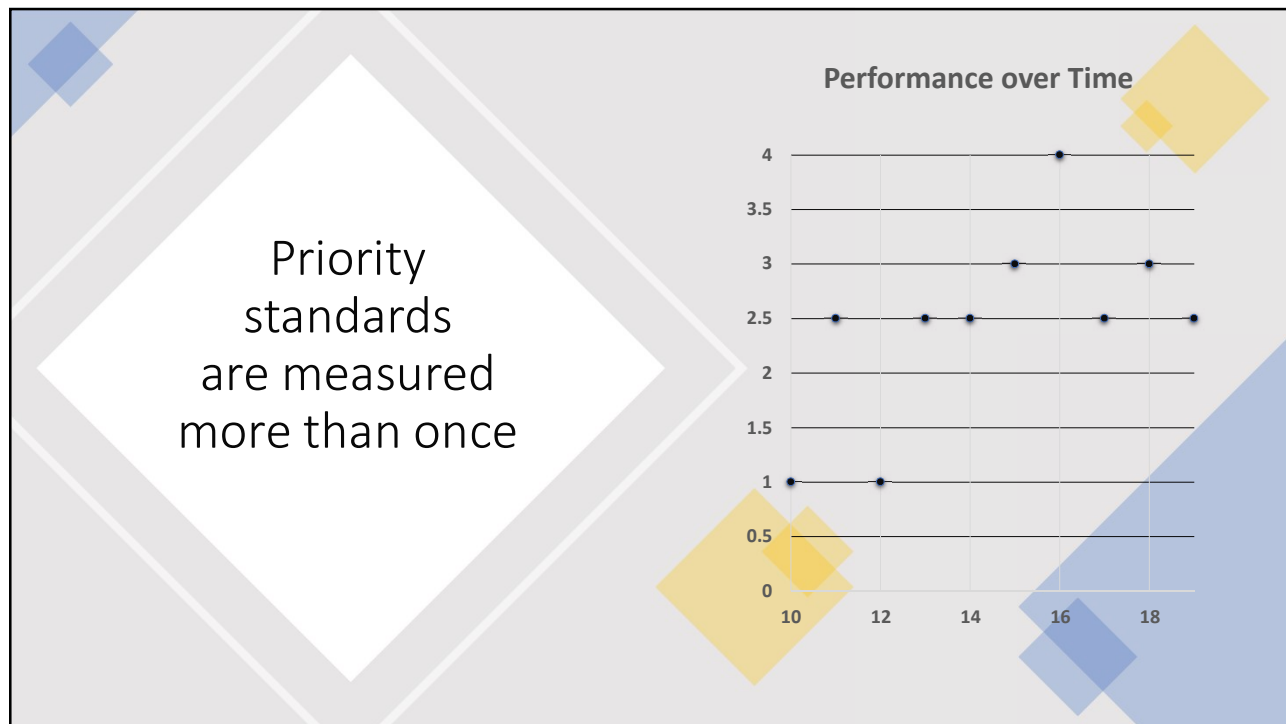
G-SRT.C.8.c - Use trigonometric ratios to solve right triangles.

Priority Standard

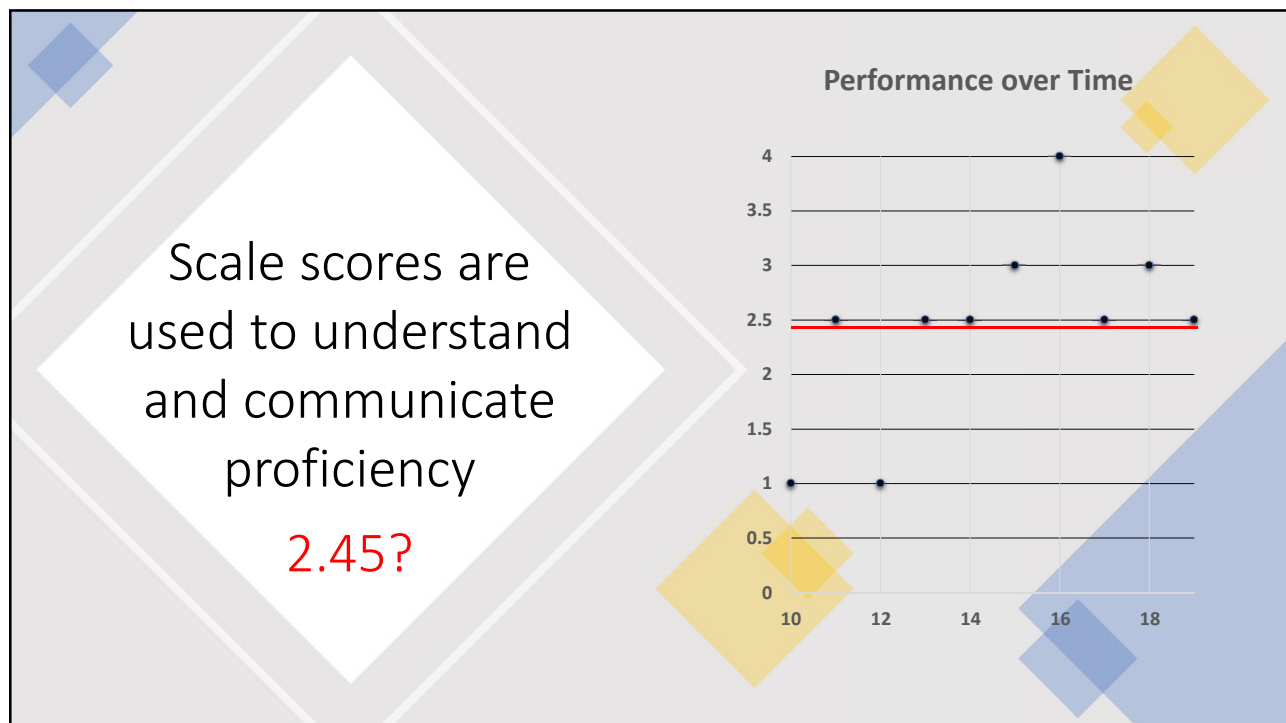
A statement of essential learning of a course of study.

MAT.G.6 - Apply properties of right triangles and trigonometry.

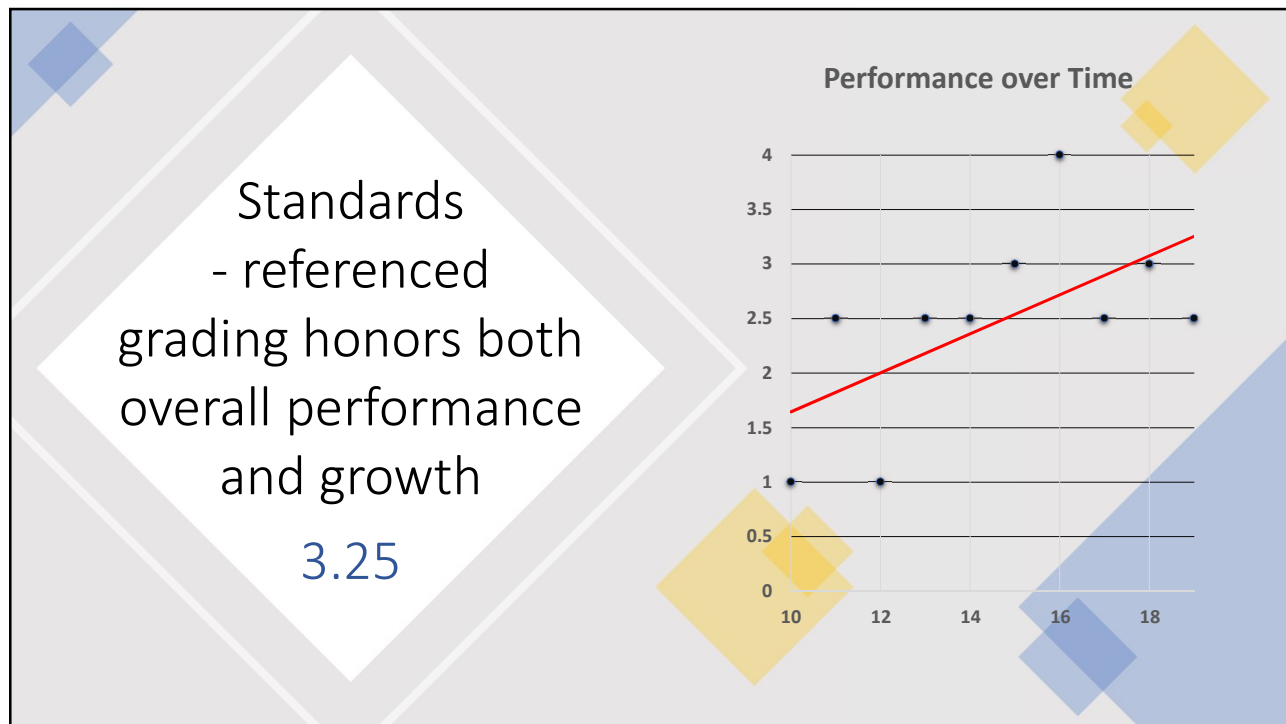
10



11



12

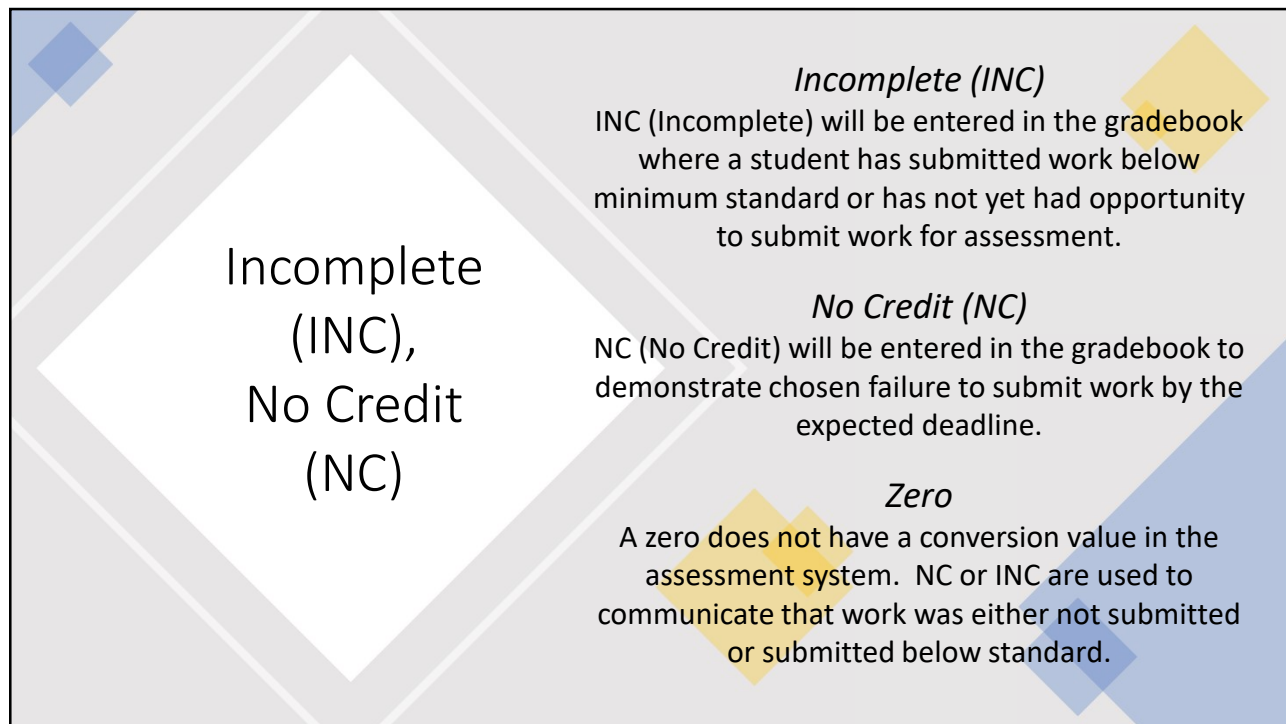


13

Consistency,
Equity

- Grading practices will be consistent across disciplines.
- Course letter grades will have consistent meaning and value across disciplines.
- Course letter grades will be determined similarly across disciplines.
- Course letter grades will be calculated identically for all sections of the same course.
- Course credit will have consistent meaning and value across disciplines.

14



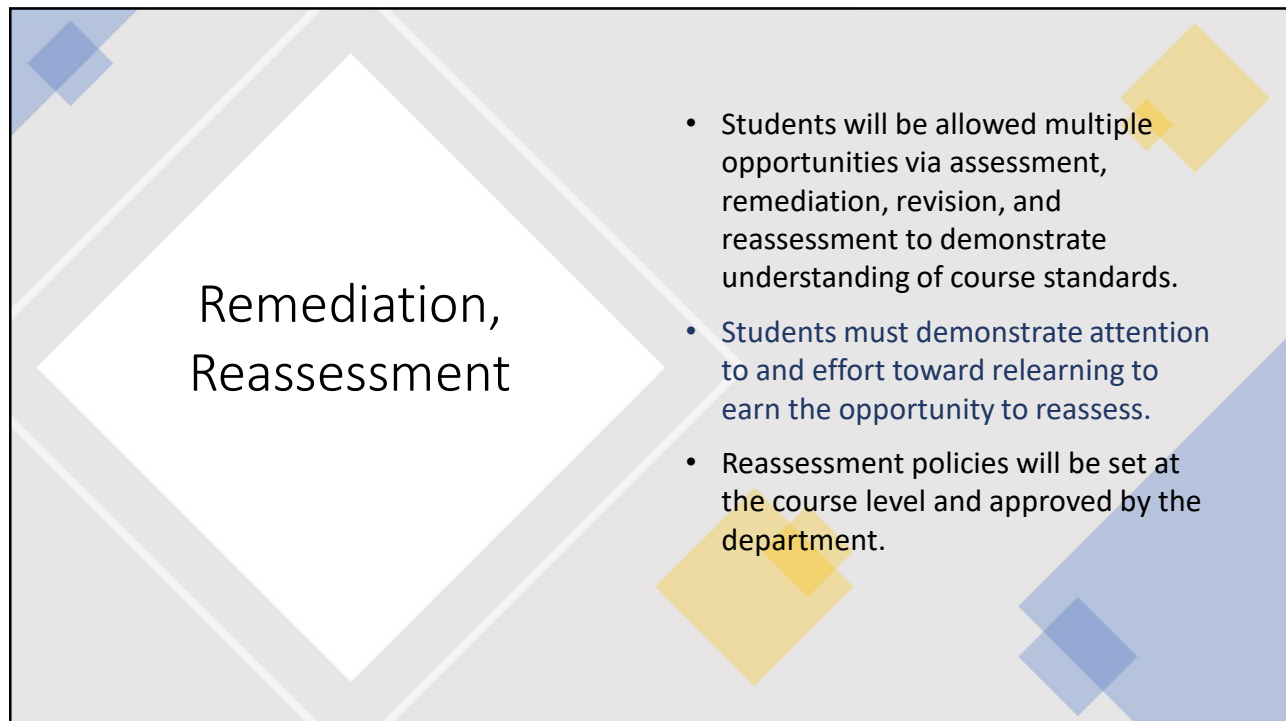
Incomplete (INC), No Credit (NC)

Incomplete (INC)
INC (Incomplete) will be entered in the gradebook where a student has submitted work below minimum standard or has not yet had opportunity to submit work for assessment.

No Credit (NC)
NC (No Credit) will be entered in the gradebook to demonstrate chosen failure to submit work by the expected deadline.

Zero
A zero does not have a conversion value in the assessment system. NC or INC are used to communicate that work was either not submitted or submitted below standard.

15



Remediation, Reassessment

- Students will be allowed multiple opportunities via assessment, remediation, revision, and reassessment to demonstrate understanding of course standards.
- Students must demonstrate attention to and effort toward relearning to earn the opportunity to reassess.
- Reassessment policies will be set at the course level and approved by the department.

16

Calculations ... advise the grade

- Scale Scores are used to describe standard performance on artifacts
- **Artifact Scale Scores are converted to 0-100 scale**
- Scale Scores are processed using Mean, Median, Mode, Most Recent, etc. to determine overall Priority Standard scale score
- **Priority Standard Scale Scores are reported to students**
- Course Grade is determined using an average or weighted average of priority standard (0-100) scores
- Course Grade is determined directly from initial 0-100 converted values, no intermediate rounding or reconversion occurs

17

Scale score conversion

Scale Score	Traditional Score
4	100
3.5	95
3	90
2.5	85
2	75
1.5	65
1	60
INC/NC	INC

18



Calculation Example

Std 1	Std 2	Std 3	Std 4
1.5 = 65	3 = 90	2.5 = 85	2 = 75
2.5 = 85	3 = 90	3.5 = 95	2.5 = 85
3.5 = 95	3.5 = 95	4 = 100	3 = 90
---	---	---	---
81.67	91.67	93.33	83.33

$$(81.67 + 91.67 + 93.33 + 83.33) / 4 = 87.5$$

... or rounded ... 88% \rightarrow B+.

19

LMHS Transcript

Student: Gregory, Jonathan

Grade: 12

DOB: 1/15/2001

Gender: M

Gregory, Martha

11111 23rd Ave

Minnetonka, MN 55302

Official Transcript

March 2, 2020

Linn-Mar High School

3111 North 10th St

Marion, IA 52302

Tel: 319 447-3040

Fax: 319 447-3498

Course	Grade	Q1 SPR CR	Q2 SPR CR	Q3 SPR CR	Q4 SPR CR	Q1 SPR CR	Q2 SPR CR	Q3 SPR CR	Q4 SPR CR	Q1 SPR CR	Q2 SPR CR	Q3 SPR CR	Q4 SPR CR	Q5 SPR CR
16-17 Linn-Mar High School														
ADVANCED ENGLISH I	9	A	S	A						A	S			
FRENCH II	9					A	S							
FUNDAMENTALS OF LIFETIME	9													
FITNESS	9													
AGRICULTURE A & B	9					A	S							
NINTH GRADE BAND	9					A	S							
SOLE	9					A	S							
MARCHING BAND	9	A+	2.5											
GENERAL ENGLISH	9	A	S											
ADVANCED US HISTORY 9	9					A	S							
17-18 Linn-Mar High School														
ADVANCED ENGLISH I	10	A	S	A						A	S			
FRENCH II	10					A	S							
HEALTH I	10	A	S											
PRE-CALCULUS	10					C+	S			C+	S			
CONCERT CHOIR BELLA VOCE	10					A+	S							
MARCHING BAND	10	A+	2.5											
WRESTLING I	10													
AP WORLD HISTORY I	10					A	S							
AP WORLD HISTORY II	10													
18-19 Linn-Mar High School														
WORKPLACE INTERNSHIP	11	P	2.5											
GOVERNANCE	11									A+	S			
COMPOSITION I	11	A	S											
COMPOSITION II	11													
FRENCH IV	11					A	S							
LIFETIME FITNESS- FLEX AND	11													
NET I	11									P	2.5			
AP STATISTICS	11					A	S							
CONCERT CHOIR BELLA VOCE	11									A	S			
EARTH AND SPACE SCIENCE	11					A+	S			A+	S			
REINDEER	11													
INTRODUCTORY PSYCHOLOGY	11	A	S											
AP BIOLOGY	11									A	S			
19-20 Linn-Mar High School														
PERSONAL FINANCE	12					P	S							
PUBLIC	12	A+	S											
ACTED	12					A	S							
FRUITFUL I	12													
LIFETIME FITNESS- FLEX AND	12	P												

This transcript is unofficial unless signed by a school official.

20

LMHS standards-referenced grade report

Course/Teacher	Standard	Q1	Q2	S1	Q3	Q4	S2
ADVANCED ENGLISH III Dvorak, Chris	Write arguments to support claims in analysis of substantive topics	3.5	2.5				
	Cite strong textual evidence to support analysis of a text		3				
	Determine two or more themes of a text and analyze their development	2.5					
	Analyze impact of the author's choices to develop elements of a story		3				
	Demonstrate knowledge of 17th, 18th, 19th and 20th century American lit	3	2.5				
	Read & comprehend literature at 11th text complexity proficiently	3.5	3				
	Gather/assess sources; integrate information, follow citation format		2.5				
	Deliver quality job performance on time		3.5				
AP WORLD HISTORY 2 Borchers, Allison	Present supporting evidence to convey clear/distinct perspective	3					
	Demonstrates historical knowledge of each world history period.			3.5			
	Demonstrates effective learning behaviors.			3.5			
GENERAL BIOLOGY Sullivan, David	Uses Basic Essay Skills: Thesis, Evidence, & Context.			2			
	Explain how a cell maintains homeostasis			2.5			
	Model the role of P/CR in cycling carbon among Earth's spheres			3.5			
	Explain evidence for biomolecules consumption and production			2.5			
HEALTH I Hasken, Stephanie	Demonstrate productivity & accountability for work completion			4			
	Analyzes the influence of family, peers, culture, media on health			3			
	Demonstrates health enhancing behaviors to avoid/reduce health risks			3.5			
	Demonstrates how to use decision making skills to enhance health			4			
SPANISH III Reynolds, Lauren	Demonstrates how to access information and products to enhance health			3			
	Communicates verbally using appropriate level content (speaking)		3			3	
	Communicates in writing using appropriate level content (writing)		2.5			3	
	Interprets spoken language using appropriate level content (listening)		3.5			4	
	Interprets written language using appropriate level content (reading)		3.5			4	
	Demonstrates a cultural understanding (culture)		3.5				

Performance Scales

- 4=Advanced
- 3.5=High Proficient
- 3=Proficient
- 2.5=Proficient with Support
- 2=High Progressing
- 1.5=Low Progressing
- 1=Progressing with Support
- .5=Limited Success
- 0=Not Attempted

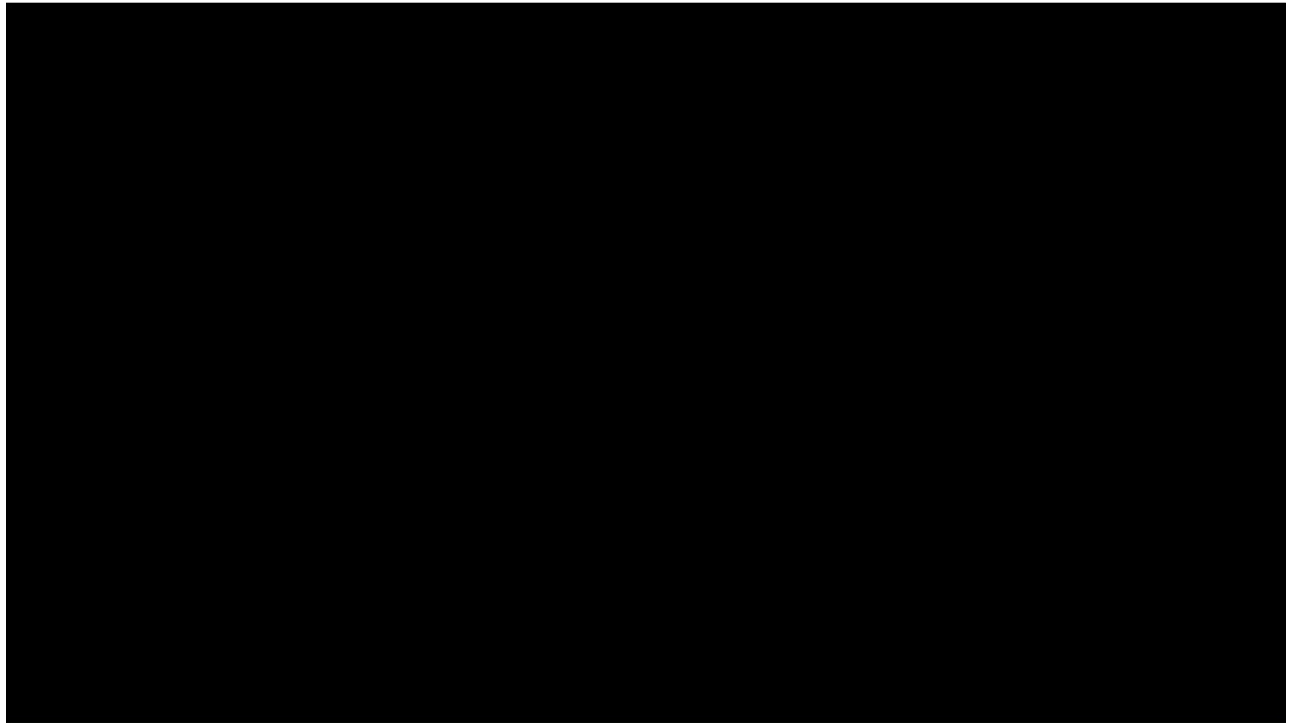
21



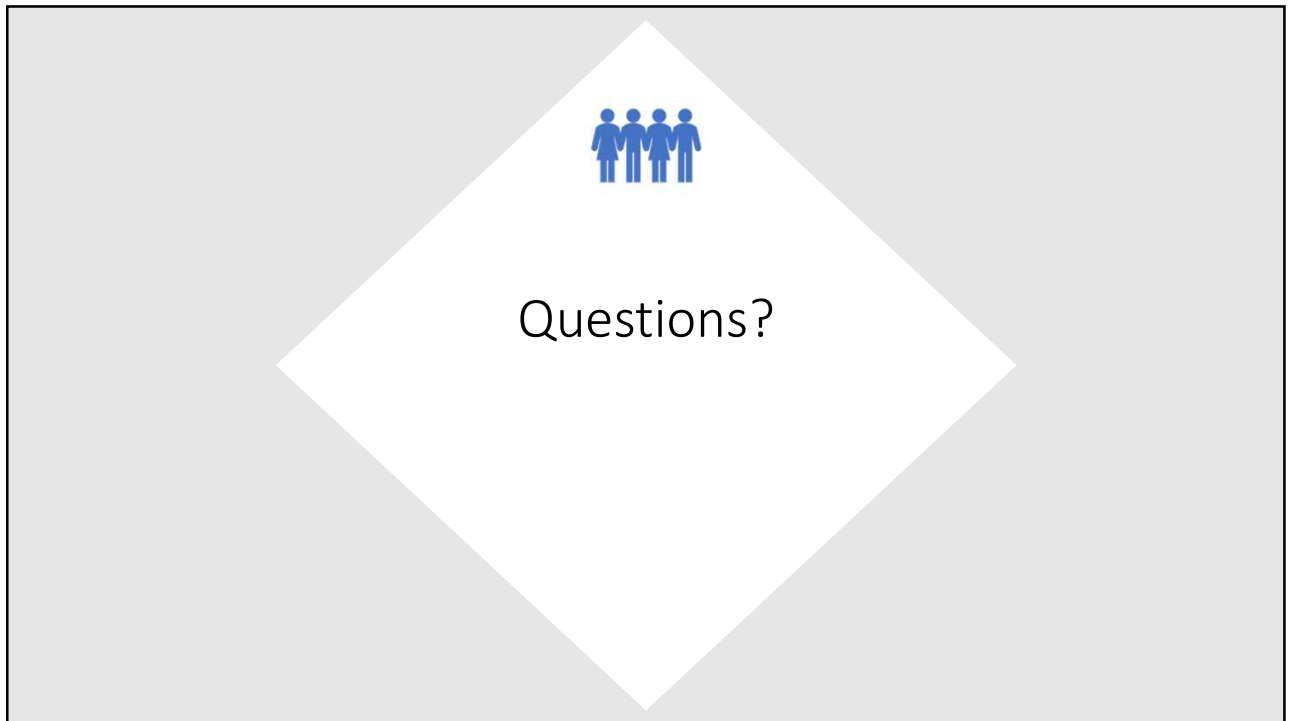
SBL Pilot Teacher Testimonial Video

40 courses
174 sections

22



23



24



Updates from the Cabinet

March 9, 2020

Cabinet Members: Superintendent Bisgard, Assoc. Superintendent Wear, Mrs. Karla Christian (HR), Mr. JT Anderson (CFO), Mrs. Leisa Breitfelder (Student Services), and Mrs. Jeri Ramos (Tech)

Policy Committee: The committee met on February 26th to review several suggested language updates from the Iowa Association of School Boards, the first half of the 400 Series (*Staff/Personnel*), and the 100 Series (*School District*). Updates to the following policies are being recommended to the board for approval:

- 202.7 – School Board Conflict of Interest
- 400.1 – Educational and Employment Equity
- 400.2 – Equal Employment Opportunity
- 400.4 – Limitations to Employment References – *New Policy*
- 401.15 – Child Abuse Reporting by Licensed Personnel
- 101.1 – Educational Philosophy of the District
- 101.2 – Curriculum Development – *Delete-duplicate policy*
- 602.10 – Curriculum Development – *Merge wording from deleted 101.2*
- 101.3 – Quality of Instruction – *Delete-duplicate policy*
- 101.4 – Assessments – *Delete-duplicate policy*
- 605.2 – Testing Program – *Merge wording from deleted 101.4*
- 102.1 – Educational Objectives for Students – *Moving to 600 Series*
- 103.1 – Long-Range Needs Assessment

FY2021 Certified Budget: Linn-Mar's fiscal year 2021 proposed certified budget is based on a 2.30% SSA growth rate and a certified budget enrollment of 7,676 students, which is an increase of 119 students from the previous year. One of the main purposes of the certified budget is to establish a maximum tax rate for the district. For FY2021, the district is proposing a tax rate of \$18.01 per \$1,000 of valuation, which is the same as last year. A public hearing and final approval of the FY2021 certified budget is set for April 6th. Iowa law requires the budget to be approved and filed with the Department of Management by April 15th.

Finance/Audit Committee: The committee met on March 5th and reviewed the following topics:

- The district received the following bids for the Bowman Woods roofing project and recommends awarding the bid to D.C. Taylor Co., as the lowest, responsive bidder.
 - D.C. Taylor Company \$988,576
 - Dryspace Inc. \$1,411,248
- The district received the following bids for the Bowman Woods media center project and recommends awarding the bid to Peak Construction, as the lowest, responsive bidder.
 - Peak Construction \$147,000
 - Kleiman Construction \$173,874
- The district received the following bids for the Indian Creek renovation project and recommends awarding the bid to Garling Construction, as the lowest, responsive bidder.
 - Garling Construction \$479,000
 - Kleiman Construction \$501,296
 - Tricon Construction \$508,000
 - Unzeitig Construction \$508,600

- The district received the following bids for the Wilkins renovation project and recommends awarding the bid to Tricon Construction, as the lowest, responsive bidder.

○ Garling Construction	\$839,000
○ Kleiman Construction	\$869,755
○ Tricon Construction	\$823,000
○ Unzeitig Construction	\$851,000
- Reviewed the current status of negative lunch accounts (totaling \$26,700.70) for current enrolled students as of 2/20/20. It was noted that this negative balance has more than doubled in a one-year period.
- Discussed the proposed fiscal year 2021 certified budget. *See comments above.*
- Noted the upcoming public hearing and resolution for the Instructional Support Levy extension.
- Noted the upcoming public hearing and resolution for the \$15 million SAVE bond issuance.
- The committee was informed that a two-year agreement was reached with SEIU, with the first year total package cost computed at 2.38%.

District Achievements & Honors

Choral Honors: Congratulations to LMHS Bella Voce and Conductor Trent Buglewicz for their recent performance at the American Choral Directors Association Central/North Central Convention.

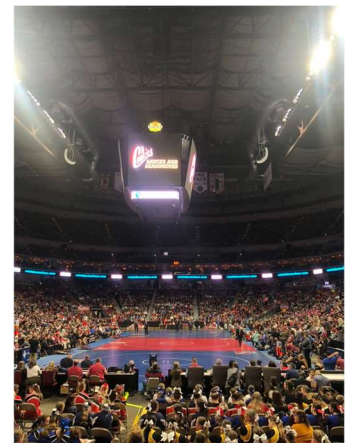
Community Outreach Special Mention: Thank you to all the organizers and classrooms that participated in the Food February challenge and helped raise \$1,153.22 in just one week to support the LMHS Food Pantry!

Boys Swimming Honors: Congratulations to Boys Swimming...all of the members who made it to State also made the All-Metro Team and Nick Cavanah was named Metro Athlete of the Year! The coaches also received the honor of Coaches of the Year!

All-State Awards: Nick Cavanah was named to the All-Academic State Team and to the All-State Second Team in the 100 butterfly and 100 backstroke, Aiden Carstensen was named to All-State First Team in the 100 backstroke, and Cooper Callahan was named to the All-State Second Team in the 500 freestyle. Cooper Callahan also received honorable mention in the 200 freestyle and Aiden Carstensen received an honorable mention in the 200 individual medley.

State Wrestling Honors: Congratulations to the Wrestling Team for placing 5th in the 3A Class at State, for leading all area teams with 6 medalists, and for being the only metro-area team in the top 10! Brandon O'Brien placed second at 106, Tate Naaktgeboren placed second at 160, Ryan Plummer placed second at 170, Bryce Parke placed 5th at 126, Abass Kemokai placed 8th at 152, and Luke Gaffney placed 8th at 220.

Show Choir Honors: Congratulations to Hi-Style for taking first place during the Hastings Swingin' on the River Competition in Hastings, Minnesota! In-Step placed second in the Mixed Prep Group Division, 10th Street took first place and best choreography in the Varsity Division, and Kira Kanz was named best soloist in the Prep Division.





All-State Speech Honors: Congratulations to Ruthie Gustason (*Pictured at the left accepting the group's award in the photo*) and the cast of *Wit* for being featured at the All-State Speech Festival.

Girls Basketball Honor: Congratulations to Sophomore Alexis Beier for being named to the All-Conference First Team!

Echo Hill Community Outreach: Kudos to the fourth grade students at Echo Hill Elementary for making and donating 61 blankets to Project Linus!

Middle School Band Honor: Congratulations to the Excelsior Middle School 6th Grade Band for being selected to perform at the Iowa Bandmasters Association 2020 Conference in the Elementary/Beginner Band Ensemble category. This is the highest achievement a band can receive!



Bowling Honors: Congratulations to Marissa Bills for being named to the All-Conference and All-Metro Bowling Teams, to Tesla Baker and Kayleann Simms for receiving Honorable Mention All-Conference and All-Metro, and to Josh Prowse and Noah Spinello for also receiving Honorable Mention All-Conference and All-Metro!

Contest Speech Honors: Congratulations to Contest Speech for moving onto the State competition! The team competed in Districts on February 28th in 28 contests, and 24 were selected to move onto State on March 14th in Grinnell. Individual ratings are below!

- **Division I Ratings:**

- Ruthie Gustason (Acting and Poetry)
- Adelynn Heitzman (Storytelling & Public Address)
- Ollie Kress (Literary Program & Solo Musical Theatre)
- Ian McKinney (Spontaneous & Radio)
- Lia Scharnau (After Dinner & Poetry)
- Katie Stoddard (Solo Musical Theatre)
- Jeany Toingar (Original Oratory & Spontaneous)
- Isabella Albright (Storytelling)
- Sam Alexman (Literary Program)
- Arianna Elmer (Radio)
- Hannah Huffman (Acting)
- Maya Neymeyer (Prose)
- Amelia Robinson (Acting)
- Katie Stoddard (Storytelling)
- Evan Thomasson (Radio)
- Nicolas Weaver (Expository Address)
- Ashley Wernimont (Solo Musical Theatre)
- Savannah Zhou (Expository Address)

- **Division II Ratings:**

- Arianna Elmer (Poetry)
- Nathan Harriss (Improvisation & Acting)
- Sabyn Jones (Solo Musical Theatre)



March 2, 2020

Linn-Mar Community School District
ATTN: Mr. J.T. Anderson
2999 10th Street
Marion, Iowa 52302

RE: Wilkins Elementary Classroom Renovations
Bid Recommendation

Dear Mr. J.T. Anderson:

Four bids were received on February 26, 2020 for the above referenced project. We have reviewed the bids and have observed no irregularities. We recommend Linn-Mar Community School District consider the proposals and award the contract to Tricon General Construction based on their low bid of \$823,000. This award is subject to submittal of acceptable bonds and insurance. We are also enclosing a copy of the bid tabulation for your use.

Please contact our office of the award decision and we will proceed with obtaining the agreement, bonds and insurance.

We look forward to working with you and Tricon General Construction on this project. Please call our office if you have any questions or comments regarding the above project.

Sincerely,

SHIVE-HATTERY, INC.

A handwritten signature in black ink, appearing to read "Jeremy Weih". The signature is fluid and cursive, written over a light blue grid background.

Jeremy Weih
Project Manager

JSW/atf

Enc.



**LINN-MAR COMMUNITY SCHOOL DISTRICT
Wilkins Elementary School Renovations
1193930**

Bid Date: February 26, 2020

Time: 2:00 p.m. CST

Location: Linn-Mar Community School District
2999 North 10th Street
Marion, Iowa 52302

NAME AND ADDRESS OF GENERAL CONTRACTORS	Garling Construction 1120 11th Street Belle Plaine, Iowa 52208	Kleiman Construction 6205 Locust Road SW Cedar Rapids, Iowa 52404	Tricon General Construction 746 58th Avenue Ct SW Cedar Rapids, Iowa 52404	Unzeitg Construction 1619 F Avenue NE Cedar Rapids, Iowa 52405
REQUIRED DOCUMENTS	YES / NO	YES / NO	YES / NO	YES / NO
1. 5% Bid Security by Certified Check or Bid Bond	Yes	Yes	Yes	Yes
2. Targeted Small Business Form	Yes	Yes	Yes	Yes
3. Bidders Status Form	Yes	Yes	Yes	Yes
4. Receipt of Addendum No. 1	Yes	Yes	Yes	Yes
5. Receipt of Addendum No. 2	Yes	Yes	Yes	Yes
6. Receipt of Addendum No. 3	Yes	Yes	Yes	Yes
	PRICE	PRICE	PRICE	PRICE
BASE BID:	\$839,000.00	\$869,755.00	\$823,000.00	\$851,000.00



March 2, 2020

Linn-Mar Community School District
ATTN: Mr. J.T. Anderson
2999 10th Street
Marion, Iowa 52302

RE: Indian Creek Elementary Classroom Renovations
Bid Recommendations

Dear Mr. J.T. Anderson:

Four bids were received on February 27, 2020 for the above referenced project. We have reviewed the bids and have observed no irregularities. We recommend Linn-Mar Community School District consider the proposals and award the contract to Garling Construction based on their low bid of \$479,000. This award is subject to submittal of acceptable bonds and insurance. We are also enclosing a copy of the bid tabulation for your use.

Please contact our office of the award decision and we will proceed with obtaining the agreement, bonds and insurance.

We look forward to working with you and Garling Construction on this project. Please call our office if you have any questions or comments regarding the above project.

Sincerely,

SHIVE-HATTERY, INC.

A handwritten signature in black ink, appearing to read "Jeremy Weih". The signature is fluid and cursive, written over a light blue grid background.

Jeremy Weih
Project Manager

JSW/atf

Enc.



**LINN-MAR COMMUNITY SCHOOL DISTRICT
Indian Creek Elementary School Renovations
1193930**

Bid Date: February 27, 2020

Time: 2:00 p.m. CST

Location: Linn-Mar Community School District
2999 North 10th Street
Marion, Iowa 52302

NAME AND ADDRESS OF GENERAL CONTRACTORS	Garling Construction 1120 11th Street Belle Plaine, Iowa 52208	Kleiman Construction 6205 Locust Road SW Cedar Rapids, Iowa 52404	Tricon General Construction 746 58th Avenue Ct. SW Cedar Rapids, Iowa 52404	Unzeitig Construction 1619 F Avenue NE Cedar Rapids, Iowa 52402
REQUIRED DOCUMENTS	YES / NO	YES / NO	YES / NO	YES / NO
1. 5% Bid Security by Certified Check or Bid Bond	YES	YES	YES	YES
2. Targeted Small Business Form	YES	YES	YES	YES
3. Bidders Status Form	YES	YES	YES	YES
4. Receipt of Addendum No. 1	YES	YES	YES	YES
5. Receipt of Addendum No. 2	YES	YES	YES	YES
6. Receipt of Addendum No. 3	YES	YES	YES	YES
	PRICE	PRICE	PRICE	PRICE
BASE BID:	\$479,000.00	\$501,296.00	\$508,000.00	\$508,600.00



February 27, 2020

JT Anderson
Linn-Mar Community School District
2999 N 10th Street
Marion, IA 52302

RE: 2020 Linn-Mar Roof Improvements
Bowman Woods Elementary School

Dear JT:

Two bids were received on February 26, 2020 for the above referenced project.

We have reviewed the bids that were provided to us. There were no irregularities with the bid submitted by the low bidder, DC Taylor Co. for the items stated below. We recommend that the Linn-Mar Community School District proceed with your award process for the Base Bid 1 & Base Bid 2 as listed below. This award may be subject to submittal of acceptable bonds, insurance and other requirements of the Linn-Mar Community School District. We are enclosing a copy of the bid tabulation for your use.

DC Taylor Co.:

BASE BID 1 – BOWMAN WOODS ELEMENTARY ROOF			
LEVELS B, D, E, J, K, M, N, & O		BASE BID 1	\$733,955.00
Wood deck repair or replacement	Unit Cost of 250 SF @ \$11.20		\$ 2,688.00
		TOTAL BASE BID 1	\$736,643.00
BASE BID 2 – WOOD DECK REPAIR OR REPLACEMENT		TOTAL BASE BID 2	\$251,933.00
		PROJECT TOTAL	\$988,576.00

Please contact our office of the award decision and we will proceed with obtaining the agreement, bonds and insurance.

We look forward to working with you and Linn-Mar Community School District on this project. Please call our office if you have any questions or comments regarding the above project.

Sincerely,

SHIVE-HATTERY, INC.

Natalie Oppedal
Architect

Enclosure: Bid Tabulation

Copy: Steve Nelson, LM
Stephen Stewart, S-H

Project #2192710



TABULATION OF BIDS

Owner: Linn-Mar Community School District				2/26/2020			
Project Name: 2020 Linn-Mar Roof Improvements				Linn-Mar Community School District			
S-H Project #: 2192710				Learning Resource Center			
				2999 N 10th Street, Marion, IA			
				1 of 1			

			D. C. Taylor Company		Dryspace, Inc.	
NAME AND ADDRESS OF BIDDER			312 29th Street NE Cedar Rapids, IA 52402		707 66th Avenue SW Cedar Rapids, IA 52404	
Bid Security - 5%			Yes		Yes	
Statements or evidence of bidders qualifications 00 4100.01			Yes		Yes	
Authorization to Transact Business Worksheet 00 4100.02			Yes		Yes	
Non-Collusion Affidavit 00 4100.03			Yes		Yes	
Targeted Small Business Forms 00 4100.04			Yes		Yes	
Addendum 1 - 2/7/20 - 11 pages			Yes		Yes	
Addendum 2 - 2/13/20 - 1 page			Yes		Yes	
Addendum 3 - 2/21/20 - 6 pages			Yes		Yes	

ITEM	DESCRIPTION	QUANTITY	UNIT PRICE	EXTENDED	UNIT PRICE	EXTENDED
BASE BID 1 - BOOWMAN WOODS REROOFING LEVELS B, D, E, J, K, M, N, & O						
1	Complete tear-off and replacement of the existing roof with a new PVC adhered roof system.	Lump Sum	Lump Sum	\$ 733,955.00	Lump Sum	\$ 1,239,341.00
2	Wood deck repair or replacement	250/SF	\$ 11.20 / SF	\$ 2,688.00	\$10.00 / SF	\$ 2,500.00
TOTAL BASE BID 1			\$	736,643.00	\$	1,241,841.00
BASE BID 2 - Bowman Woods R, S And U						
1	Soffit, gutter and downspouts.	Lump Sum	Lump Sum	\$ 251,933.00	Lump Sum	\$ 169,407.00
TOTAL BASE BID 2			\$	251,933.00	\$	169,407.00
TOTAL PROJECT			\$	988,576.00	\$	1,411,248.00





March 2, 2020

Linn-Mar Community School District
ATTN: Mr. J.T. Anderson
2999 10th Street
Marion, Iowa 52302

RE: Bowman Woods Elementary Media Center Renovations
Quote Recommendation

Dear Mr. J.T. Anderson:

Two quotes were received on February 21, 2020 for the above referenced project. We have reviewed the quotes and have observed no irregularities. We recommend the Linn-Mar Community School District consider the quotes and award the contract to Peak Construction based on their low bid of \$147,000. This award is subject to submittal of acceptable bonds and insurance. We are also enclosing a copy of the bid tabulation for your use.

Please contact our office of the award decision and we will proceed with obtaining the agreement, bonds and insurance.

We look forward to working with you and Peak Construction on this project. Please call our office if you have any questions or comments regarding the above project.

Sincerely,

SHIVE-HATTERY, INC.

A handwritten signature in black ink, appearing to read "Jeremy Weih". The signature is fluid and cursive, with a large initial "J" and "W".

Jeremy Weih
Project Manager

JSW/atf

Enc.



**LINN-MAR COMMUNITY SCHOOL DISTRICT
Bowman Woods Elementary Media Center Renovations
1193930**

Bid Date: February 21, 2020

Time: 2:00 p.m. CST

Location: Linn-Mar Community School District
2999 North 10th Street
Marion, Iowa 52302

NAME AND ADDRESS OF GENERAL CONTRACTORS	Peak Construction 660 Liberty Way Unit C North Liberty, Iowa 52317	Kleiman Construction 6205 Locust Road SW Cedar Rapids, Iowa 52404			
REQUIRED DOCUMENTS	YES / NO	YES / NO	YES / NO	YES / NO	YES / NO
1. Receipt of Addendum No. 1	Yes	Yes			
2. Receipt of Addendum No. 2	Yes	Yes			
	PRICE	PRICE	PRICE	PRICE	PRICE
QUOTE:	\$147,000.00	\$173,874.00			

ITEMS TO INCLUDE ON AGENDA

LINN-MAR COMMUNITY SCHOOL DISTRICT

Approximately \$15,000,000 School Infrastructure Sales, Services and Use Tax Revenue Bonds

- Hearing on the Proposed Issuance of Approximately \$15,000,000 School Infrastructure Sales, Services and Use Tax Revenue Bonds
- Resolution Supporting the Proposed Issuance of Approximately \$15,000,000 School Infrastructure Sales, Services and Use Tax Revenue Bonds

**NOTICE MUST BE GIVEN PURSUANT TO IOWA CODE CHAPTER 21
AND THE LOCAL RULES OF THE SCHOOL DISTRICT.**

March 9, 2020

The Board of Directors of the Linn-Mar Community School District, State of Iowa, met in _____ session, in the Board Room, Learning Resource Center, 2999 North 10th Street, Marion, Iowa, at 7:00 P.M., on the above date. There were present President _____, in the chair, and the following named Board Members:

Absent: _____

Vacant: _____

* * * * *

The President of the Board of Directors of the Linn-Mar Community School District (the "School District") announced that this is the time, place and date to hold a hearing on the Proposed Issuance of Approximately \$15,000,000 School Infrastructure Sales, Services and Use Tax Revenue Bonds. The following persons appeared:

(List the persons who appeared or attach the minutes of the hearing)

The President declared the hearing closed.

Director _____ introduced the following Resolution and moved its adoption. Director _____ seconded the motion to adopt. The roll was called, and the vote was:

AYES: _____

NAYS: _____

The President declared the Resolution adopted as follows:

**RESOLUTION SUPPORTING THE PROPOSED ISSUANCE OF
APPROXIMATELY \$15,000,000 SCHOOL INFRASTRUCTURE
SALES, SERVICES AND USE TAX REVENUE BONDS**

WHEREAS, the School District receives revenue from the State of Iowa Secure an Advanced Vision for Education Fund ("SAVE Revenue") pursuant to Iowa Code Section 423F.2; and

WHEREAS, pursuant to Iowa Code Chapter 423F and an election duly held in accordance therewith on November 5, 2019 approving a revenue purpose statement (the "Revenue Purpose Statement"), the Board of Directors is currently entitled to spend SAVE Revenue for school infrastructure purposes; and

WHEREAS, the Board of Directors is in need of funds for the following school infrastructure project: to complete construction of the Intermediate buildings, acquire land, complete renovations and improvements to the Elementary buildings, and security improvements at existing facilities, including costs of issuance and a debt service reserve fund if required by the purchaser; and

WHEREAS, the Board of Directors has deemed it necessary and advisable that the District issue School Infrastructure Sales, Services and Use Tax Revenue Bonds, which may be issued in one or more series over multiple fiscal years pursuant to Iowa Code Section 423F.2 and 423E.5, in the approximate amount of \$15,000,000 for the purpose of providing funds to complete construction of the Intermediate buildings, acquire land, complete renovations and improvements to the Elementary buildings, and security improvements at existing facilities, including costs of issuance and a debt service reserve fund if required by the purchaser. Any bond proceeds remaining after completion of this project will be used for other school infrastructure projects as authorized by the School District's Revenue Purpose Statement; and

WHEREAS, the Board of Directors has complied with the provisions of Iowa Code Section 423F.4 by providing notice and holding a public hearing on the proposal to issue such Bonds:

NOW, THEREFORE, it is resolved:

1. The Board of Directors supports the proposal to issue approximately \$15,000,000 School Infrastructure Sales, Services and Use Tax Revenue Bonds, which may be issued in one or more series over multiple fiscal years pursuant to Iowa Code Section 423F.2 and 423E.5, for the purpose of providing funds to complete construction of the Intermediate buildings, acquire land, complete renovations and improvements to the Elementary buildings, and security improvements at existing facilities, including costs of issuance and a debt service reserve fund if required by the purchaser. Any bond proceeds remaining after completion of this project will be used for other school infrastructure projects as authorized by the School District's Revenue Purpose Statement.

2. Eligible electors of the school district have the right to file with the Board Secretary a petition pursuant to Iowa Code Section 423F.4(2)(b), on or before close of business on March 23, 2020, for an election on the proposed bond issuance. The petition must be signed by eligible electors equal in number to not less than one hundred or thirty percent of those voting at the last preceding election of school officials under Iowa Code Section 277.1, whichever is greater.

3. In the event a petition containing the required number of valid signatures is filed with the Secretary of the Board on or before close of business on March 23, 2020, the President shall call a meeting of the Board to consider withdrawing the proposed Bond issuance, or directing that the question of the proposed Bond issuance be submitted to the qualified electors of the School District.

If the Board determines to submit the question to the electors, the proposition to be submitted shall be as follows:

Shall the Board of Directors of the Linn-Mar Community School District in the County of Linn, State of Iowa, be authorized to issue approximately \$15,000,000 School Infrastructure Sales, Services and Use Tax Revenue Bonds, which may be issued in one or more series over multiple fiscal years pursuant to Iowa Code Section 423F.2 and 423E.5, in the approximate amount of \$15,000,000 for the purpose of providing funds to complete

construction of the Intermediate buildings, acquire land, complete renovations and improvements to the Elementary buildings, and security improvements at existing facilities, including costs of issuance and a debt service reserve fund if required by the purchaser; with any bond proceeds remaining after completion of this project used for other school infrastructure projects as authorized by the School District's Revenue Purpose Statement?

PASSED AND APPROVED this 9th day of March, 2020.

President of the Board of Directors

ATTEST:

Secretary of the Board of Directors

CERTIFICATE

STATE OF IOWA

)

) SS

COUNTY OF LINN

)

I, the undersigned Secretary of the Board of Directors of the Linn-Mar Community School District, in the County of Linn, State of Iowa, do hereby certify that attached is a true and complete copy of the portion of the corporate records of the School District showing proceedings of the Board, and the same is a true and complete copy of the action taken by the Board with respect to the matter at the meeting held on the date indicated in the attachment, which proceedings remain in full force and effect, and have not been amended or rescinded in any way; that the meeting and all action was duly and publicly held in accordance with a notice of meeting and a tentative agenda, a copy of which was timely served on each member of the Board and posted on a bulletin board or other prominent place easily accessible to the public and clearly designated for that purpose at the principal office of the Board (a copy of the face sheet of the agenda being attached hereto) pursuant to the local rules of the Board and the provisions of Chapter 21, Code of Iowa, upon reasonable advance notice to the public and media at least twenty-four hours prior to the commencement of the meeting as required by law and with members of the public present in attendance; I further certify that the individuals named therein were on the date thereof duly and lawfully possessed of their respective offices as indicated therein, that no board vacancy existed except as may be stated in the proceedings, and that no controversy or litigation is pending, prayed or threatened involving the incorporation, organization, existence or boundaries of the School District or the right of the individuals named therein as officers to their respective positions.

WITNESS my hand this _____ day of _____, 2020.

Secretary of the Board of Directors of the
Linn-Mar Community School District

ITEMS TO INCLUDE ON AGENDA

LINN-MAR COMMUNITY SCHOOL DISTRICT

Instructional Support Levy

- Hearing on the Proposed Resolution
- Resolution to Continue Participation in the Instructional Support Program

NOTICE MUST BE GIVEN PURSUANT TO CHAPTER 21, CODE OF IOWA, AND THE LOCAL RULES OF THE SCHOOL DISTRICT.

March 9, 2020

The Board of Directors of the Linn-Mar Community School District, in the County of Linn, State of Iowa, met in _____ session, in the Board Room, Learning Resource Center, 2999 North 10th Street, Marion, Iowa, at 7:00 P.M., on the above date. There were present President _____, in the chair, and the following named Board Members:

Absent: _____

Vacant: _____

* * * * *

The President announced that this is the time, place and date to hold a hearing on the proposed Resolution to Consider Continued Participation in the Instructional Support Program. The following persons appeared:

(List the persons who appeared or attach the minutes of the hearing)

The President declared the hearing closed.

Director _____ introduced the following Resolution and moved its adoption. Director _____ seconded the motion to adopt. The roll was called, and the vote was:

AYES: _____

NAYS: _____

The President declared the Resolution adopted as follows:

RESOLUTION TO CONTINUE PARTICIPATION IN THE
INSTRUCTIONAL SUPPORT PROGRAM

WHEREAS, the Board of Directors has determined that to continue the current level of services and to fund the ongoing programs of the School District, continuation of participation in the Instructional Support Program for a period of five years is necessary and in the best interests of the District and its residents and students; and

WHEREAS, the Board of Directors has given consideration to continue participation in the Instructional Support Program as provided in Sections 257.18 through 257.21, Code of Iowa; and

WHEREAS, the Board has published notice of the time and place of a public hearing on the Resolution; and

WHEREAS, a hearing has been held upon the proposal to continue participation in the Instructional Support Program and any objections are overruled:

NOW, THEREFORE, IT IS RESOLVED:

1. The Board of Directors determines that it is consistent with the five year finance plan to fund the ongoing programs and services of the School District and it is in the best interest of the School District to continue participation in an Instructional Support Program as provided in Sections 257.18 through 257.21, Code of Iowa, and to provide additional funding therefor for a period of five (5) years commencing with the fiscal year ending June 30, 2022.

2. The additional funding for the Instructional Support Program for a budget year will be determined annually and will not exceed ten percent (10%) of the total regular program district cost for the budget year and moneys received under Section 257.14, Code of Iowa, as a budget adjustment for the budget year.

3. Moneys received by the District for the Instructional Support Program may be used for any general fund purpose.

4. The Instructional Support Program will be funded by instructional support state aid and an instructional support property tax levied annually upon the taxable property within the School District.

5. Unless, within twenty-eight days following the adoption of this Resolution, the Secretary of the Board receives a petition containing the signatures of eligible electors equal in number to not less than one hundred or thirty percent of the number of voters at the last preceding regular school election, whichever is greater, asking that an election be called to approve or disapprove this action of the Board adopting the Instructional Support Program, this action of the Board is final and the Secretary is authorized and directed to certify a copy of this Resolution to the Department of Management.

In the event a petition containing the required number of signatures is filed with the Secretary of the Board within twenty-eight days of the adoption of this Resolution, the President shall call a meeting of the Board to consider rescission of this Resolution, or to direct the county commissioner of elections to submit the following question to the qualified electors of the School District at a special election.

If the Board determines to submit the question to the electors, the proposition to be submitted shall be as follows:

Shall the Board of Directors of the Linn-Mar Community School District, in the County of Linn, State of Iowa, be authorized for a period of five (5) years to levy annually, as determined by the Board, an instructional support property tax in an amount (after taking into consideration instructional support state aid) not to exceed ten percent (10%) of the total of regular program district cost for the budget year and moneys received under Section 257.14, Code of Iowa, as a budget adjustment in the budget year, to be levied upon the taxable property within the School District, commencing with the levy for collection in the fiscal year ending June 30, 2022, to be used for any general fund purpose?

PASSED AND APPROVED this 9th day of March, 2020.

President of the Board of Directors

ATTEST:

Secretary of the Board of Directors

CERTIFICATE

STATE OF IOWA

)

) SS

COUNTY OF LINN

)

I, the undersigned Secretary of the Board of Directors of the Linn-Mar Community School District, in the County of Linn, State of Iowa, do hereby certify that attached is a true and complete copy of the portion of the corporate records of the School District showing proceedings of the Board, and the same is a true and complete copy of the action taken by the Board with respect to the matter at the meeting held on the date indicated in the attachment, which proceedings remain in full force and effect, and have not been amended or rescinded in any way; that the meeting and all action was duly and publicly held in accordance with a notice of meeting and a tentative agenda, a copy of which was timely served on each member of the Board and posted on a bulletin board or other prominent place easily accessible to the public and clearly designated for that purpose at the principal office of the Board pursuant to the local rules of the Board and the provisions of Chapter 21, Code of Iowa, upon reasonable advance notice to the public and media at least twenty-four hours prior to the commencement of the meeting as required by law and with members of the public present in attendance; I further certify that the individuals named therein were on the date thereof duly and lawfully possessed of their respective offices as indicated therein, that no board vacancy existed except as may be stated in the proceedings, and that no controversy or litigation is pending, prayed or threatened involving the incorporation, organization, existence or boundaries of the School District or the right of the individuals named therein as officers to their respective positions.

WITNESS my hand this day of , 2020.

Secretary of the Board of Directors of the
Linn-Mar Community School District

CERTIFICATE OF PARTICIPATION

I, _____, certify that the attached is a true and complete copy of the portion of the corporate records of the Linn-Mar Community School District showing the action of the Board to participate in the Instructional Support Program, that such proceedings remain in full force and effect and have not been amended or rescinded in any way, and that no petition requesting an election was filed within the twenty-eight day period following the Board action.

Dated this _____ day of _____, 2020.

Secretary of the Board of Directors of the Linn-Mar Community School District

ACKNOWLEDGEMENT OF FILING

I, _____, certify that on the _____ day of _____, 2020, there was filed in the office of the Department of Management a Resolution of the Board of Directors of the Linn-Mar Community School District, in the County of Linn, State of Iowa, adopted on March 9, 2020; the Resolution provides for Continued Participation in the Instructional Support Program as provided in Sections 257.18 through 257.21, Code of Iowa.

Dated this _____ day of _____, 2020.

State of Iowa, Department of Management

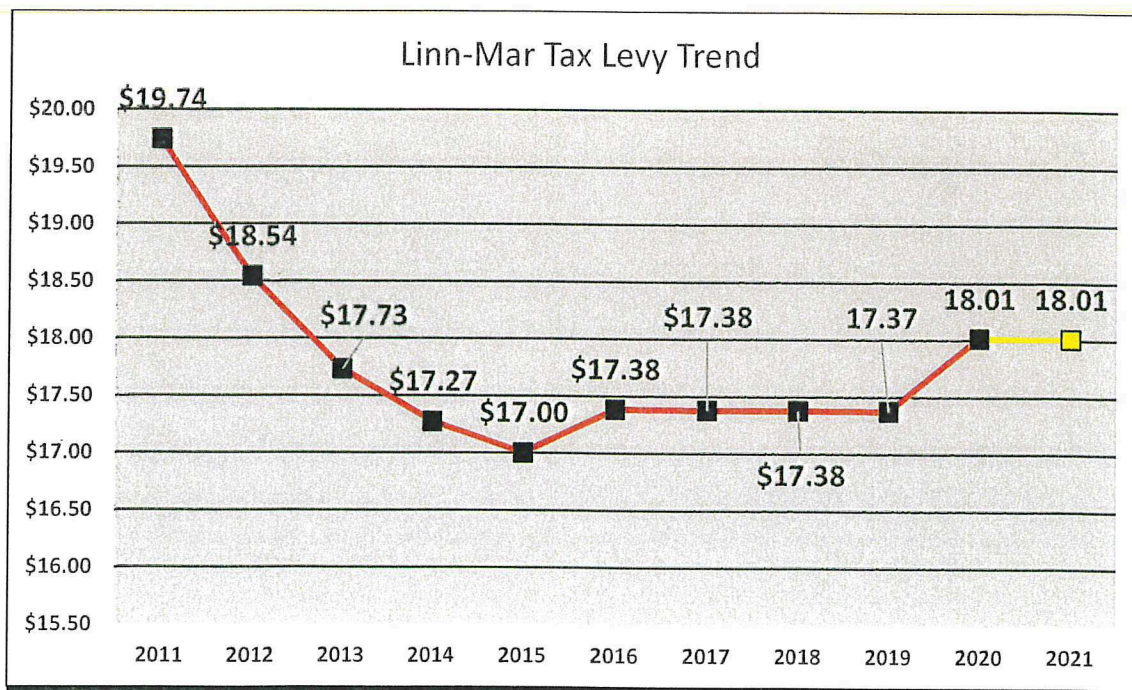
FY2021 LINN-MAR CERTIFIED BUDGET

TAX LEVY COMPARISON AND IMPACT

2.30% SSA Growth		
	FY2020	FY2021
General Fund	\$13.34617	\$13.51903
Management Levy	\$0.36405	\$0.34895
Voted PPEL	\$1.34000	\$1.34000
Regular PPEL	\$0.33000	\$0.33000
PERL	\$0.13500	\$0.13500
Debt Service	\$2.50000	\$2.33857
Total Levy	\$18.01522	\$18.01155
% Change		0%
\$ Change		(\$0.00367)

Impact of tax levy on a home assessed at \$200,000 is an annual decrease of approximately **\$67 (or \$5.58 per month)**. Such decrease is due to the state residential rollback decreasing 1.8%.

Impact of tax levy on commercial property assessed at \$500,000 is a negligible decrease (less than \$2 annually).



NOTICE OF PUBLIC HEARING
Proposed Linn-Mar School Budget Summary
Fiscal Year 2020-2021

Location of Public Hearing:

Date of Hearing: Time of Hearing:

Learning Resource Center Board Room

2999 North 10th Street

4/6/2020

7:00 p.m.

Marion, IA 52302

The Board of Directors will conduct a public hearing on the proposed 2020/21 school budget at the above-noted location and time. At the hearing, any resident or taxpayer may present objections to, or arguments in favor of, any part of the proposed budget. This notice represents a summary of the supporting detail of revenues and expenditures on file with the district secretary. A copy of the details will be furnished upon request.

		Budget 2021	Re-est. 2020	Actual 2019	Avg %19-21
Taxes Levied on Property	1	41,664,852	39,704,291	36,474,834	6.9%
Utility Replacement Excise Tax	2	190,493	186,321	170,617	5.7%
Income Surtaxes	3	0	0	0	New
Tuition/Transportation Received	4	5,650,000	5,500,000	5,298,763	
Earnings on Investments	5	507,000	735,000	477,940	
Nutrition Program Sales	6	2,300,000	2,275,000	2,263,741	
Student Activities and Sales	7	1,175,000	770,000	1,259,894	
Other Revenues from Local Sources	8	2,319,000	2,241,000	2,215,790	
Revenue from Intermediary Sources	9	0	0	0	
State Foundation Aid	10	52,323,938	49,648,096	47,671,727	
Instructional Support State Aid	11	267,919	0	0	
Other State Sources	12	8,351,400	8,124,400	7,955,232	
Commercial & Industrial State Replacement	13	1,299,180	1,061,716	1,034,904	
Title I Grants	14	600,000	600,000	627,241	
IDEA and Other Federal Sources	15	3,800,000	3,670,000	3,668,688	
Total Revenues	16	120,448,782	114,515,824	109,119,371	
General Long-Term Debt Proceeds	17	0	72,589,901	10,093,303	
Transfers In	18	7,300,000	21,276,457	6,280,499	
Proceeds of Fixed Asset Dispositions	19	25,000	25,000	55,820	
Special Items/Upward Adjustments	20	0	0	0	
Total Revenues & Other Sources	21	127,773,782	208,407,182	125,548,993	
Beginning Fund Balance	22	50,856,140	32,282,946	25,654,274	
Total Resources	23	178,629,922	240,690,128	151,203,267	
*Instruction	24	67,375,000	62,845,000	61,785,511	4.4%
Student Support Services	25	4,527,000	4,325,000	4,183,672	
Instructional Staff Support Services	26	6,708,500	6,307,500	6,137,836	
General Administration	27	1,003,000	902,000	838,694	
School Administration	28	4,915,000	4,512,000	4,357,354	
Business & Central Administration	29	2,284,000	2,198,000	2,132,900	
Plant Operation and Maintenance	30	7,875,000	7,145,000	6,866,139	
Student Transportation	31	3,750,000	3,165,000	3,049,862	
This row is intentionally left blank	32	0	0	0	
*Total Support Services (lines 25-32)	32A	31,062,500	28,554,500	27,566,457	6.2%
*Noninstructional Programs	33	4,657,000	4,225,000	4,025,680	7.6%
Facilities Acquisition and Construction	34	28,200,000	48,150,000	5,899,441	
Debt Service (Principal, interest, fiscal charges)	35	12,500,000	21,313,313	9,950,475	
AEA Support - Direct to AEA	36	3,784,045	3,469,718	3,339,090	
*Total Other Expenditures (lines 34-36)	36A	44,484,045	72,933,031	19,189,006	52.3%
Total Expenditures	37	147,578,545	168,557,531	112,566,654	
Transfers Out	38	7,295,000	21,276,457	6,353,667	
Other Uses	39	0	0	0	
Total Expenditures, Transfers Out & Other Uses	40	154,873,545	189,833,988	118,920,321	
Ending Fund Balance	41	23,756,377	50,856,140	32,282,946	
Total Requirements	42	178,629,922	240,690,128	151,203,267	

Proposed Property Tax Rate (per \$1,000 taxable valuation)

18.01155

ADOPTION OF BUDGET AND TAXES
JULY 1, 2020-JUNE 30, 2021

Department of Management - Form S-TX

Linn-Mar

District Number **3715**

Total Special Program Funding

Instructional Support (A&L line 10.27)	3,974,243
Educational Improvement (A&L line 11.3)	0
Voted Physical Plant & Equipment (A&L line 19.3)	3,207,528

Special Program Income Surtax Rates

Instructional Support (A&L line 10.15)	0
Educational Improvement (A&L line 11.4)	0
Voted Physical Plant & Equipment (A&L line 19.4)	0

Utility Replacement and Property Taxes Adopted

		Utility Replacement AND Property Tax Dollars	Levy Rate	Property Taxes Levied	Estimated Utility Replacement Dollars
Levy to Fund Combined District Cost (A&L line 15.3)	1	21,287,113			
+Educational Improvement Levy (A&L line 15.5)	2	0			
+Cash Reserve Levy - SBRC (A&L line 15.9)	3	4,732,034			
+Cash Reserve Levy - Other (A&L line 15.10)	4	1,425,000			
-Use of Fund Balance to Reduce Levy (A&L line 15.11)	5	0			
=Subtotal General Fund Levy (A&L line 15.14)	6	27,444,147	11.97065	27,317,632	126,515
+Instructional Support Levy (A&L line 15.13)	7	3,706,324	1.54838	3,689,959	16,365
=Total General Fund Levy (A&L line 15.12)	8	31,150,471	13.51903	31,007,591	142,880
	9				
Management	10	800,000	.34895	796,322	3,678
Amana Library	11	0	.00000	0	0
Voted Physical Plant & Equipment (Loan Agreement)	12	1,223,600			
+Voted Physical Plant & Equipment (Capital Project)	13	1,983,928			
=Subtotal Voted Physical Plant & Equipment	14	3,207,528	1.34000	3,193,367	14,161
+Regular Physical Plant & Equipment	15	789,914	.33000	786,426	3,488
=Total Physical Plant & Equipment	16	3,997,442			
	17				
Reorganization Equalization Levy	18	0	.00000	0	0
Emergency Levy (for Disaster Recovery)	19	0	.00000	0	0
Public Education/Recreation (Playground)	20	309,642	.13500	308,077	1,565
Debt Service	21	5,597,790	2.33857	5,573,069	24,721
GRAND TOTAL	22	41,855,345	18.01155	41,664,852	190,493

1-1-19 Taxable Valuation WITH Gas & Electric Utilities

2,292,618,786

WITHOUT Gas&Elec

2,282,050,858

1-1-19 Tax Increment Valuation WITH Gas & Electric Utilities

101,058,846

WITHOUT Gas&Elec

101,058,846

1-1-19 Debt Service, PPEL, ISL Valuation WITH Gas & Electric Utilities

2,393,677,632

WITHOUT Gas&Elec

2,383,109,704

I certify this budget is in compliance with the following statements:

- ☐ The prescribed Notice of Public Hearing and Proposed Budget Summary (Form S-PB) was lawfully published, with said publication being evidenced by verified and filed proof of publication.
- ☐ The budget hearing notice was published not less than 10 days, nor more than 20 days, prior to the budget hearing.
- ☐ Adopted property taxes do not exceed published amounts.
- ☐ Adopted expenditures do not exceed published amounts for any of the four individual expenditure categories, or in total.
- ☐ Adopted property taxes meet the debt service and loan agreement needs identified on Form 703. Debt service levy for GO bond payments only.
- ☐ This budget was certified on or before April 15, 2020.

Date Budget Adopted: _____

_____ District Secretary

_____ County Auditor

Memorandum

To: Linn-Mar Board of Education, Shannon Bisgard, Superintendent
From: Jeff Gustason, Principal *J.M. G.*
Date: 3/2/2020
Re: Early Graduation

The following students have applied for early graduation at the end of 3rd Quarter in March, 2020:

Nathaniel Cole	(COMPASS)
Catie Dunmoyer	(COMPASS)
Isaac Pingel	
Kaliegh Reynolds	(COMPASS)
Adam Seastrand	(COMPASS)
Elysia Severson	(COMPASS)
Megan Wittenburg	(COMPASS)

These students have a post-secondary education plan in place that has been developed with the Linn-Mar High School counseling and COMPASS staffs. These students are on track to meet or exceed Linn-Mar's requirements for graduation by the end of this 3rd Quarter.

I recommend the approval of these requests pending the successful completion of current course work.