



AIA Document G701® – 2017

Change Order

PROJECT: <i>(Name and address)</i> 22210000 Linn-Mar Administration Building 3556 Winslow Road Marion, IA 52302	CONTRACT INFORMATION: Contract For: New Linn-Mar Administration Building Date: June 5, 2023	CHANGE ORDER INFORMATION: Change Order Number: 006 Date: March 8, 2024
OWNER: <i>(Name and address)</i> Linn-Mar Community School District 2999 North Tenth Street Marion, IA 52302	ARCHITECT: <i>(Name and address)</i> OPN Architects 200 5th Ave. SE, Suite 201 Cedar Rapids, IA 52401	CONTRACTOR: <i>(Name and address)</i> Peak Construction Group 660 Liberty Way, Unit C North Liberty, IA 52317

THE CONTRACT IS CHANGED AS FOLLOWS:

(Insert a detailed description of the change and, if applicable, attach or reference specific exhibits. Also include agreed upon adjustments attributable to executed Construction Change Directives.)

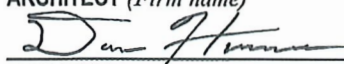
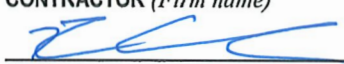
COR 013.2 - ITC 013 FFE Power and Data Revisions	\$4,309.50
COR 014.1 - ITC 015 Acoustical Partitions	\$16,715.95
Total	\$21,025.45

The original Contract Sum was	\$ 11,774,000.00
The net change by previously authorized Change Orders	\$ -203,397.99
The Contract Sum prior to this Change Order was	\$ 11,570,602.01
The Contract Sum will be increased by this Change Order in the amount of	\$ 21,025.45
The new Contract Sum including this Change Order will be	\$ 11,591,627.46

The Contract Time will be unchanged by Zero (0) days.
The new date of Substantial Completion will be

NOTE: This Change Order does not include adjustments to the Contract Sum or Guaranteed Maximum Price, or the Contract Time, that have been authorized by Construction Change Directive until the cost and time have been agreed upon by both the Owner and Contractor, in which case a Change Order is executed to supersede the Construction Change Directive.

NOT VALID UNTIL SIGNED BY THE ARCHITECT, CONTRACTOR AND OWNER.

OPN Architects	Peak Constuction Group	Linn-Mar Community School District
ARCHITECT <i>(Firm name)</i>	CONTRACTOR <i>(Firm name)</i>	OWNER <i>(Firm name)</i>
		
SIGNATURE	SIGNATURE	SIGNATURE
Dan Hammes, CA	Kris Chyko, President	Barry Bucholz, Board President
PRINTED NAME AND TITLE	PRINTED NAME AND TITLE	PRINTED NAME AND TITLE
3/8/24	03/11/2024	
DATE	DATE	DATE

Change Order Summary 3.8.24

New Linn-Mar Admin Building

COR Number	Title	RFI/ITC	AMOUNT	Description
13.3	Costs associated with ITC 013 - FFE power and data revisions	ITC 013	\$ 4,309.50	Power and data revisions to align with furniture, fixtures, and equipment layout.
14.1	Costs associated with ITC 015 - Acoustical Partitions	ITC 015	\$ 16,715.95	Providing acoustical partitions to deck and sound sealant.

Total: \$ 21,025.45

023-014

Project:

Linn-Mar Administration Building

Date:

2/21/2024

COR # 013 rev. 2

To:

OPN Architects

From:

Peak Construction Group

Attn:

Dan Hammes

Description:

Costs associated with ITC 013

CONTRACTOR/VENDOR INFO	Amount
Peak Material	\$0.00
Peak Equipment	\$0.00
Peak Labor	\$0.00
Hawkeye Electric	\$4,037.27

Notes:

Subtotal	\$4,037.27
Peak OHP (10%)	\$0.00
Subcontractors OHP (5%)	\$201.86
Bond	\$70.37
Total	\$4,309.50



Hawkeye Electric Change Order

Project: **Linn Mar Admin**

Tracking #: **ITC #13**

Date: **1.24.24**

Description: **Make Changes to the power and data rough in per ITC**

General: **Peak Attn: Steve/Ethan**

	Material Quantity	Unit Cost	Material Total	Labor Hours
	1		\$0.00	
	0	\$0.00	\$0.00	
	0	\$0.00	\$0.00	
	0	\$0.00	\$0.00	0.00
	1	\$0.00	\$0.00	0.00
Large Office 1003B	1	\$0.00	\$0.00	
Relocate AB-4	1	\$28.00	\$28.00	
Labor	1	\$0.00	\$0.00	2.30
Large Office 1006A	1	\$0.00	\$0.00	
Relocate AB-4	1	\$28.00	\$28.00	2.30
Move DD 3'	1	\$14.00	\$14.00	1.50
Open Office 1010	1	\$0.00	\$0.00	
Delete DD	1		\$0.00	1.00
Add Furnitue Feed	1	\$95	\$95.00	1.50
Large Office 1010B	1		\$0.00	
Relocate AB-4	1	28	\$28.00	
Labor	1		\$0.00	2.30
Large Office 1010C	1		\$0.00	
Relocate AB-4	1	28	\$28.00	
Labor	1		\$0.00	2.30
Large Office 1010D	1		\$0.00	
Relocate AB-4	1	28	\$28.00	2.30
Labor	1		\$0.00	
Large Office 1011E	1		\$0.00	
Relocate AB-4	1	28	\$28.00	
Labor	1		\$0.00	2.30
Office 1029A	1	28	\$28.00	
Relocate AB-4	1		\$0.00	
Labor	1		\$0.00	2.30
Tri City Cabling	1	1384.18	\$1,384.18	
			\$0.00	
			\$0.00	
			\$1,689.18	20.10

Material: \$1,689.18

Tax: \$0.00

Foreman Labor: \$2,155.84

Journeyman Labor: \$0.00

Apprentice Labor: \$0.00

OH/Profit: \$192.25

Sub-cont: \$0.00

OH/Profit: \$0.00

Total: \$4,037.27

Hours x Rate

25.10	\$ 85.89
0.00	\$ 80.76
0.00	\$ 72.38

Materials Labor Hrs

A signed copy of this change order must be returned to Hawkeye Electric before any work will be performed. Please return within 5 days of receipt or additional charges may apply due to job progress.

INSTRUCTION TO CONTRACTOR – ITC NO. 013R

Date: February 09, 2024
Project: Linn-Mar Administration Building
Project Number: 22210000
Client: Linn-Mar Community School District
General Contractor: Peak Construction Group

*If, in your opinion, this instruction involves work that either increases or decreases the Contract Sum or Contract Time, you **shall not proceed** until you submit a Change Authorization Request and receive signed authorization to proceed. Proceeding with the Work prior to authorization indicates your acknowledgement that there will be no change in the Contract Sum or Contract Time.*

The following Instruction to Contractor is issued to:

- ☒ Clarify drawings, specifications, and/or material selection.
- ☐ Request an estimate for Owner's further consideration.
- ☒ Transmit drawings or documents for incorporation into the work, subject to the above statement.

Initiated By: Owner

Description: Power and Data Revisions associated with the latest FFE plans approved by the Owner. Verification of scope of work with edits from the initial ITC 013 that went out as a request for an estimate for Owner's consideration - the changes originally included for offices 1001B and 1001C in ITC 013 have been removed from ITC 013R.

Action Required:

1. E211: ELECTRICAL POWER PLAN – Refer to Reissued Sheet.
 - i. Large Office 1003B:
 1. REVISE location of AB-4 on the plan east wall further plan north to align with updated FFE plans.
 2. REVISE the duplex receptacle on the plan west wall to be a double duplex.
 3. REVISE the double duplex receptacle on the plan south wall to be a single duplex.
 - ii. Large Office 1006A:
 1. REVISE location of AB-4 to the plan north wall to align with updated FFE plans.
 2. REVISE the duplex receptacle on the plan south wall to be a double duplex. Shift device rough-in approximately 3' plan west.
 3. REVISE the double duplex receptacle on the plan north wall to be a single duplex.
 - iii. Open Office 1010:
 1. DELETE the quantity two (2) double duplex receptacles on the plan north and plan east walls, respectively.
 2. ADD a furniture feed power connection on the plan north wall, adjacent to the door sidelight. Circuit to LD-73.
 - iv. Large Office 1010B:
 1. REVISE location of AB-4 to the plan north wall to align with updated FFE plans.
 2. REVISE the duplex receptacle on the plan south wall to be a double duplex.
 3. REVISE the double duplex receptacle on the plan west wall to be a single duplex.
 - v. Large Office 1010C:
 1. REVISE location of AB-4 to the plan north wall to align with updated FFE plans.
 2. REVISE the duplex receptacle on the plan south wall to be a double duplex.
 3. REVISE the double duplex receptacle on the plan east wall to be a single duplex.

- vi. Large Office 1010D:
 - 1. REVISE location of AB-4 to the plan north wall to align with updated FFE plans.
 - vii. Large Office 1011E:
 - 1. REVISE location of AB-4 on the plan west wall further plan north to align with updated FFE plans.
 - 2. REVISE the duplex receptacle on the plan east wall to be a double duplex.
 - 3. REVISE the double duplex receptacle on the plan north wall to be a single duplex.
 - viii. Large Office 1029A:
 - 1. REVISE location of AB-4 to the plan west wall in lieu of plan north wall.
 - 2. REVISE the duplex receptacle on the plan north wall to be a double duplex.
 - 3. REVISE the double duplex receptacle on the plan south wall to be a single duplex.
2. T111: TECHNOLOGY PLAN – Refer to Reissued Sheet.
- i. Large Office 1003B:
 - 1. REVISE location of wall activation box data on the plan east wall further plan north to align with revised activation box location.
 - 2. REVISE the two data drops shown on the plan south wall to instead be on the plan west wall adjacent to the duplex receptacle being revised to a double duplex receptacle.
 - ii. Large Office 1006A:
 - 1. REVISE location of wall activation box data to the plan north wall to align with revised activation box location.
 - 2. REVISE the two data drops shown on the plan north wall to instead be on the plan south wall adjacent to the duplex receptacle being revised to a double duplex receptacle. REVISE quantity of drops to three (3) in lieu of two (2).
 - 3. REVISE the three data drops shown on the plan west wall to quantity two (2) drops.
 - iii. Large Office 1010:
 - 1. ADD a furniture feed data connection on the plan north wall, adjacent to the door sidelight. For clarification, the quantity four data drops in Open Office 1010 shall be routed through the furniture feed in lieu of directly terminated at the wall. Refer to the updated furniture plan.
 - iv. Large Office 1010B:
 - 1. REVISE location of wall activation box data to the plan north wall to align with revised activation box location.
 - 2. REVISE the two data drops shown on the plan west wall to instead be on the plan south wall adjacent to the duplex receptacle being revised to a double duplex receptacle.
 - v. Large Office 1010C:
 - 1. REVISE location of wall activation box data to the plan north wall to align with revised activation box location.
 - 2. REVISE the two data drops shown on the plan east wall to instead be on the plan south wall adjacent to the duplex receptacle being revised to a double duplex receptacle.
 - vi. Large Office 1010D:
 - 1. REVISE location of wall activation box data to the plan north wall to align with revised activation box location.
 - 2. REVISE the three data drops shown on plan north side of the plan east wall to instead be two (2) data drops.
 - 3. REVISE the two data drops shown on the plan south side of the plan east wall to instead be quantity three (3) drops.
 - vii. Large Office 1011E:
 - 1. REVISE location of wall activation box data on the plan west wall further plan north to align with revised activation box location.
 - 2. REVISE the three data drops shown on the plan south wall to instead be two (2) data drops.
 - 3. REVISE the two data drops shown on the plan north wall to instead be quantity three (3) drops on the plan east wall adjacent to the duplex receptacle being revised to a double duplex receptacle.

- viii. Large Office 1029A:
 - 1. REVISE location of wall activation box data to the plan west wall in lieu of plan north wall to align with revised activation box location.
 - 2. REVISE the two data drops shown on the plan south wall to instead be on the plan north wall adjacent to the duplex receptacle being revised to a double duplex receptacle.
- 3. TA111: AUDIO VISUAL PLAN – Refer to Reissued Sheet.
 - i. Large Office 1003B:
 - 1. REVISE location of LED-1, MNT-W, HRX-1 wall devices on the plan east wall further plan north to align with revised activation box location.
 - 2. REVISE location of HTX-1 device to the plan west wall to be adjacent to the duplex receptacle being revised to a double duplex receptacle.
 - ii. Large Office 1006A:
 - 1. REVISE location of LED-1, MNT-W, HRX-1 wall devices to the plan north wall further to align with revised activation box location.
 - 2. REVISE location of HTX-1 device to the plan south wall to be adjacent to the duplex receptacle being revised to a double duplex receptacle.
 - iii. Large Office 1010B:
 - 1. REVISE location of LED-1, MNT-W, HRX-1 wall devices to the plan north wall to align with revised activation box location.
 - 2. REVISE location of HTX-1 device to the plan south wall to be adjacent to the duplex receptacle being revised to a double duplex receptacle.
 - iv. Large Office 1010C:
 - 1. REVISE location of LED-1, MNT-W, HRX-1 wall devices to the plan north wall to align with revised activation box location.
 - 2. REVISE location of HTX-1 device to the plan south wall to be adjacent to the duplex receptacle being revised to a double duplex receptacle.
 - v. Large Office 1010D:
 - 1. REVISE location of LED-1, MNT-W, HRX-1 wall devices to the plan north wall to align with revised activation box location.
 - 2. REVISE location of HTX-1 device to the south end of the plan east wall. Device shall be adjacent to the southern double duplex receptacle on the east wall.
 - vi. Large Office 1011E:
 - 1. REVISE location of LED-1, MNT-W, HRX-1 wall devices on the plan west wall further plan north to align with revised activation box location.
 - 2. REVISE location of HTX-1 device to the plan east wall to be adjacent to the duplex receptacle being revised to a double duplex receptacle.
 - vii. Large Office 1029A:
 - 1. REVISE location of LED-1, MNT-W, HRX-1 devices to the plan west wall in lieu of plan north wall to align with revised activation box location.
 - 2. REVISE location of HTX-1 device by shifting approximately 9' plan east to be adjacent to the duplex receptacle being revised to a double duplex receptacle.

Associated RFIs:

None

Attachments:

E211, T111, TA111

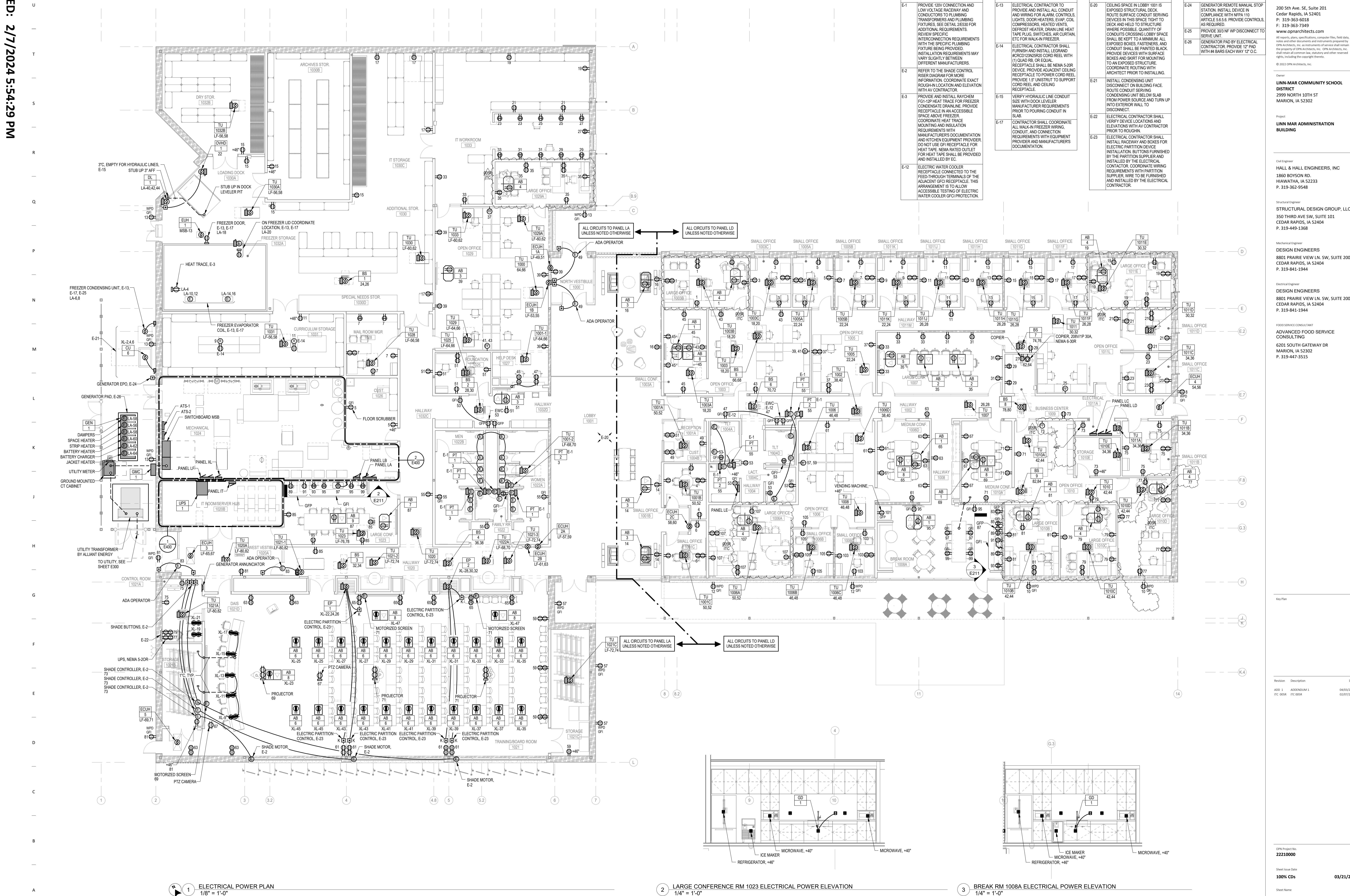
Issued By: TMK - DE

KEYED NOTES	
E-1	PROVIDE 120V CONNECTION AND LOW VOLTAGE RACEWAY AND CONDUIT TO PLUMBING TRANSFORMERS AND PLUMBING FIXTURES. SEE DETAIL 2E530 FOR ADDITIONAL REQUIREMENTS. REVIEW SPECIFIC INTERCONNECTION REQUIREMENTS WITH THE SPECIFIC PLUMBING FIXTURE BEING PROVIDED. INSTALLATION REQUIREMENTS MAY VARY SLIGHTLY BETWEEN DIFFERENT MANUFACTURERS.
E-2	REFER TO THE SHADE CONTROL RISER DIAGRAM FOR MORE INFORMATION. COORDINATE EXACT ROUGH-IN LOCATION AND ELEVATION WITH AV CONTRACTOR.
E-3	PROVIDE AND INSTALL RAYCHEM FG-12P HEAT TRACE FOR FREEZER CONDENSATE DRAINLINE. PROVIDE RECEPTACLE IN AN ACCESSIBLE SPACE ABOVE FREEZER. COORDINATE HEAT TRACE MOUNTING AND INSULATION REQUIREMENTS WITH MANUFACTURER'S DOCUMENTATION AND KITCHEN EQUIPMENT PROVIDER. DO NOT USE GFI RECEPTACLE FOR HEAT TRACE NEMA RATED OUTLET FOR HEAT TRACE SHALL BE PROVIDED AND INSTALLED BY EC.
E-12	ELECTRIC WATER COOLER RECEPTACLE CONNECTED TO THE FEED-THROUGH TERMINALS OF THE ADJACENT GFI RECEPTACLE. THIS ARRANGEMENT IS TO ALLOW ACCESSIBLE TESTING OF ELECTRIC WATER COOLER GFI/GFCI PROTECTION.

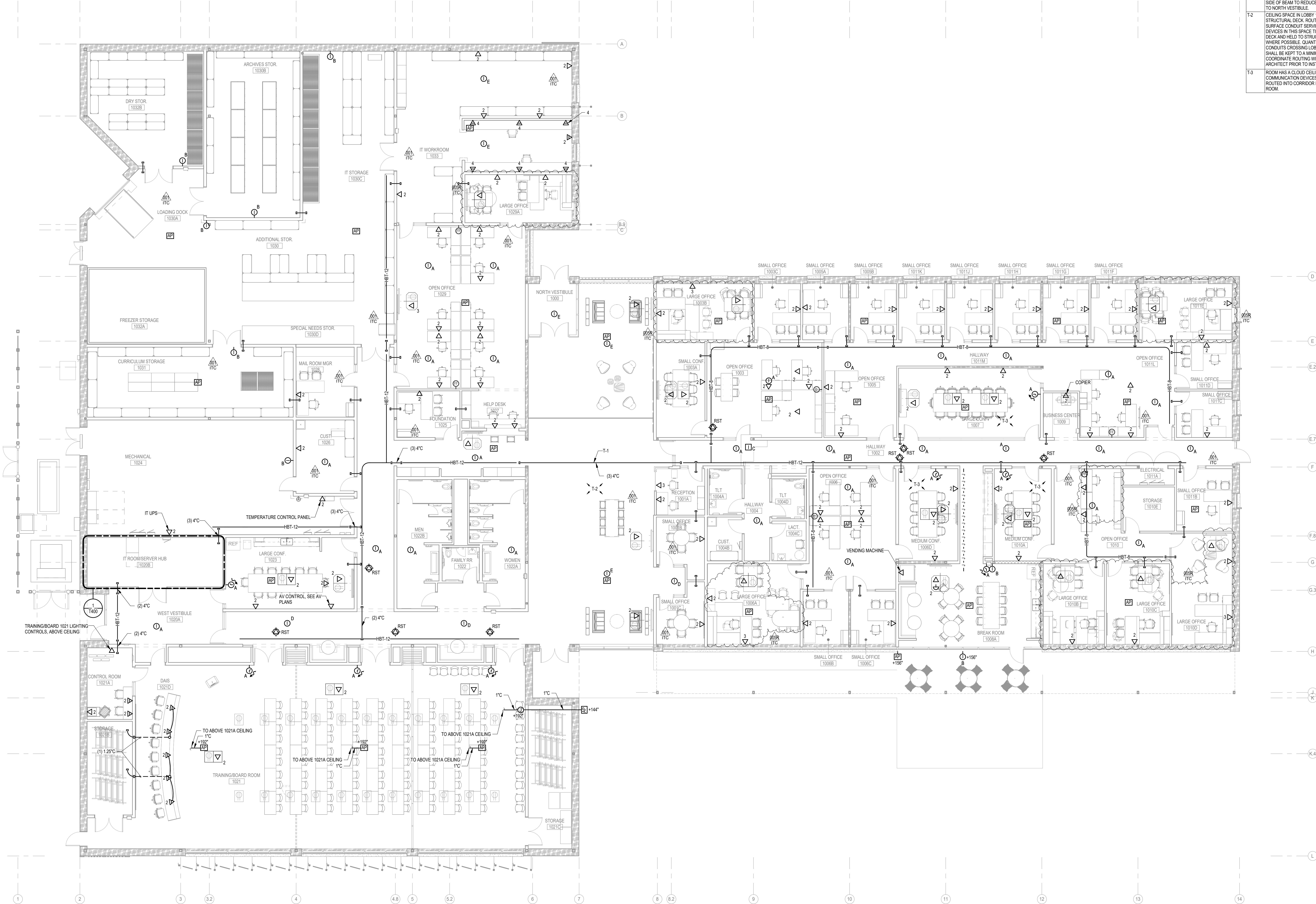
KEYED NOTES	
E-13	ELECTRICAL CONTRACTOR TO PROVIDE AND INSTALL ALL CONDUIT AND WIRING FOR ALARM CONTROLS, LIGHTS, DOOR HEATERS, EVAP. COIL COMPRESSORS, HEATED VENTS, DESHOWER HEATER, DRAIN LINE HEAT TAPE PLUG, SWITCHES, AIR CURTAIN, ETC FOR WALK-IN FREEZER.
E-14	ELECTRICAL CONTRACTOR SHALL FURNISH AND INSTALL LEGRAND #RCRD12M2S2R20 CORD REEL WITH (1) QUAD RE. OR EQUAL. RECEPTACLE SHALL BE NEMA 5-20R DEVICE. PROVIDE ADJACENT CEILING RECEPTACLE TO POWER CORD REEL. PROVIDE 1/2" UNISTRUT TO SUPPORT CORD REEL AND CEILING RECEPTACLE.
E-15	VERIFY HYDRALINE LINE CONDUIT SIZE WITH DOCK LEVELER MANUFACTURER REQUIREMENTS PRIOR TO POURING CONDUIT IN SLAB.
E-17	CONTRACTOR SHALL COORDINATE ALL WALK-IN FREEZER WIRING, CONDUIT, AND CONNECTION REQUIREMENTS WITH EQUIPMENT PROVIDER AND MANUFACTURER'S DOCUMENTATION.

KEYED NOTES	
E-20	CEILING SPACE IN LOBBY 1001 IS EXPOSED STRUCTURAL DECK. ROUTE SURFACE CONDUIT SERVING DEVICES IN THIS SPACE TIGHT TO DECK AND HELD TO STRUCTURE WHERE POSSIBLE. QUANTITY OF CONDUITS CROSSING LOBBY SPACE SHALL BE KEPT TO A MINIMUM. ALL EXPOSED BOXES, FASTENERS, AND CONDUIT SHALL BE PAINTED BLACK. PROVIDE DEVICES WITH SURFACE BOXES AND SHORT FOR MOUNTING TO AN EXPOSED STRUCTURE. COORDINATE ROUTING WITH ARCHITECT PRIOR TO INSTALLING.
E-21	INSTALL CONDENSING UNIT DISCONNECT ON BUILDING FACE. ROUTE CONDUIT SERVING CONDENSING UNIT BELOW SLAB FROM POWER SOURCE AND TURN UP INTO EXTERIOR WALL TO DISCONNECT.
E-22	ELECTRICAL CONTRACTOR SHALL VERIFY DEVICE LOCATIONS AND ELEVATIONS WITH AV CONTRACTOR PRIOR TO ROUGH-IN.
E-23	ELECTRICAL CONTRACTOR SHALL INSTALL RACEWAY AND BOXES FOR ELECTRIC PARTITION DEVICE INSTALLATION. BUTTONS FURNISHED BY THE PARTITION SUPPLIER AND INSTALLED BY THE ELECTRICAL CONTRACTOR. COORDINATE WIRING REQUIREMENTS WITH PARTITION SUPPLIER. WIRE TO BE FURNISHED AND INSTALLED BY THE ELECTRICAL CONTRACTOR.

KEYED NOTES	
E-24	GENERATOR REMOTE MANUAL STOP STATION. INSTALL DEVICE IN COMPLIANCE WITH NFPA 70 ARTICLE 5.6.5.6. PROVIDE CONTROLS, AS REQUIRED.
E-25	PROVIDE 303 NF WP DISCONNECT TO SERVE UNIT.
E-26	GENERATOR PAD BY ELECTRICAL CONTRACTOR. PROVIDE 12" PAD WITH #4 BARS EACH WAY 12" O.C.



KEYED NOTES	
T-1	ROUTE CONDUITS ON PLAN SOUTH SIDE OF BEAM TO REDUCE VISIBILITY TO NORTH VESTIBULE
T-2	CEILING SPACE IN LOBBY 1001 IS STRUCTURAL DECK. ROUTE SURFACE CONDUIT SERVING DEVICES IN THIS SPACE TIGHT TO DECK AND HELD TO STRUCTURE WHERE POSSIBLE. QUANTITY OF CONDUITS CROSSING LOBBY SPACE SHALL BE KEPT TO A MINIMUM. COORDINATE ROUTING WITH ARCHITECT PRIOR TO INSTALLING.
T-3	ROOM HAS A CLOUD CEILING. ALL COMMUNICATION DEVICES SHALL BE ROUTED INTO CORRIDOR IN LIEU OF ROOM.



1 TECHNOLOGY PLAN
1/8" = 1'-0"

ALL CONDUIT SLEEVES ARE 2" UNO

023-014

Project:

Linn-Mar Administration Building

Date:

2/28/2024

COR # 014 rev 1

To:

OPN Architects

From:

Peak Construction Group

Attn:

Dan Hammes

Description:

Costs associated with ITC 015

CONTRACTOR/VENDOR INFO

Amount

Option #1:

Young's Painting

\$10,400.00

Precision Drywall

\$5,260.00

Peak OHP (5%)

\$783.00

Bond

\$272.95

TOTAL

\$16,715.95

Notes:

PRICE REQUEST



To: Peak Construction

Project: Linn Mar Administration

Date: 2/28/24

Office Phone: 319-334-4786

Contact Name: Andrew Young

Contact Phone Number: 319-327-6966

Proposal:

Option #1

Pricing for ITC-015 in regards to RFI 031

Price for adding spraying of USG Acoustical sealant to seal tops of framed walls to decking.

Does not include stuffing void with insulation, Precision is said to be doing this

Labor = \$6,500 Materials = \$3,900

Total = \$10,400

Phone: (319) 363-5616
Fax: (319) 363-6112



1011 2nd Ave. SW Suite 200
Cedar Rapids, IA 52404

BID PROPOSAL

Option #1

Prepared For: Peak Construction Group
Contact: Steve Oyen / Ashley Roeder

Project: Linn-Mar Administration Building,
Marion, IA
COR #003- ITC#15 – Acoustical
Partitions (Kinzler)

Date: 2/27/23

COR#003: Extra cost for material and labor related to ITC #015 and includes the following, see below:

- Material and Labor Breakdown Description:
 - o Mineral Wool Batting – 3" SAFB 24"x48" – installed in top of walls that run left to right, shown with batting on the RCP plan

*** Price does not include any spray. Price is to stuff flutes only ***

Kinzler Proposal: \$5,010.00

OHP- 5%: \$250.00

Materials and Labor for the Sum of: ADD- \$5,260.00
(Five Thousand, Two Hundred and Sixty Dollars)

Notes:

- Due to the fluctuating steel prices, quote is subject to change if not accepted within 30 days.
- Topping out of gypsum board to happen before MEP installation, where applicable.
- Temperature and Humidity will need to be within the gypsum manufacturers standards before hanging and finishing of gypsum board will proceed. Building conditions is by others.

STANDARD EXCLUSIONS:

Expansion Joints Material and Labor
Dust Partitions / Temporary Walls
Spray Foam Insulation
Insulation of any kind unless stated above
Wood Framing / Construction
Demolition
Acoustical Ceilings
Dumpsters
Setting and Grouting HM Frames

Framing / Structure at Caseworks
Prefinished Break Metal at Stud Walls
Caulking of any kind
Painting
Plywood / OSB
Fire Caulking
Weekend / Premium Time
Fry Reglet (Other than Above)
Permits and Fees

Wall Labeling / Stenciling (Painter)
Level 5 Finish (Unable to Locate)
Foam Board
Acoustical Caulking
Backing & Blocking
Fireproofing / Firesafing
Bonding
Engineering / Shops (Other than above)

We do not provide heating, weather protection, fans, dehumidifiers, electricity, water, or lights.
We are not responsible for the clean-up of other trades. We are not responsible for damage to project by any other contractors. Owner's items in work area are sole responsibility of owner for theft or damage.
This proposal is good for 30 days, subject to change after 30 days for labor or material price changes.

PREPARED BY: Will Clark

ACCEPTED BY: _____

TITLE: Project Manager / Estimator

TITLE: _____

DATE: 2/27/2024

DATE: _____



INSTRUCTION TO CONTRACTOR – ITC NO. 015

Date: January 29, 2024
Project: Linn-Mar Administration Building
Project Number: 22210000
Client: Linn-Mar Community School District
General Contractor: Peak Construction Group

*If, in your opinion, this instruction involves work that either increases or decreases the Contract Sum or Contract Time, you **shall not proceed** until you submit a Change Authorization Request and receive signed authorization to proceed. Proceeding with the Work prior to authorization indicates your acknowledgement that there will be no change in the Contract Sum or Contract Time.*

The following Instruction to Contractor is issued to:

- ☒ Clarify drawings, specifications, and/or material selection.
- ☒ Request an estimate for Owner's further consideration.
- ☒ Transmit drawings or documents for incorporation into the work, subject to the above statement.

INITIATED BY: Peak, OPN

DESCRIPTION: RFI 031 – Acoustical Partitions

GENERAL INFORMATION:

DRAWINGS

ARCHITECTURAL DRAWINGS

1. Sheet A701 – REFLECTED CEILING PLAN
 - a. REISSUED full sheet to reflect acoustical partitions.

Associated RFIs: RFI 31

Attachments:

- Architectural Sheets: A701

Issued By: Dan Hammes/OPN

END OF ITC NO. 015

GENERAL NOTES

- CEILING-MOUNTED FIXTURES, SPRINKLERS AND EQUIPMENT SHALL BE CENTERED IN CEILING PANELS OR GYPSUM BOARD SOFFITS AND EQUALLY SPACED UNLESS NOTED OTHERWISE.
- CENTER CEILING GRID IN ROOMS AS SHOWN UNLESS NOTED OTHERWISE.
- CONCEALED SPRINKLER HEAD COVERS SHALL BE PAINTED BY MANUFACTURER TO MATCH ADJACENT SOFFIT/ACP UNLESS NOTED OTHERWISE.
- COORDINATE LOCATIONS OF EXIT LIGHTS AND EMERGENCY LIGHTS SHOWN ON ARCHITECTURAL DRAWINGS. IN THE EVENT OF A DISCREPANCY, VERIFY WITH ARCHITECT PRIOR TO INSTALLATION.
- CEILING FIXTURE DIMENSIONS ARE TAKEN FROM CENTERLINE OF FIXTURE UNLESS NOTED OTHERWISE.
- REFER TO ARCHITECTURAL DRAWINGS (ELEVATIONS & REFLECTED CEILING PLANS) FOR ALL MECHANICAL AND ELECTRICAL DEVICE AND FIXTURE LOCATIONS & MOUNTING HEIGHTS. IF NOT CLEARLY SPECIFIED, CONTACT ARCHITECT FOR FURTHER CLARIFICATION. MECHANICAL & ELECTRICAL DRAWINGS ARE FOR FIXTURE TYPES ONLY.
- PAINT ALL EXPOSED STRUCTURE, DECK, DUCTWORK, CONDUIT, ETC. IN AREAS NOTED TO BE OPEN TO STRUCTURE UNLESS NOTED OTHERWISE. PAINTING OF EXPOSED STRUCTURE TO BE DONE AFTER ALL UTILITIES ARE INSTALLED.
- CONTRACTOR TO VERIFY CONDUIT AND PIPE ROUTING AT STRUCTURAL WOOD DECK WITH ARCHITECT. ROUT TIGHT TO STRUCTURE. PAINT PT-4 PRIOR TO INSTALLATION AND PROTECT EXPOSED WOOD DECK FROM ANY OVERSPRAY OR TOUCH UP PAINT.
- ALL WALLS SHOWN WITH BATT INSULATION INDICATE ACOUSTICAL PARTITIONS. SEAL ALL WALL PENETRATIONS IN ADDITION TO ACOUSTICAL PARTITION WALL TYPE REQUIREMENTS, UNO.

CEILING LEGEND

- ACCESS PANEL
- ARCHITECTURAL TROFFER
- LENSED 2X2 TROFFER
- RECTANGULAR FIXTURE
- LINEAR FIXTURE
- DOWN LIGHTS
- LINEAR PENDANT
- DOWN LIGHT PENDANTS
- UTILITY LIGHTS
- CEILING & WALL MOUNT EXIT SIGNS
- HVAC SUPPLY DIFFUSER
- HVAC RETURN DIFFUSER
- HVAC EXHAUST DIFFUSER
- HVAC SLOT DIFFUSER
- HVAC ROUND DIFFUSER
- PROJECTOR
- PROJECTOR SCREEN
- OCCUPANCY SENSOR
- SPEAKER
- MICROPHONE
- WIRELESS ACCESS POINT
- CEILING & WALL MOUNT CLOCK
- SMOKE DETECTOR
- CEILING & WALL MOUNT CAMERA
- DATA & POWER
- SPRINKLER
- SIDE WALL SPRINKLER
- GRAY FILL INDICATES EXTENTS OF AREAS ABOVE CEILING TO BE PAINTED

KEYNOTE LEGEND

- 09 00K ACOUSTICAL SEALANT NOT REQUIRED AT THE TOP OF THIS WALL.
- 26 51 B1 SUSPENDED LIGHT FIXTURES - SEE ELECTRICAL.
- 27 40 A1 REFER TO AV DRAWINGS FOR MOTORIZED SCREEN AND PROJECTOR INFORMATION.

BOTTOM OF FIXTURE 10'-1" AFF
BOTTOM OF FIXTURE 8'-1" AFF
BOTTOM OF FIXTURE 10'-1" AFF
BOTTOM OF FIXTURE 9'-9" AFF
BOTTOM OF FIXTURE 10'-1" AFF
BOTTOM OF FIXTURE 8'-7" AFF
BOTTOM OF FIXTURE 8'-7" AFF
BOTTOM OF FIXTURE 10'-7" AFF
BOTTOM OF FIXTURE 8'-1" AFF
BOTTOM OF FIXTURE 9'-1" AFF

BOTTOM OF FIXTURE 10'-8" AFF
BOTTOM OF FIXTURE 9'-9" AFF
BOTTOM OF FIXTURE 10'-1" AFF
BOTTOM OF FIXTURE 8'-7" AFF
BOTTOM OF FIXTURE 8'-1" AFF
BOTTOM OF FIXTURE 10'-1" AFF

2 ENLARGED CEILING PLAN - NORTH PENDANT LIGHTS
1/4" = 1'-0"

BOTTOM OF FIXTURE 9'-1" AFF
BOTTOM OF FIXTURE 10'-1" AFF
BOTTOM OF FIXTURE 8'-7" AFF
BOTTOM OF FIXTURE 8'-7" AFF
BOTTOM OF FIXTURE 8'-1" AFF
BOTTOM OF FIXTURE 9'-1" AFF

BOTTOM OF FIXTURE 10'-1" AFF
BOTTOM OF FIXTURE 10'-7" AFF
BOTTOM OF FIXTURE 10'-1" AFF
BOTTOM OF FIXTURE 8'-1" AFF
BOTTOM OF FIXTURE 10'-1" AFF
BOTTOM OF FIXTURE 10'-7" AFF
BOTTOM OF FIXTURE 8'-1" AFF
BOTTOM OF FIXTURE 10'-1" AFF

3 ENLARGED CEILING PLAN - SOUTH PENDANT LIGHTS
1/4" = 1'-0"

1/4" REVEAL LOCATION
EXPOSED STEEL ROOF JOIST - REFER TO STRUCTURAL
4'-0" OFFSET AT ALTERNATING BAFFLES
6" X 96" X 3/8" RECTANGULAR BAFFLES WITH 1/4" REVEALS, TYP. V.I.F. AND FIELD CUT END BAFFLES.
SUSPENDED LIGHT FIXTURES - REFER TO ELECTRICAL

1/4" GAP
7'-11 3/4" BAFFLE
1/4" GAP
4'-0" TYP.

4 ENLARGED RCP - TYP. ACB PATTERN
1/4" = 1'-0"

1 LEVEL 1 RCP
1/8" = 1'-0"