



Date: November 20, 2025

Page 1 of 1

To: Andy Parke - Linn-Mar CSD

Project: **LMCSD Indian Creek Elementary  
School ADA Improvements**

Re: COR #1

Rathje #: 7597

Andy,

I am hereby submitting the following change order request to cover core out and geogrid in paved areas as recommended by Brent Jackman following a proof-roll on 11/20/2025.

Description	Qty	Unit	Unit Price	MU	Unit w/ MU	Total
12" Core out area (west)	3.13	CY	\$80.00	0.00%	\$80.00	\$250.40
3" Core out area	6.90	CY	\$80.00	0.00%	\$80.00	\$552.00
12" Core out area (east)	96.30	CY	\$80.00	0.00%	\$80.00	\$7,704.00
Geogrid beneath subbase	855.00	SY	\$2.75	0.00%	\$2.75	\$2,351.25
						<b>\$10,857.65</b>

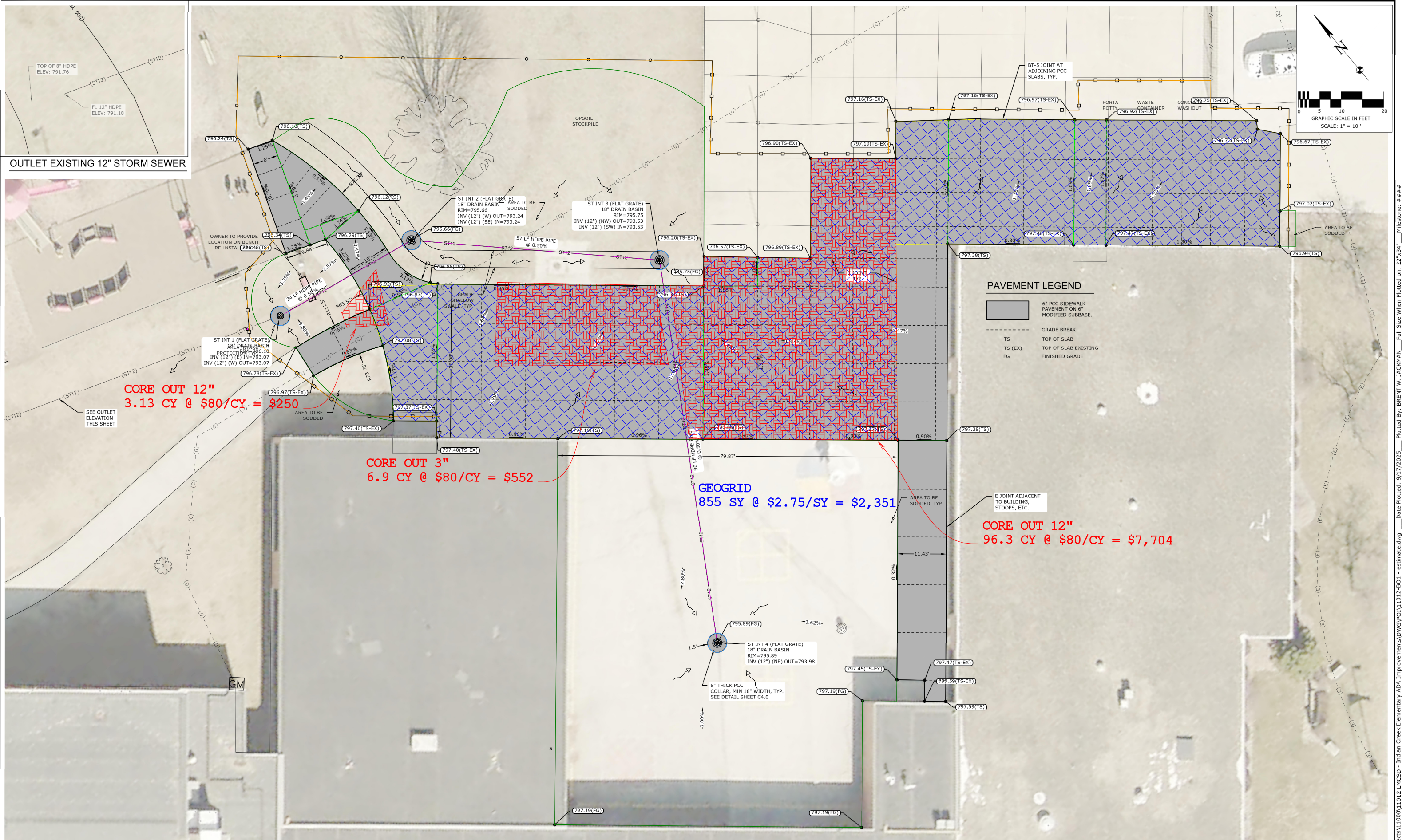
Please call if you have any questions.

Respectfully,

Darren Fry 319-360-1587

Approved by: Katie Lowe Lancaster  
LMCSD Board President

Date: \_\_\_\_\_



DRAWN BY:	DAS				
CHECKED BY:	BWJ				
APPROVED BY:	BWJ	9/16/25	ADDENDUM #2		
DATE:	08/05/2025	9/16/25	ADDENDUM #1	9/16/2025	9/16/2025
FIELD BOOK:	NO.		REVISION DESCRIPTION	APPROVED	DATE



HALL & HALL ENGINEERS, INC.  
Leaders in Land Development Since 1953  
1860 Boyson Rd.  
Haworth, IA 52233  
(319) 362-1846  
www.halleng.com

- CIVIL ENGINEERING
- LAND SURVEYING
- LANDSCAPE ARCHITECTURE
- LAND DEVELOPMENT PLANNING

LMCS INDIAN CREEK ELEMENTARY  
SCHOOL ADA IMPROVEMENTS  
IN THE CITY OF MARION, LINN COUNTY, IOWA

SITE LAYOUT, UTILITY AND  
ELEVATION PLAN

PROJECT NO: 11012

SHEET  
C2.0